



Member of the Iraq Stock Exchange

EST. 1995

December 2012

RS - Iraq Stock Exchange (ISX) Monthly Report

Rabee Securities (**RS**)

*Website: **RS.IQ***

*Bloomberg page: <**RS.IQ**>*

ISX - Performance

	End of Dec.'12	Chn (m/m)	Chn (y/y)
CBI Auction Price of Iraqi Dinar (IQD)	1166	-	-0.3%
RSISX Closing (IQD)	1615	-1%	7%
Mcap of ISX (IQD bn)	5,970	-1%	23%
Mcap of ISX (\$ mn)	4,975	-1%	20%

	Dec.'12	Chn (m/m)	Chn (y/y)
Trading Vol (IQD bn)	105	-10%	73%
Trading Vol (\$ mn)	88	-10%	68%
Traded Shares (bn)	74	-35%	172%
Number of Transactions ('000)	15	33%	48%
Foreigners' Share in Trading Vol. (%)	5.4%	0.9ppt	-21.4ppt

	2012	Chn (y/y)
Trading Vol (IQD bn)	894	-5%
Trading Vol (\$ mn)	750	-7%
Traded Shares (bn)	626	27%
Number of Transactions ('000)	136	3%
Foreigners' Share in Trading Vol. (%)	6.1%	-5.8ppt

	End of Nov.'12	End of Dec.'12
Number of Listed Companies	84	84

No. of Companies Suspended from Trading due to

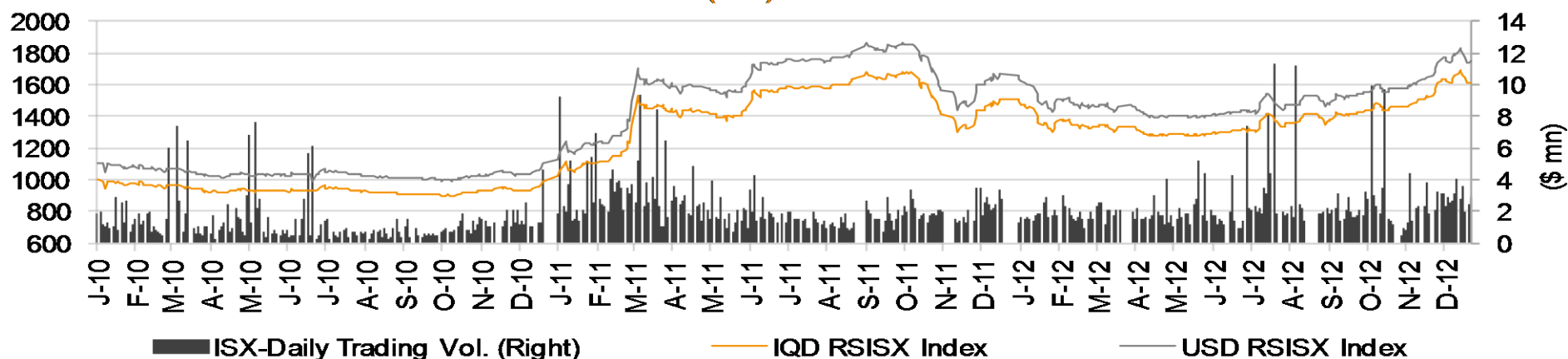
	End of Nov.'12	End of Dec.'12
General Assembly	6	3
ISC	11	10
Total Number of Suspended Comp.	17	13
Number of Tradable Companies	67	71

	Nov.'12 (m/m)	Dec'12 (m/m)
Number of Companies (Price Up)	38	37
Number of Companies (Price Down)	21	20

Source: RS, ISX

RSISX Index

Rabee Securities (RS) Index - RSISX Index

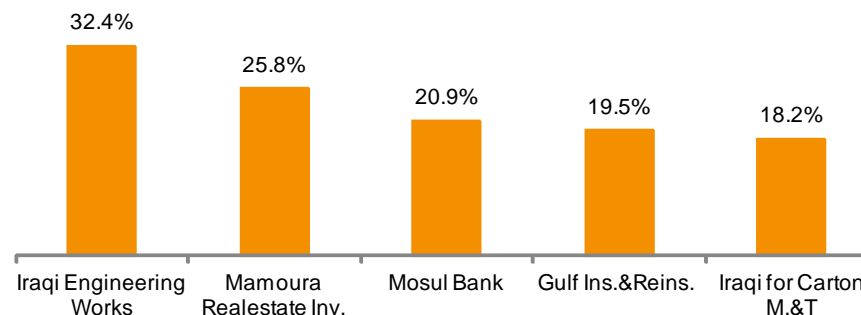


Source: RS, ISX

Top Five (December, 2012)

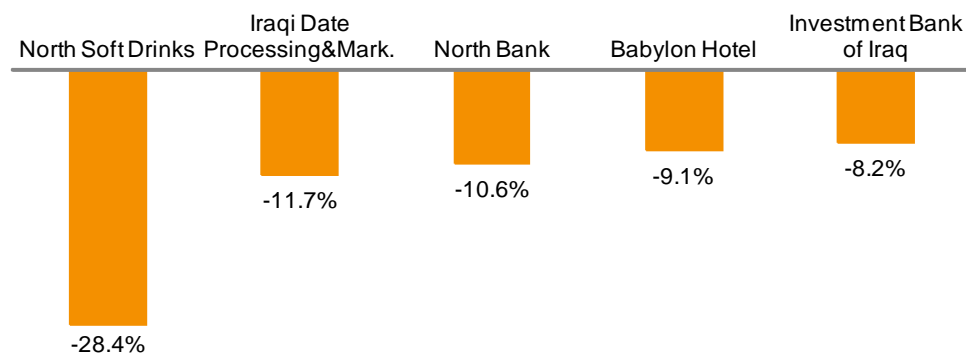
Best Performers

	ISX Code	Closing Price (IQD)*	% Chg. (m/m)
Iraqi Engineering Works	IIEW	2.45	32.4%
Mamoura Realestate Inv.	SMRI	3.85	25.8%
Mosul Bank	BMFI	0.85	20.9%
Gulf Insurance&Reinsurance	NGIR	0.92	19.5%
Iraqi for Carton Manufact. and Trading	IICM	0.91	18.2%



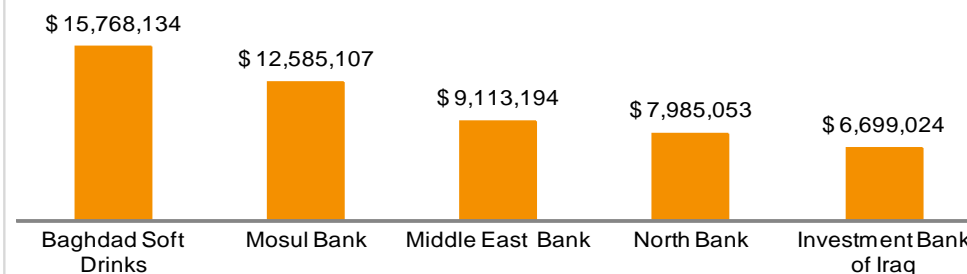
Worst Performers

	ISX Code	Closing Price (IQD)*	% Chg. (m/m)
North Soft Drinks	INSD	0.49	-28.4%
Iraqi Date Processing&Mark.	IIDP	1.28	-11.7%
North Bank	BNOR	2.54	-10.6%
Babylon Hotel	HBAY	27.50	-9.1%
Investment Bank of Iraq	BIBI	1.01	-8.2%



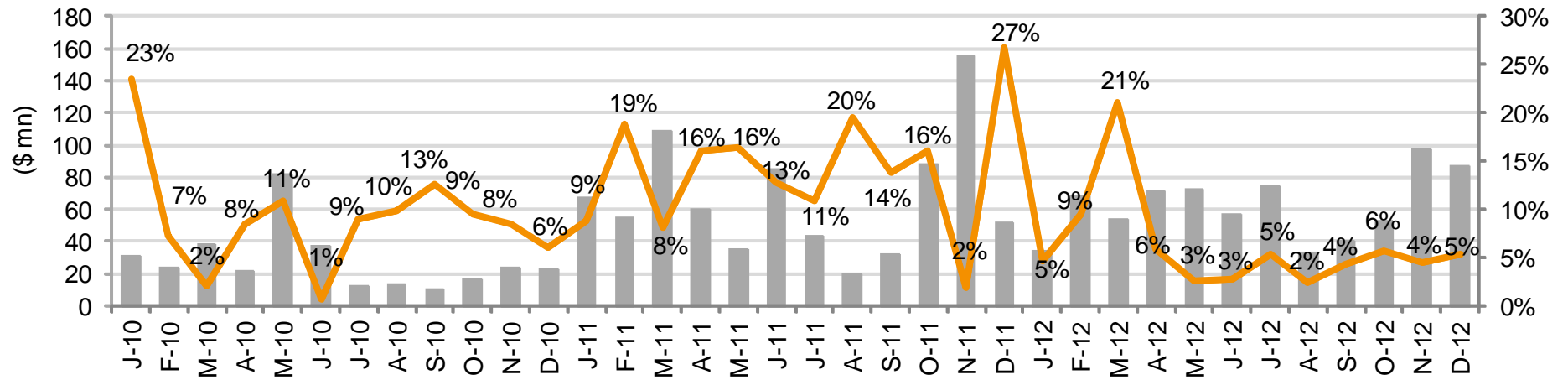
Top 5 Trading Volume

	ISX Code	Trading Vol. (\$)/m	Share in total T. Volume
Baghdad Soft Drinks	IBSD	15,768,134	18.0%
Mosul Bank	BMFI	12,585,107	14.3%
Middle East Bank	BIME	9,113,194	10.4%
North Bank	BNOR	7,985,053	9.1%
Investment Bank of Iraq	BIBI	6,699,024	7.6%

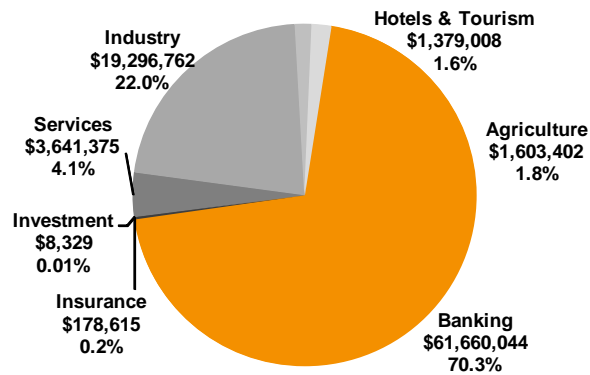


*As of 25/12/2012.

ISX - Total Monthly Trading Volume (\$ mn) & Foreigners' Share in Total Trading Vol. (%)

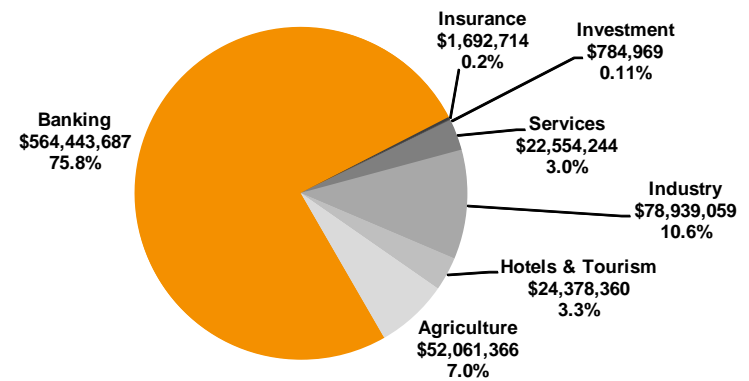


Breakdown of December 2012 Trading Volume



Source: RS, ISX

Breakdown of 2012 Trading Volume



Source: RS, ISX

Recent Corporate Actions (October - December)

Company Name	ISX Code	Suspended from Trading	Resumed Trading*	New Shares Resumed Trading	Rights issue	Bonus issue	Paid-in Capital BEFORE the increase	Paid-in Capital AFTER the increase**	Current Paid-in Capital	Cash dividend ratio
					(%)	(%)	(IQD bn)	(IQD bn)	(IQD bn)	(%)
Al-Ahlyia for Agricultural Prod.***	AAHP	09.10.2012	08.11.2012	-	-	-	-	-	0.58	-
Iraqi Agricultural Prod. Mark. Meat***	AIPM	03.10.2012	04.11.2012	-	-	-	-	-	4.13	-
Modern for Animal Production***	AMAP	11.10.2012	23.10.2012	-	100%	-	1.80	3.60	3.60	-
Ashur International Bank***	BASH	18.06.2012	05.07.2012	23.12.2012	43%	7.3%	100.00	150.00	150.00	-
Babylon Bank***	BBAY	21.11.2012	09.12.2012	-	45%	5%	100.00	150.00	150.00	-
Commercial Bank of Iraq	BCOI	17.10.2012	-	-	50%	-	100.00	150.00	100.00	7.5%
Economy Bank***	BEFI	13.09.2012	08.10.2012	-	41%	9%	100.00	150.00	150.00	-
Middle East Bank***	BIME	23.04.2012	01.07.2012	10.10.2012	-	-	-	-	150.00	-
Kurdistan Int. Bank***	BKUI	13.08.2012	06.09.2012	23.12.2012	100%	-	150.00	300.00	300.00	-
Mosul Bank***	BMFI	05.08.2012	04.12.2012	04.12.2012	52%	50.0%	100.00	202.00	202.00	-
United Bank***	BUND	08.04.2012	01.07.2012	14.11.2012	-	-	-	-	250.00	-
Karbala Hotels***	HKAR	09.12.2012	23.12.2012	-	208%	-	1.62	5.00	5.00	-
Al-Sadeer Hotel***	HSAD	14.11.2012	02.12.2012	-	-	-	-	-	1.24	-
Baghdad for Packing Materials	IBPM	20.12.2012	-	-	100%	-	0.54	1.08	1.08	-
Fallujah for Construction Mat.***	IFCM	05.06.2012	01.07.2012	23.12.2012	-	5%	2.16	2.27	2.27	-
Iraqi Engineering Works***	IIEW	24.09.2012	08.10.2012	-	20%	30.0%	1.00	1.50	1.50	-
Al-Mansour Pharma. Ind.***	IMAP	07.10.2012	21.10.2012	-	100%	-	3.23	6.47	6.47	-
Metallic Ind. and Bicycles***	IMIB	11.12.2012	24.12.2012	-	50%	-	5.00	7.50	7.50	-
National Chemical Industries***	INCP	18.11.2012	29.11.2012	-	-	-	-	-	15.19	-
North Soft Drinks***	INSD	15.07.2012	24.12.2012	24.12.2012	30%	-	31.88	41.44	41.44	-
Ready Made Clothes***	IRMC	13.08.2012	04.09.2012	14.11.2012	-	-	-	-	1.50	-
AHliya For Insurance***	NAHF	18.10.2012	07.11.2012	-	-	-	-	-	2.50	-
Al-Hamraa for Insurance***	NHAM	12.11.2012	28.11.2012	-	-	50%	2.00	3.00	3.00	-
Baghdad Al-Iraq for Gen. Transport.***	SBPT	06.11.2012	06.12.2012	-	-	25.0%	0.16	0.20	0.20	-
AL-Nukhba for Construction***	SNUC	30.09.2012	14.10.2012	-	-	-	-	-	2.00	-
Al-Khaima Financial Inv.***	VKHA	10.10.2012	20.11.2012	-	-	15.0%	0.40	0.46	0.46	-
Al-Zawraa for Financial Inv.	VZAF	12.07.2012	31.07.2012	23.12.2012	-	15%	1.00	1.15	1.15	-

Source: RS, ISX

*If there is a capital increase, this date shows the date when original shares resumed trading.

**Paid-in Capital AFTER the increase shows the capital the company reached / will reach after the completion of the capital increase processes.

***When the original shares resume trading, we start using the number of shares that the company will reach after the capital increase with the assumption that the capital increase was reflected to the price of the shares.

ISX Companies which are not trading due to General Assembly Meetings*

Company Name	ISX Code	Suspended from Trading	GA Date	Rights issue (%)	Bonus issue (%)	Paid-in Capital BEFORE the increase (IQD bn)	Paid-in Capital AFTER the increase (IQD bn)
Banking Sector							
Dijlah & Furat Bank	BDFD	19.05.2011	12.04.2012	200.0%	-	100.0	300.0
Commercial Bank of Iraq	BCOI	17.10.2012	24.10.2012	50.0%	-	100.0	150.0
Industry Sector							
Baghdad for Packing Materials	IBPM	20.12.2012	27.12.2012	100.0%	-	0.5	1.1

As of 25/12/2012

Source: RS, ISX

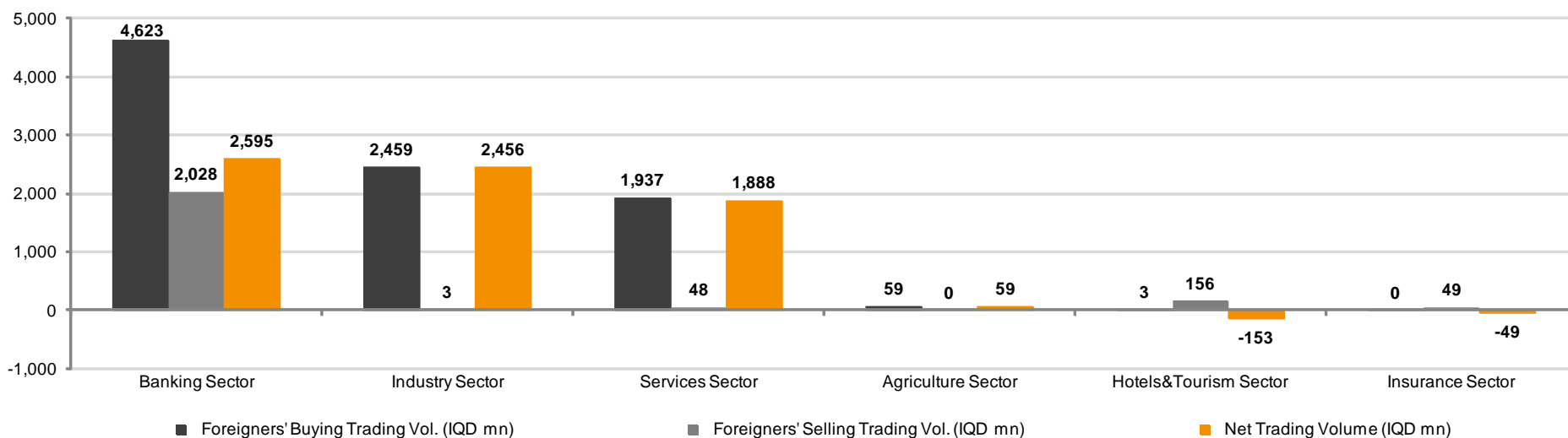
ISX Companies which are not trading due to Iraqi Securities Commission's (ISC) Decision*

Company Name / Sector Name	ISX Code	Suspended from Trading	Company Name / Sector Name	ISX Code	Suspended from Trading
Industry Sector			Services Sector		
Electronic Industries	IELI	05.08.2012	Baghdad Motor Cars Servicing	SBMC	05.08.2012
Al-Hilal Industries	IHLI	05.08.2012	Iraqi for General Transp.	SIGT	05.08.2012
Modern Paint Industries	IMPI	05.08.2012	Hotels&Tourism Sector		
Nineveh Food Industries	INFI	09.08.2011	Palestine Hotel	HPAL	09.08.2011
The Light Industries	ITLI	05.08.2012	Agriculture Sector		
			Iraqi for Seed Production	AISP	04.11.2012
			Investment Sector		
			Al-Kheir Financial Investment	VKHF	03.10.2012

*As of 25/12/2012

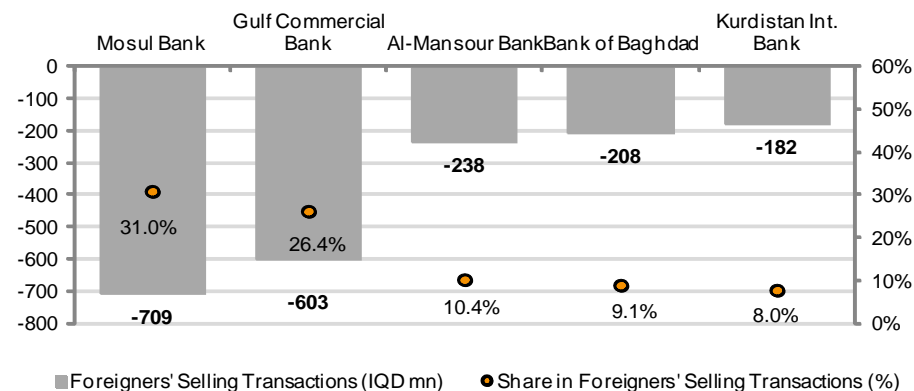
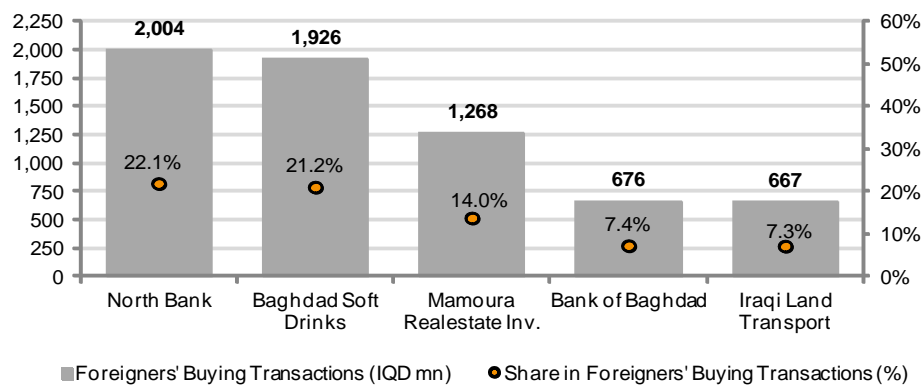
Source: RS, ISX

Foreigners' Transactions (December, 2012)



Source: RS, ISX

Top Five Companies according to Foreigners' Buying and Selling Transactions - December, 2012



Foreigners' Buying Transactions - December, 2012

Company Name	ISX Code	No. of Trans	No. of Traded Shares	Trading Volume (IQD)	Trading Volume (\$)
Banking Sector					
Ashur International Bank	BASH	2	400,000	384,000	320
Babylon Bank	BBAY	1	200,000	158,000	132
Bank of Baghdad	BBOB	131	360,019,589	675,512,757	562,927
Dar Es Salaam Inv. Bank	BDSI	8	1,117,880	3,460,160	2,883
Economy Bank	BEFI	44	83,416,848	94,296,227	78,580
Gulf Commercial Bank	BGUC	41	264,418,605	288,155,043	240,129
Investment Bank of Iraq	BIBI	12	3,551,757	3,867,641	3,223
Iraqi Islamic Bank	BIIB	4	14,295,262	16,467,930	13,723
Middle East Bank	BIME	140	372,133,279	528,078,411	440,065
Kurdistan Int. Bank	BKUI	79	256,250,424	548,991,237	457,493
Mosul Bank	BMFI	14	31,000,000	28,984,000	24,153
Al-Mansour Bank	BMNS	1	200,000	242,000	202
National Bank of Iraq	BNOI	1	58,800	48,804	41
North Bank	BNOR	155	724,640,222	2,003,985,624	1,669,988
Credit Bank of Iraq	BROI	38	28,410,000	63,147,000	52,623
Sumer Commercial Bank	BSUC	20	35,827,360	36,665,432	30,555
United Bank	BUND	27	93,504,922	179,181,499	149,318
Union Bank	BUOI	91	142,672,284	151,259,405	126,050
TOTAL		809	2,412,117,232	4,622,885,171	3,852,404
Insurance Sector					
Dar Al-Salam for Insurance	NDSA	1	30,800	67,760	56
TOTAL		1	30,800	67,760	56
Services Sector					
AL-Badia for General Trans	SBAG	4	400,000	1,992,000	1,660
Iraqi Land Transport	SILT	193	126,585,442	666,585,977	555,488
Mamoura Realstate Inv.	SMRI	124	397,648,680	1,268,008,656	1,056,674
TOTAL		321	524,634,122	1,936,586,632	1,613,822
Industry Sector					
Baghdad Soft Drinks	IBSD	617	1,313,442,921	1,926,492,523	1,605,410
Fallujah for Construction Mat.	IFCM	65	36,473,076	206,044,498	171,704
Iraqi Date Processing&Mark.	IIDP	17	27,652,030	40,027,338	33,356
Iraqi Engineering Works	IIEW	3	382,000	929,500	775
AL- Kindi of Veterinary Vac.	IKLV	86	73,651,013	280,989,844	234,158
Al-Mansour Pharma. Ind.	IMAP	3	400,000	512,000	427
Modern Sewing	IMOS	1	200,000	710,000	592
National Chemical Industries	INCP	7	3,200,000	3,246,400	2,705
TOTAL		799	1,455,401,040	2,458,952,103	2,049,127
Hotels&Tourism Sector					
Ashour Hotel	HASH	3	17,200	176,240	147
Ishtar Hotels	HISH	5	35,450	992,600	827
Karbala Hotels	HKAR	1	200,000	1,010,000	842
National for Tourist Invest.	HNTI	1	50,794	1,000,642	834
TOTAL		10	303,444	3,179,482	2,650
Agriculture Sector					
Iraqi Agricultural Prod. Mark. Meat	AIPM	15	6,681,752	59,339,993	49,450
TOTAL		15	6,681,752	59,339,993	49,450
GRAND TOTAL		1955	4,399,168,390	9,081,011,141	7,567,509

Source: RS, ISX

Foreigners' Selling Transactions - December, 2012

Company Name	ISX Code	No. of Trans	No. of Traded Shares	Trading Volume (IQD)	Trading Volume (\$)
Banking Sector					
Ashur International Bank	BASH	1	100,000	96,000	80
Babylon Bank	BBAY	1	1,330,000	1,064,000	887
Bank of Baghdad	BBOB	45	94,551,904	208,331,250	173,609
Dar Es Salaam Inv. Bank	BDSI	4	680,000	2,110,100	1,758
Economy Bank	BEFI	1	100,000	113,000	94
Gulf Commercial Bank	BGUC	89	556,942,515	602,878,151	502,398
Investment Bank of Iraq	BIBI	2	200,000	212,000	177
Iraqi Islamic Bank	BIIB	1	7,000	8,400	7
Middle East Bank	BIME	9	57,068,543	82,678,488	68,899
Kurdistan Int. Bank	BKUI	20	84,570,000	181,819,800	151,517
Mosul Bank	BMFI	45	775,771,051	708,949,787	590,791
Al-Mansour Bank	BMNS	42	193,180,892	238,204,998	198,504
Credit Bank of Iraq	BROI	3	703,000	1,621,050	1,351
Union Bank	BUOI	1	4,178	4,345	4
TOTAL		264	1,765,209,083	2,028,091,369	1,690,076
Insurance Sector					
Dar Al-Salam for Insurance	NDSA	14	23,139,533	48,842,606	40,702
TOTAL		14	23,139,533	48,842,606	40,702
Services Sector					
Al-Ameen Estate Inv.	SAEI	1	120,000	349,200	291
Baghdad Al-Iraq for Gen. Transport.	SBPT	1	174	7,673	6
Iraqi Land Transport	SILT	1	35,000	178,500	149
Mamoura Realstate Inv.	SMRI	13	14,802,500	47,228,050	39,357
AL-Nukhba for Construction	SNUC	1	400,000	648,000	540
TOTAL		17	15,357,674	48,411,423	40,343
Industry Sector					
Baghdad Soft Drinks	IBSD	2	81,579	120,620	101
Fallujah for Construction Mat.	IFCM	3	300,000	1,364,000	1,137
AL- Kindi of Veterinary Vac.	IKLV	1	300,000	1,125,000	938
National Chemical Industries	INCP	1	200,000	190,000	158
Ready Made Clothes	IRMC	1	44,443	311,101	259
TOTAL		8	926,022	3,110,721	2,592
Hotels&Tourism Sector					
Babylon Hotel	HBAY	8	860,000	24,440,000	20,367
Ishtar Hotels	HISH	5	4,471,663	125,206,564	104,339
Al- Mansour Hotel	HMAN	3	64,290	2,298,578	1,915
National for Tourist Invest.	HNTI	2	200,000	3,900,000	3,250
Al-Sadeer Hotel	HSAD	1	350	5,985	5
TOTAL		19	5,596,303	155,851,127	129,876
Agriculture Sector					
Iraqi Agricultural Prod. Mark. Meat	AIPM	1	1,000	8,900	7
TOTAL		1	1,000	8,900	7
GRAND TOTAL		323	1,810,229,615	2,284,316,146	1,903,597

Source: RS, ISX

Monthly Transactions (December, 2012)

ISX Code	Paid-in Capital		Closing* Price (IQD)	Market Cap*		Monthly Chg(%)	Intra Month Closings		Trading Days	No of trans. (#)	No of traded shares (mn)	Monthly Turnover		Last Fin.**	P/E			P/B			Net Profit (IQD mn)			BV (IQD mn)			Note		
	(IQD mn)	(\$ mn)		(IQD mn)	(\$ mn)		High	Low				(IQD mn)	('000 \$)		FY10	FY11	Last	FY10	FY11	Last	FY10	FY11	Last	FY10	FY11	Last			
Banking Sector																													
Ashur International Bank	BASH	150,000	125	0.96	144,000	120.0	-3%	0.98	0.93	14	82	126	121	100	9M12	19.8	18.2	6.5	1.9	1.4	1.1	7,259	7,906	22,280	76,562	101,264	127,948	-	
Babylon Bank***	BBAY	150,000	125	0.78	117,000	97.5	-5%	0.84	0.78	13	359	1,286	1,042	869	9M12	26.2	24.2	16.6	2.0	1.1	1.1	4,471	4,834	7,046	59,834	106,946	107,397	-	
Bank of Baghdad***	BBOB	175,000	146	1.92	336,000	280.0	5%	2.30	1.77	18	1,419	3,528	7,073	5,894	9M12	24.6	16.0	11.2	2.8	2.4	2.1	13,669	20,958	30,093	118,788	139,620	162,184	-	
Commercial Bank of Iraq	BCOI	100,000	83	1.27	127,000	105.8	-	1.27	1.27	-	-	-	0	0	9M12	9.6	17.7	6.2	1.3	0.9	0.9	13,266	7,181	20,470	94,539	135,185	145,963	Suspend/GA	
Dijlah & Furat Bank	BDFD	50,000	42	0.85	42,500	35.4	-	0.85	0.85	-	-	-	0	0	9M12	11.0	7.9	61.4	0.8	0.7	0.4	3,879	5,399	692	53,914	57,341	108,777	Suspend/GA	
Dar Es Salaam Inv. Bank	BDSI	105,800	88	2.98	315,284	262.7	-4%	3.20	2.98	18	282	180	561	467	9M12	-	28.9	11.1	4.8	2.8	2.4	1,121	10,917	28,489	66,154	110,915	131,548	-	
Economy Bank***	BEFI	150,000	125	1.13	169,500	141.3	2%	1.14	1.12	12	66	130	147	122	9M12	15.6	17.0	4.9	1.8	1.4	1.1	10,878	9,988	34,603	96,764	121,714	150,318	-	
Elaf Islamic Bank***	BELF	152,000	127	0.91	138,320	115.3	-	0.91	0.88	4	11	44	39	33	9M12	11.2	6.6	11.0	2.2	1.1	1.0	12,306	20,968	12,553	63,319	122,636	132,051	-	
Gulf Commercial Bank***	BGUC	125,000	104	1.08	135,000	112.5	2%	1.12	1.05	18	941	5,755	6,249	5,207	9M12	21.9	10.8	4.2	2.1	1.1	0.9	6,162	12,470	32,285	65,387	120,055	142,408	-	
Investment Bank of Iraq***	BIBI	155,000	129	1.01	156,550	130.5	-8%	1.11	1.01	18	386	7,354	8,039	6,699	6M12	17.6	15.8	23.2	1.8	1.3	1.3	8,902	9,918	6,758	88,455	117,108	120,570	-	
Iraqi Islamic Bank***	BIIB	152,000	127	1.20	182,400	152.0	12%	1.23	1.07	14	54	122	137	114	9M12	-	15.5	7.7	3.5	1.6	1.4	99	11,735	23,696	51,758	114,687	132,459	-	
Middle East Bank	BIME	150,000	125	1.46	219,000	182.5	7%	1.46	1.36	18	1,483	7,616	10,936	9,113	9M12	25.4	11.9	9.0	2.6	1.6	1.2	8,627	18,453	24,325	84,098	137,899	181,656	-	
Kurdistan Int. Bank	BKUI	300,000	250	2.12	636,000	530.0	-2%	2.15	2.10	17	419	1,467	3,144	2,620	9M12	70.0	26.5	10.5	4.8	3.1	2.5	9,088	24,033	60,345	131,985	206,018	251,276	-	
Mosul Bank	BMFI	202,000	168	0.85	171,700	143.1	21%	0.94	0.70	16	788	16,601	15,102	12,585	9M12	16.8	16.1	11.3	2.7	1.9	1.5	10,224	10,673	15,132	64,390	89,155	115,518	-	
Al-Mansour Bank	BMNS	236,000	197	1.23	290,280	241.9	3%	1.36	1.18	18	644	1,367	1,743	1,452	9M12	79.1	36.7	20.2	3.4	2.7	1.2	3,671	7,912	14,383	84,711	109,480	249,444	-	
National Bank of Iraq***	BNOI	152,000	127	0.83	126,160	105.1	2%	0.84	0.80	14	87	113	93	77	9M12	110.5	50.6	7.0	2.4	1.2	1.2	1,142	2,495	18,075	52,913	105,417	105,417	-	
North Bank	BNOR	210,000	175	2.51	527,100	439.3	-11%	2.89	2.51	18	531	3,500	9,582	7,985	9M12	21.1	14.8	6.8	3.5	2.4	1.9	24,955	35,629	78,005	151,749	217,750	276,260	-	
Credit Bank of Iraq***	BROI	150,000	125	2.40	360,000	300.0	18%	2.67	2.07	18	245	136	314	261	9M12	44.0	22.9	25.9	2.7	2.4	2.2	8,181	15,733	13,887	135,093	151,965	162,381	-	
Sumer Commercial Bank***	BSUC	151,000	126	1.02	154,020	128.4	1%	1.10	1.00	16	229	370	371	310	9M12	-	-	25.2	2.0	1.5	1.2	484	237	6,103	75,748	106,000	127,053	-	
United Bank	BUND	250,000	208	1.84	460,000	383.3	-4%	1.94	1.84	18	415	1,357	2,591	2,159	9M12	13.8	10.6	6.8	2.5	1.9	1.8	33,309	43,459	67,798	183,987	247,446	258,199	-	
Union Bank***	BUOI	100,000	83	1.06	106,000	88.3	8%	1.06	1.00	17	166	6,389	6,709	5,591	9M12	14.5	27.7	4.9	1.7	1.6	1.4	7,324	3,828	21,476	60,579	64,406	75,912	-	
Total		3,365,800	2,805		4,913,814	4,094.8						73,992	61,660																
Insurance Sector																													
Ahliya For Insurance	NAHF	2,500	2	0.91	2,275	1.9	-	0.91	0.91	2	8	5	4	4	9M12	19.2	33.9	25.0	1.2	0.9	0.8	119	67	91	1,970	2,625	3,000	-	
Al-Ameen for Insurance	NAME	2,000	2	1.06	2,120	1.8	6%	1.06	0.99	6	23	13	13	11	9M12	54.5	15.4	11.1	1.3	1.0	0.9	39	138	191	1,666	2,226	2,419	-	
Dar Al-Salam for Insurance	NDSA	2,420	2	2.10	5,082	4.2	3%	2.22	2.03	7	34	28	59	49	9M12	23.0	20.2	10.5	1.6	1.6	1.4	221	252	484	3,091	3,236	3,678	-	
Gulf Insurance&Reinsurance	NGIR	2,000	2	0.94	1,880	1.6	19%	1.02	0.77	13	91	143	138	115	9M12	73.3	-	1.9	1.8	0.9	0.7	26	-79	977	1,054	2,080	2,733	-	
Al-Hamraa for Insurance***	NHAM	3,000	3	1.14	3,420	2.9	-	1.14	1.14	-	-	-	0	0	9M12	12.0	3.0	2.7	1.8	1.1	0.8	285	1,130	1,282	1,913	3,075	4,236	-	
Total		11,920	9.9		14,777	12.3						214	179																
Investment Sector																													
Al-Ameen Financial Inv.	VAMF	750	1	0.66	495	0.4	-	0.66	0.66	-	-	-	0	0	9M12	-	-	-	0.8	0.7	0.7	-41	-14	-8	629	740	734	-	
Al-Ayaam Financial Inv.	VAYF	400	0	0.62	248	0.2	-	0.62	0.62	1	2	2	1	1	9M12	30.6	13.3	-	0.6	0.6	0.6	8	19	-4	387	402	394	-	
AL- Batek Investment	VBAT	1,000	1	0.90	900	0.8	-	0.90	0.90	-	-	-	0	0	9M12	67.7	84.4	-	0.6	0.6	0.6	13	11	-13	1,460	1,471	1,460	-	
Al-Khaira Financial Inv.***	VKHA	460	0	0.87	400	0.3	-	0.87	0.87	-	-	-	0	0	9M12	-	8.5	152.4	0.9	0.8	0.8	2	47	3	450	486	484	-	
Al-Khair for Financial Inv.	VKHF	7,000	6	0.32	2,240	1.9	-	0.32	0.32	-	-	-	0	0	3M12	30.5	-	-	0.3	0.3	0.3	73	-238	-584	7,691	7,453	7,425	Suspend/ISC	
Mesopotamia Investment	VMES	1,000	1	0.90	900	0.8	-	0.90	0.90	-	-	-	0	0	9M12	-	53.2	5.5	1.0	1.0	1.0	-81	17	163	894	911	911	-	
AL-Wiaam for Financial Inv.	VWIF	2,000	2	1.57	3,140	2.6	5%	1.64	1.52	7	15	2	4	3	9M12	-	20.8	-	1.9	1.4	1.4	11	151	-1	1,641	2,232	2,227	-	
Al-Zawraa for Financial Inv.	VZAF	1,150	1	1.29	1,484	1.2	8%	1.29	1.20	4	13	4	5	4	9M12	30.1	16.6	160.3	1.3	1.2	1.2	49	89	9	1,178	1,268	1,270	-	
Total		13,760	11.5		9,807	8.2						10	8																

Source: RS, ISX

Monthly Transactions (December, 2012)

	ISX Code	Paid-in Capital		Closing*		Market Cap*		Monthly Chg(%)	Intra Month Closings		Trading Days	No of trans. (#)	No of traded shares (mn)	Monthly Turnover		Last			P/E			P/B			Net Profit (IQD mn)			BV (IQD mn)			Note
		(IQD mn)	(\$ mn)	Price (IQD)	(IQD mn)	(\$ mn)	High		Low	(IQD mn)				(%000 \$)	Fin.**	FY10	FY11	Last	FY10	FY11	Last	FY10	FY11	Last	FY10	FY11	Last	FY10	FY11	Last	
Services Sector																															
Al-Ameen Estate Inv.	SAEI	6,960	6	2.91	20,254	16.9	-	2.91	2.91	1	1	0	0	0	9M12	-	-	-	2.9	2.9	2.9	-13	-36	-3	7,000	6,960	6,960	-			
AL-Badia for General Trans	SBAG	1,800	2	5.20	9,360	7.8	15%	5.51	4.74	17	198	27	135	113	9M12	12.7	18.9	25.7	2.5	2.3	2.3	739	496	364	3,730	3,993	3,996	-			
Baghdad Motor Cars Servicing	SBMC	1,080	1	1.69	1,825	1.5	-	1.69	1.69	-	-	-	0	0	9M12	11.5	-	4.9	1.8	-	1.0	159	-	373	992	-	1,759	Suspend/ISC			
Baghdad Al-Iraq for Gen. Transport.***	SBPT	200	0	43.00	8,600	7.2	0%	50.00	40.50	10	60	1	58	49	9M12	45.1	147.9	23.1	14.3	13.0	17.7	191	58	372	603	663	486	-			
Iraqi for General Transp.	SIGT	1,500	1	7.21	10,815	9.0	-	7.21	7.21	-	-	-	0	0	3M11	-	-	10.7	-	-	2.1	-	-	1,009	-	-	5,158	Suspend/ISC			
Iraqi Land Transport	SILT	10,000	8	5.32	53,200	44.3	11%	5.76	5.03	18	1,086	497	2,619	2,183	9M12	20.2	24.5	26.3	3.7	2.6	2.6	2,631	2,174	2,019	14,543	20,560	20,568	-			
Kharkh Tour Amusement City	SKTA	230	0	11.00	2,530	2.1	-	11.00	10.90	5	5	0	4	4	9M12	30.6	26.6	13.9	11.0	7.8	5.9	83	95	182	231	326	427	-			
Al-Mosul for Funfairs	SMOF	400	0	18.00	7,200	6.0	-3%	18.90	17.50	17	99	6	106	88	9M12	18.2	20.5	9.0	6.4	5.8	4.0	395	351	800	1,127	1,252	1,819	-			
Mamoura Realestate Inv.***	SMRI	15,010	13	3.60	54,036	45.0	26%	3.85	3.06	18	268	451	1,438	1,198	9M12	66.8	112.3	-	4.2	4.0	4.0	809	481	-124	12,892	13,373	13,373	-			
AL-Nukhba for Construction	SNUC	2,000	2	1.62	3,240	2.7	3%	1.70	1.60	7	13	5	8	7	9M12	7.1	7.7	-	1.5	1.2	1.2	455	421	-73	2,174	2,595	2,595	-			
Total		39,180	32.7		171,060	142.5							4,370	3,641																	
Industry Sector																															
Baghdad for Packing Materials	IBPM	540	0	4.20	2,268	1.9	1%	4.62	4.10	11	108	20	89	74	9M12	-	-	-	7.8	4.2	4.5	-7	0	-47	293	540	509	Suspend/GA			
Baghdad Soft Drinks***	IBSD	133,000	111	1.45	192,850	160.7	10%	1.51	1.37	18	1,045	13,035	18,922	15,768	9M12	28.2	57.0	9.7	1.3	1.3	1.2	6,838	3,382	19,873	146,538	150,218	165,583	-			
Electronic Industries	IELI	18,000	15	1.28	23,040	19.2	-	1.28	1.28	-	-	-	0	0	9M12	-	-	-	7.4	0.7	0.7	-3,619	-3,087	91	3,124	32,452	32,929	Suspend/ISC			
Fallujah for Construction Mat.	IFCM	2,268	2	4.14	9,390	7.8	15%	6.25	3.81	17	421	196	971	809	6M12	-	83.5	62.0	6.6	6.1	3.6	3	112	151	1,422	1,541	2,621	-			
Nationality Househ. Furniture	IHFI	1,260	1	0.80	1,008	0.8	-	0.80	0.80	3	7	1	1	0	9M12	-	25.7	7.8	0.6	0.5	0.5	-22	39	129	1,795	1,838	1,952	-			
Al-Hilal Industries	IHLI	12,375	10	0.64	7,920	6.6	-	0.64	0.64	-	-	-	0	0	9M12	-	-	-	3.4	7.8	-	-2,013	-2,394	-4,015	2,296	1,015	-186	Suspend/ISC			
Iraqi for Carton Manufact. and Trading	IICM	3,795	3	0.91	3,453	2.9	18%	0.92	0.80	9	73	54	48	40	9M12	-	-	-	1.0	1.4	2.5	-553	-1,243	-1,346	3,632	2,396	1,394	-			
Iraqi Date Processing&Mark.	IIDP	15,000	13	1.30	19,500	16.3	-12%	1.45	1.28	18	429	808	1,122	935	3M12	29.4	-	7.6	1.1	-	1.0	663	-	2,577	17,449	-	18,701	-			
Iraqi Engineering Works***	IIEW	1,500	1	2.45	3,675	3.1	32%	2.60	1.90	9	71	15	36	30	9M12	67.6	13.3	39.6	2.9	2.3	2.2	54	277	93	1,288	1,567	1,639	-			
Iraqi For Tufted Carpets	IITC	500	0	4.60	2,300	1.9	2%	4.65	4.50	11	59	9	43	36	9M12	16.7	13.5	4.8	1.2	1.2	1.2	138	171	479	1,885	1,885	1,876	-			
Kirkuk for Producing	IKFP	744	1	1.40	1,042	0.9	-	1.40	1.40	4	7	2	2	2	FY10	-	-	-	1.7	-	1.7	-104	-68	-104	604	-	604	-			
Al -Khazir for Construction M.	IKHC	1,100	1	1.90	2,090	1.7	-1%	2.00	1.90	5	12	1	2	2	3M12	121.6	-	-	1.8	1.9	2.0	17	-90	-35	1,132	1,075	1,056	-			
AL- Kindi of Veterinary Vac.	IKLV	3,600	3	3.92	14,112	11.8	12%	4.10	3.52	18	493	248	944	787	9M12	19.1	15.2	7.2	3.7	2.9	3.0	740	927	1,953	3,799	4,823	4,736	-			
Al-Mansour Pharma. Ind.***	IMAP	6,469	5	1.20	7,763	6.5	-4%	1.30	1.20	18	156	89	112	94	6M12	101.5	84.3	9.4	2.6	2.2	2.0	76	92	829	2,971	3,563	3,978	-			
Modern Chemical Industries***	IMCI	90	0	60.00	5,400	4.5	-	60.00	60.00	-	-	-	0	0	9M12	77.4	56.9	-	17.4	1.1	1.1	70	95	-44	311	4,807	4,728	-			
Modern Construction Mat.	IMCM	5,620	5	0.81	4,552	3.8	11%	0.99	0.71	12	57	34	31	26	9M12	-	-	37.3	1.5	1.0	1.0	-290	-166	122	3,072	4,534	4,609	-			
Metallic Ind. and Bicycles***	IMIB	7,500	6	1.36	10,200	8.5	-8%	1.49	1.30	9	153	95	156	130	3M12	-	-	-	1.8	-	2.2	-1,604	-1,080	-1,865	5,600	-	4,735	-			
Modern Sewing	IMOS	900	1	3.57	3,213	2.7	5%	3.57	3.46	16	130	35	122	102	9M12	-	-	40.7	4.1	4.1	4.1	-312	10	79	780	793	793	-			
Modern Paint Industries	IMPI	9,214	8	2.29	21,099	17.6	-	2.29	2.29	-	-	-	0	0	9M12	-	185.0	-	2.1	2.1	2.2	42	114	-847	10,223	10,218	9,584	Suspend/ISC			
National Chemical Industries	INCP	15,188	13	0.97	14,732	12.3	2%	1.06	0.95	18	373	508	516	430	9M12	-	-	-	2.7	-	1.5	-1,283	-	-2,380	5,373	-	9,672	-			
Nineveh Food Industries	INFI	3,600	3	0.90	3,240	2.7	-	0.90	0.90	-	-	-	0	0	9M12	-	-	-	1.3	1.3	1.3	-321	-92	-39	2,575	2,484	2,454	Suspend/ISC			
North Soft Drinks	INSD	41,438	35	0.51	21,133	17.6	-28%	0.68	0.49	2	48	59	31	26	9M12	-	-	-	0.7	0.7	0.7	-1,512	-880	-271	29,926	29,047	28,843	-			
Ready Made Clothes	IRMC	1,500	1	7.00	10,500	8.8	-	7.10	7.00	9	18	1	9	7	9M12	15.0	34.9	81.3	8.6	6.9	6.9	700	301	129	1,220	1,522	1,522	-			
The Light Industries	ITLI	16,800	14	0.58	9,744	8.1	-	0.58	0.58	-	-	-	0	0	9M12	-	-	-	1.6	3.8	4.8	-5,247	-3,596	-5,474	6,079	2,593	2,037	Suspend/ISC			
Total		302,000	251.7		394,224	328.5							23,156	19,297																	

Source: RS, ISX

Monthly Transactions (November, 2012)

	ISX Code	Paid-in Capital (IQD mn)	Closing* Price (IQD)	Market Cap* (IQD mn)	Monthly Chg(%)	Intra Month Closings High	Low	Trading Days	No of trans.(#)	No of traded shares (mn)	Monthly Turnover (IQD mn)	Last Fin.**	P/E FY10	P/E FY11	P/B Last	P/B FY10	P/B FY11	Net Profit (IQD mn) FY10	Net Profit (IQD mn) FY11	Net Profit (IQD mn) Last	BV (IQD mn) FY10	BV (IQD mn) FY11	BV (IQD mn) Last	Note					
Hotels&Tourism Sector																													
Ashour Hotel	HASH	376	0	10.40	3,914	3.3	11%	10.50	9.50	12	54	3	28	23	9M12	-	-	82.4	20.5	21.0	21.0	-71	-21	47	191	186	186	-	
Baghdad Hotel	HBAG	3,844	3	8.55	32,866	27.4	-1%	8.66	8.35	16	104	11	94	79	9M12	179.2	-	-	22.7	24.8	10.1	183	-301	-946	1,451	1,324	3,247	-	
Babylon Hotel	HBAY	1,350	1	27.90	37,665	31.4	-9%	30.25	27.50	15	84	9	264	220	9M12	-	-	-	-	-	143.0	-350	31	143	-30	144	263	-	
Ishtar Hotels	HISH	1,500	1	27.51	41,265	34.4	-3%	28.01	27.51	8	55	11	315	263	9M12	-	55.8	-	14.6	15.9	13.5	-1,690	740	39	2,823	2,589	3,055	-	
Karbala Hotels***	HKAR	5,000	4	2.60	13,000	10.8	4%	2.75	2.30	8	268	94	364	304	9M12	84.5	-	-	7.0	6.6	6.6	154	-23	-22	1,869	1,968	1,968	-	
Al- Mansour Hotel	HMAN	2,923	2	35.00	102,305	85.3	9%	36.00	32.50	9	40	13	465	387	9M12	-	-	-	26.3	26.2	25.5	259	21	-3,594	3,888	3,910	4,006	-	
National for Tourist Invest.	HNTI	3,554	3	19.20	68,236	56.9	-3%	21.00	19.20	13	45	3	65	54	9M12	80.9	102.1	51.3	16.4	14.0	11.6	844	668	1,331	4,173	4,870	5,872	-	
Palestine Hotel	HPAL	4,470	4	17.45	78,002	65.0	-	17.45	17.45	-	-	-	0	0	FY09	-	-	-	-	-	27.2	-	-	-1,159	-	-	2,873	Suspend/ISC	
Al-Sadeer Hotel	HSAD	1,239	1	17.25	21,373	17.8	1%	17.50	17.10	13	59	3	50	42	9M12	86.2	80.0	-	18.9	15.3	20.0	248	267	-442	1,128	1,400	1,068	-	
Tourist Village of Mosul dam	HTVM	40	0	30.50	1,220	1.0	-2%	31.00	30.00	5	15	0	9	7	9M12	-	-	19.9	-	-	-	-261	-346	61	-342	-681	-635	-	
Total		24,296	20.2		399,846	333.2																							
Agriculture Sector																													
Al-Ahlyia for Agricultural Prod.	AAHP	575	0	0.95	546	0.5	-	0.95	0.95	-	-	-	0	0	9M12	-	51.4	-	2.9	2.8	3.0	-12	11	-22	187	198	181	-	
Iraqi Agricultural Prod. Mark. Meat***	AIPM	4,125	3	9.10	37,538	31.3	14%	9.15	8.30	18	215	201	1,824	1,520	9M12	-	-	-	6.5	6.3	6.4	40	126	-157	5,744	5,956	5,886	-	
Iraqi Agricultural Products	AIRP	360	0	9.75	3,510	2.9	15%	9.91	8.50	7	16	1	7	5	9M12	38.7	33.8	58.6	3.6	3.4	4.3	91	104	60	983	1,041	817	-	
Iraqi for Seed Production	AISP	4,000	3	4.25	17,000	14.2	-	4.25	4.25	-	-	-	0	0	3M12	19.5	17.8	-	10.5	6.6	2.7	874	954	-13,178	1,622	2,588	6,372	Suspend/ISC	
Modern for Animal Production***	AMAP	3,600	3	0.89	3,204	2.7	-1%	0.95	0.88	15	53	98	91	76	6M12	121.9	69.6	18.2	3.8	0.8	1.5	26	46	176	834	4,251	2,192	-	
Middle East for Prod.- Fish	AMEF	300	0	16.75	5,025	4.2	-4%	17.00	16.00	9	17	0	3	2	6M12	57.8	42.5	10.5	9.8	3.6	3.3	87	118	478	514	1,408	1,529	-	
Total		12,960	10.8		66,823	55.7																							
Grand Total		3,769,916	3,141.6		5,970,350	4,975																							

Source: RS, ISX

*As of 25/12/2012

**Last Fin.:Recently announced financial statements

***When the original shares resume trading, we start using the number of shares that the company will reach after the capital increase with the assumption that the capital increase was reflected to the price of the shares. We use the new capital in calculating Mcap.

For any inquiries, contact:

Research

Aysegul Ozge Ozgur

aozgur@rs.iq

Tel: +90 539 456 4566

Trading

traders@rs.iq

Tel: +964 (0) 727 002 0407

Info

info@rs.iq

Tel: +964 (770) 650 7007

RS Bloomberg page: <RSIQ>

RS Website: RS.IQ



Rabee Securities (**RS**), Winner of EMEA Finance magazine's Middle East Banking Awards 2011, "Best Asset Manager & Broker in Iraq".



RS is a proud sponsor of the Iraq Pavilion of Venice Biennale 2011.

Baghdad, HQ

903/14/19

Karada

Baghdad, Iraq

Tel: +964 (727) 002 0407

Erbil

Italian Village offices

Office No: 32

Erbil, Iraq

Tel: +964 (770) 044 6680

Sulaymaniyah

Rand Gallery

Office No: 9, Floor:3

Sulaymaniyah, Iraq

Tel: +964 (770) 651 9944

Tel: +964 53 330 1808

Istanbul Rep. Office

Halaskargazi cad.

No:103/7A

Osmanbey

Istanbul, Turkey

Tel: +90 (212) 219 2524

DISCLAIMER

This publication may not be reproduced, modified, or re-disseminated in whole or in part without the prior written permission of Rabee Securities. The information provided herein is of a general nature and for informational purposes only and is not intended to serve as an offer or solicitation with respect to the purchase or sale of any security, or as a recommendation to adopt any particular trading strategy. Such information is subject to change without prior notice. Although Rabee Securities obtains information from sources it considers reliable, Rabee Securities makes no representations or warranties, express or implied, as to the information's accuracy or completeness. Furthermore, such information may be incomplete or condensed. Rabee Securities, its affiliates, directors, employees, assigns, agents, and successors bear no liability for any errors or omissions in this publication or for any losses arising from the use of or reliance upon this information. This limitation on liability applies to direct, indirect, consequential, special, punitive, or other damages, as well as damages for loss of profits or business interruption. Investors shall bear all responsibility for investment decisions taken on the basis of the contents of this report. Rabee Securities strongly advises potential investors to seek financial guidance when determining whether an investment is appropriate to their needs. All estimates included in this report constitute Rabee Securities' opinion as of the date published on the report and are subject to change without notice.