

RS - Iraq Stock Exchange (ISX) Monthly Report

Rabee Securities (RS**)**

*Website: **RS.IQ***

*Bloomberg page: <**RS.IQ**>*

ISX - Performance

	End of Jan.'13	Chn (m/m)	Chn (y/y)
CBI Auction Price of Iraqi Dinar (IQD)	1166	-	-0.3%
RSISX Closing (IQD)	1639	2%	9%
Mcap of ISX (IQD bn)	5,913	-1%	22%
Mcap of ISX (\$ mn)	4,928	-1%	19%

	Jan.'13	Chn (m/m)	Chn (y/y)
Trading Vol (IQD bn)	99	-6%	63%
Trading Vol (\$ mn)	83	-6%	59%
Traded Shares (bn)	69	-7%	154%
Number of Transactions ('000)	11	-24%	12%
Foreigners' Share in Trading Vol. (%)	2.9%	-2.4ppt	-23.9ppt

	2012	Chn (y/y)
Trading Vol (IQD bn)	894	-5%
Trading Vol (\$ mn)	750	-7%
Traded Shares (bn)	626	27%
Number of Transactions ('000)	136	3%
Foreigners' Share in Trading Vol. (%)	6.1%	-5.8ppt

	End of Dec.'12	End of Jan.'13
Number of Listed Companies*	84	83

No. of Companies Suspended from Trading due to		
General Assembly	3	4
ISC	10	8
Total Number of Suspended Comp.	13	12
Number of Tradable Companies	71	71

	Dec.'12 (m/m)	Jan.'13 (m/m)
Number of Companies (Price Up)	37	16
Number of Companies (Price Down)	20	40

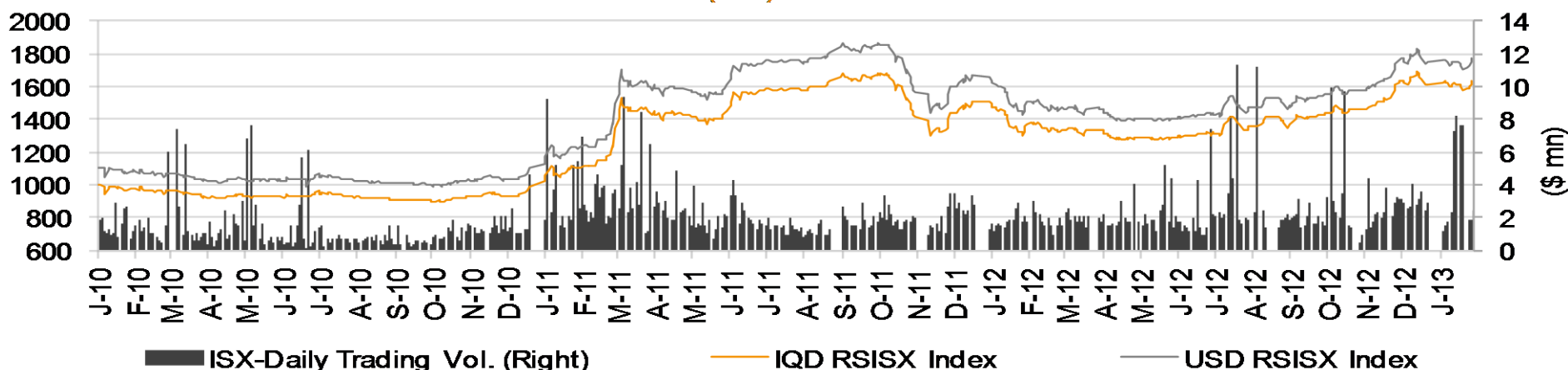
Source: RS, ISX

*11 of the listed companies are trading in the Non-Regular Market

** According to Iraqi Securities Commission (ISC)'s decision, Nineveh Food Industries (INFI) was delisted from Iraq Stock Exchange on January 31 for failing to pay its financial obligations. INFI has not been trading since August 9, 2011.

RSISX Index

Rabee Securities (RS) Index - RSISX Index

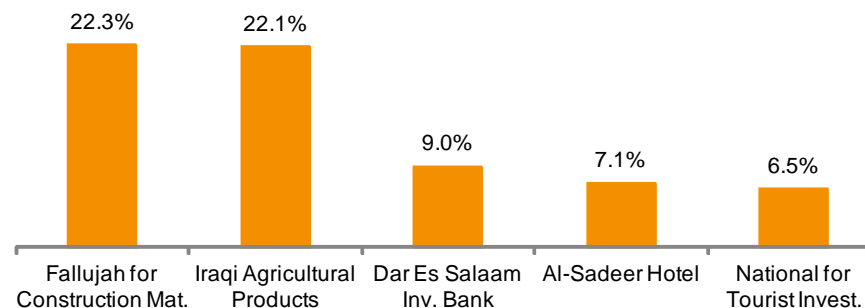


Source: RS, ISX

Top Five (January, 2013)

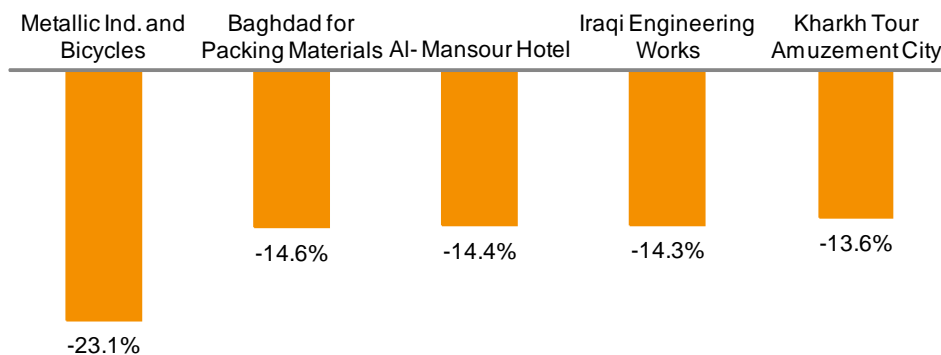
Best Performers

	ISX Code	Closing Price (IQD)*	% Chg. (m/m)
Fallujah for Construction Mat.	IFCM	4.89	22.3%
Iraqi Agricultural Products	AIRP	11.90	22.1%
Dar Es Salaam Inv. Bank	BDSI	3.27	9.0%
Al-Sadeer Hotel	HSAD	18.75	7.1%
National for Tourist Invest.	HNTI	20.50	6.5%



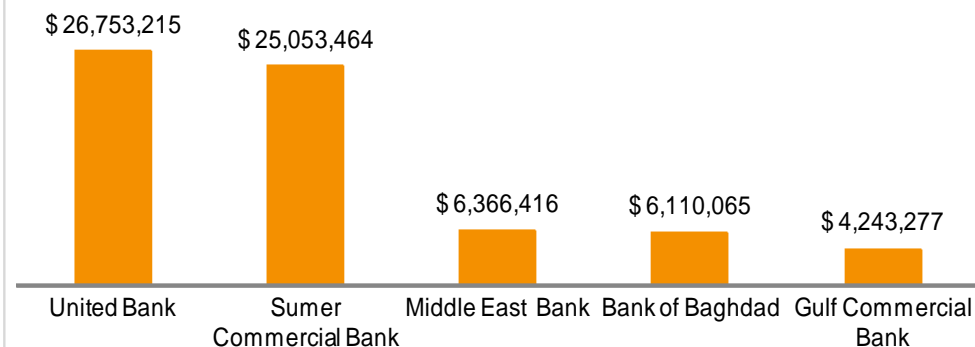
Worst Performers

	ISX Code	Closing Price (IQD)*	% Chg. (m/m)
Metallic Ind. and Bicycles	IMIB	1.00	-23.1%
Baghdad for Packing Materials	IBPM	2.22	-14.6%
Al- Mansour Hotel	HMAN	29.95	-14.4%
Iraqi Engineering Works	IIEW	2.10	-14.3%
Kharkh Tour Amuzement City	SKTA	9.50	-13.6%



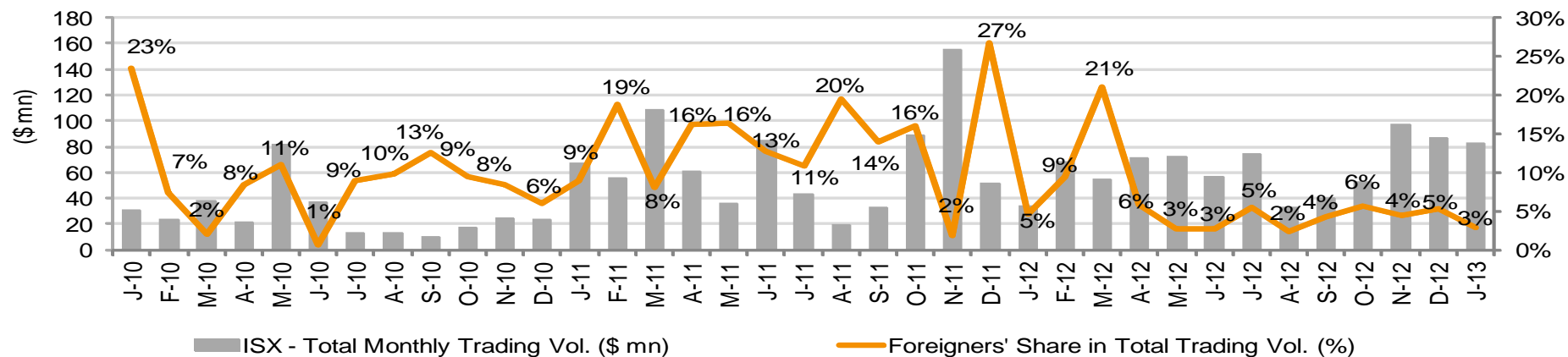
Top 5 Trading Volume

	ISX Code	Trading Vol. (\$)/m	Share in total T. Volume
United Bank	BUND	26,753,215	32.3%
Sumer Commercial Bank	BSUC	25,053,464	30.3%
Middle East Bank	BIME	6,366,416	7.7%
Bank of Baghdad	BBOB	6,110,065	7.4%
Gulf Commercial Bank	BGUC	4,243,277	5.1%



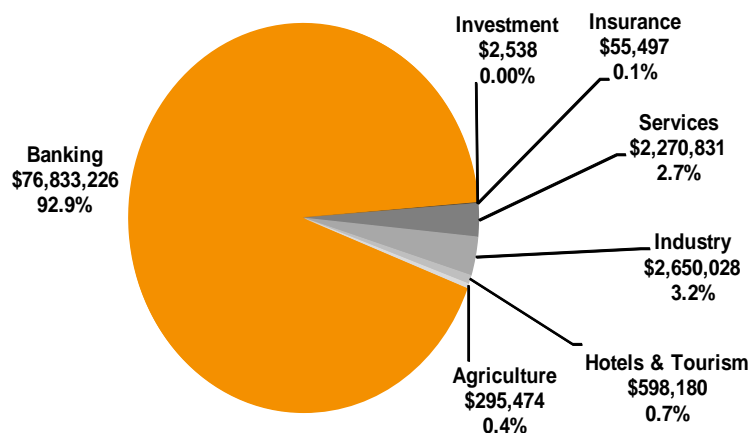
*As of 31/01/2013.

ISX - Total Monthly Trading Volume (\$ mn) & Foreigners' Share in Total Trading Vol. (%)



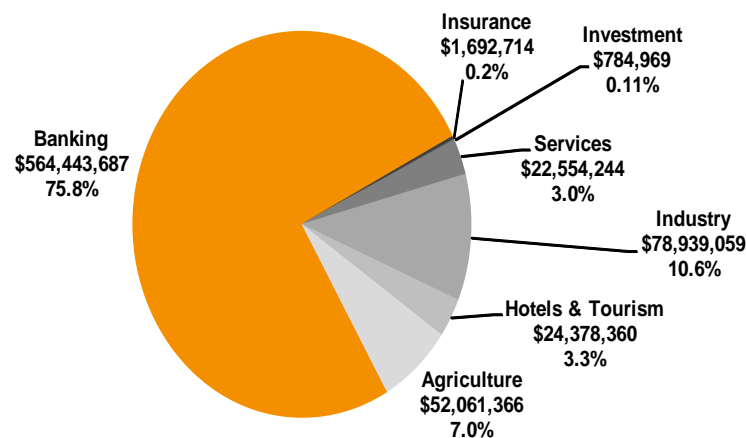
Source: RS, ISX

Breakdown of January 2013 Trading Volume



Source: RS, ISX

Breakdown of 2012 Trading Volume



Source: RS, ISX

Recent Corporate Actions

Company Name	ISX Code	Suspended from Trading	Resumed Trading*	New Shares Resumed Trading	Rights issue (%)	Bonus issue (%)	Paid-in Capital BEFORE the increase (IQD bn)	Paid-in Capital AFTER the increase** (IQD bn)	Current Paid-in Capital (IQD bn)	Cash dividend ratio (%)
Al-Ahlyia for Agricultural	AAHP	17.01.2013	-	-	-	-	-	-	0.58	-
Iraqi Agricultural Prod. Mark. Meat***	AIPM	03.10.2012	04.11.2012	-	-	-	-	-	4.13	-
Modern for Animal Production***	AMAP	11.10.2012	23.10.2012	-	100.0%	-	1.80	3.60	3.60	-
Ashur Bank	BASH	18.06.2012	05.07.2012	23.12.2012	42.7%	7.3%	100.00	150.00	150.00	-
Babylon Bank***	BBAY	21.11.2012	09.12.2012	-	45.4%	4.6%	100.00	150.00	150.00	-
Bank of Baghdad	BBOB	06.06.2012	01.07.2012	14.01.2013	37.2%	17.8%	112.90	175.00	175.00	-
Commercial Bank of Iraq	BCOI	17.10.2012	-	-	50.0%	-	100.00	150.00	100.00	7.5%
Economy Bank***	BEFI	13.09.2012	08.10.2012	-	41.0%	9.0%	100.00	150.00	150.00	-
Gulf Commercial Bank	BGUC	25.06.2012	10.07.2012	22.01.2013	10.6%	9.7%	103.95	125.00	125.00	-
Iraqi Islamic Bank	BIIB	21.07.2012	12.08.2012	09.01.2013	33.8%	11.0%	102.35	152.00	152.00	-
Iraqi Middle East Investment Bank	BIME	23.04.2012	01.07.2012	10.10.2012	-	-	-	-	150.00	-
Kurdistan International Bank	BKUI	13.08.2012	06.09.2012	23.12.2012	100.0%	-	150.00	300.00	300.00	-
Mosul Bank	BMFI	05.08.2012	04.12.2012	04.12.2012	52.0%	50.0%	100.00	202.00	202.00	-
Sumer Commerical Bank	BSUC	28.08.2012	11.09.2012	13.01.2013	30.2%	-	116.00	151.00	151.00	-
United Bank***	BUND	08.04.2012	01.07.2012	14.11.2012	-	-	-	-	250.00	-
Karbala Hotels***	HKAR	09.12.2012	23.12.2012	-	208.0%	-	1.62	5.00	5.00	-
Al-Sadeer Hotel***	HSAD	14.11.2012	02.12.2012	-	-	-	-	-	1.24	-
Baghdad for Packing Materials***	IBPM	20.12.2012	14.01.2013	-	100.0%	-	0.54	1.08	1.08	-
Fallujah Construction Materials	IFCM	05.06.2012	01.07.2012	23.12.2012	-	5.0%	2.16	2.27	2.27	-
Al -Hilal Industries***	IHLI	05.08.2012	16.01.2013	-	-	-	-	-	12.38	-
Iraqi Date Processing and Marketing***	IIDP	13.01.2013	28.01.2013	-	-	15.0%	15.00	17.25	17.25	-
Iraqi Engineering Works***	IIEW	24.09.2012	08.10.2012	-	20.0%	30.0%	1.00	1.50	1.50	-
AL- Kindi for Production of Veterinary***	IKLV	10.01.2013	31.01.2013	-	-	25.0%	3.60	4.50	4.50	-
Al-Mansour Pharma. Ind.***	IMAP	07.10.2012	21.10.2012	-	100.0%	-	3.23	6.47	6.47	-
Metallic Ind. and Bicycles***	IMIB	11.12.2012	24.12.2012	-	50.0%	-	5.00	7.50	7.50	-
National Chemical Industries***	INCP	18.11.2012	29.11.2012	-	-	-	-	-	15.19	-
Northern Soft Drinks & Mineral Water	INSD	15.07.2012	24.12.2012	24.12.2012	30.0%	-	31.88	41.44	41.44	-
Ready Made Clothes	IRMC	13.08.2012	04.09.2012	14.11.2012	-	-	-	-	1.50	-
AHliya For Insurance***	NAHF	18.10.2012	07.11.2012	-	-	-	-	-	2.50	-
Al-Hamraa Insurance	NHAM	12.11.2012	28.11.2012	17.01.2013	-	50.0%	2.00	3.00	3.00	-
Baghdad Al-Iraq for Gen. Transport.***	SBPT	06.11.2012	06.12.2012	-	-	25.0%	0.16	0.20	0.20	-
Iraqi Land Transport***	SILT	20.01.2013	06.02.2013	-	-	40.0%	10.00	14.00	14.00	-
AL-Nukhba for Construction***	SNUC	30.09.2012	14.10.2012	-	-	-	-	-	2.00	-
Al-Khaima Financial Inv.***	VKHA	10.10.2012	20.11.2012	-	-	15.0%	0.40	0.46	0.46	-
Al-Zawraa for Financial Inv.	VZAF	12.07.2012	31.07.2012	23.12.2012	-	15.0%	1.00	1.15	1.15	-

Source: RS, ISX

*If there is a capital increase, this date shows the date when original shares resumed trading.

**Paid-in Capital AFTER the increase shows the capital the company reached / will reach after the completion of the capital increase processes.

***When the original shares resume trading, we start using the number of shares that the company will reach after the capital increase with the assumption that the capital increase was reflected to the price of the shares.

ISX Companies which are not trading due to General Assembly Meetings*

Company Name	ISX Code	Suspended from Trading	GA Date	Rights issue (%)	Bonus issue (%)	Paid-in Capital BEFORE the increase (IQD bn)	Paid-in Capital AFTER the increase (IQD bn)
Banking Sector							
Dijlah & Furat Bank	BDFD	19.05.2011	12.04.2012	200.0%	-	100.0	300.0
Commercial Bank of Iraq	BCOI	17.10.2012	24.10.2012	50.0%	-	100.0	150.0
Services Sector							
Iraqi Land Transport	SILT	20.01.2013	27.01.2013	-	40.0%	10.0	14.0
Agriculture Sector							
Al-Ahlyia for Agricultural Prod.	AAHP	17.01.2013	23.01.2013	-	-	0.6	0.6

*As of 31/01/2013

Source: RS, ISX

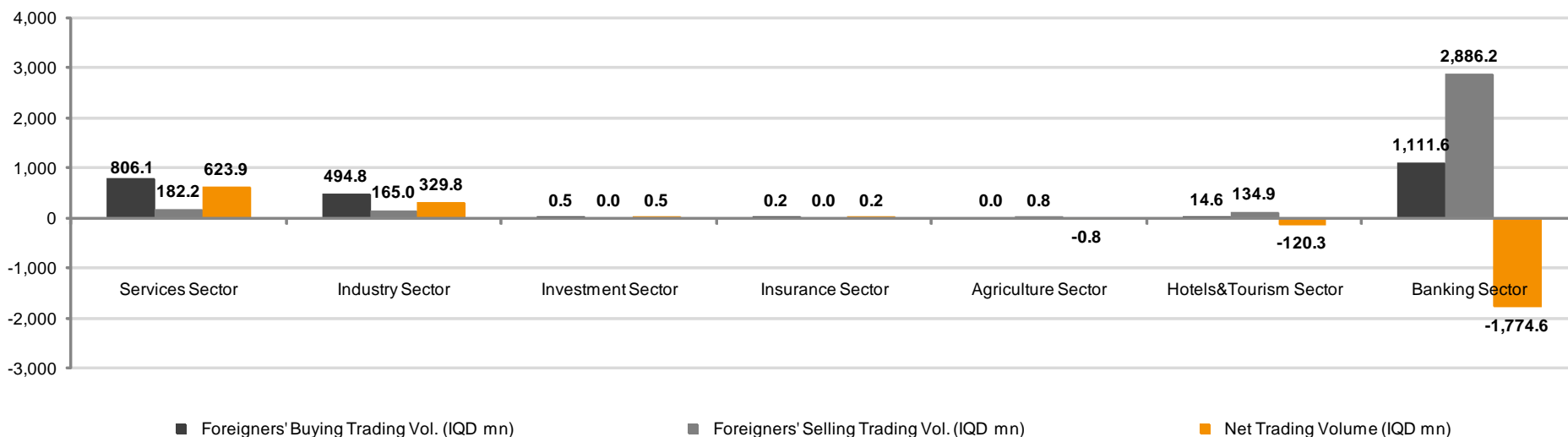
ISX Companies which are not trading due to Iraqi Securities Commission's (ISC) Decision*

Company Name / Sector Name	ISX Code	Suspended from Trading	Company Name / Sector Name	ISX Code	Suspended from Trading
Industry Sector			Hotels&Tourism Sector		
Modern Paint Industries	IMPI	05.08.2012	Palestine Hotel	HPAL	09.08.2011
The Light Industries	ITLI	05.08.2012	Agriculture Sector		
Electronic Industries	IELI	05.08.2012	Iraqi for Seed Production	AISP	04.11.2013
Services Sector			Investment Sector		
Baghdad Motor Cars Servicing	SBMC	05.08.2012	Al-Khair for Financial Inv.	VKHF	03.10.2012
Iraqi for General Transp.	SIGT	05.08.2012			

*As of 31/01/2013

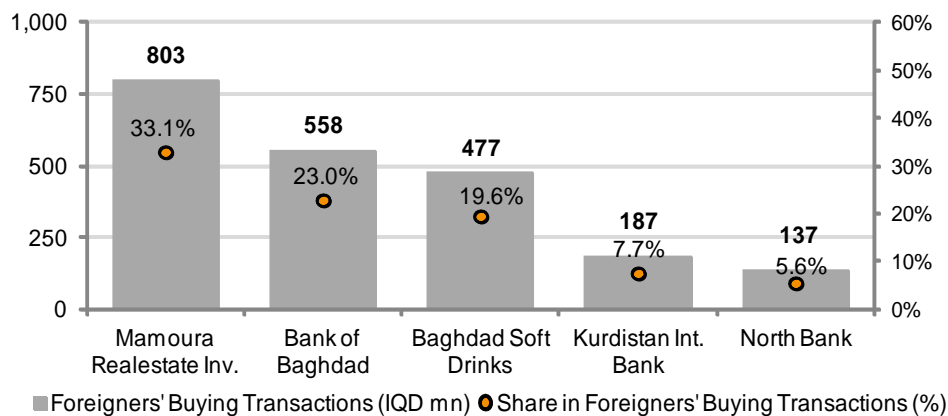
Source: RS, ISX

Foreigners' Transactions* (Ranked According to Net Trading Volumes) - January, 2013

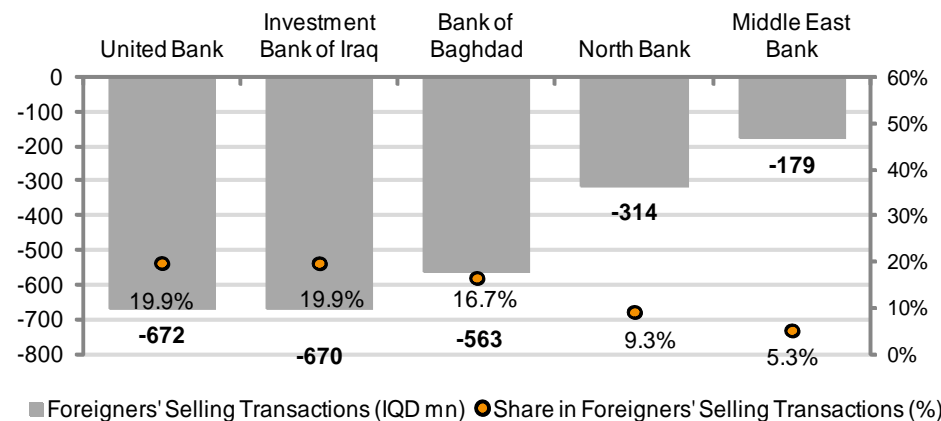


Source: RS, ISX
*Excluding Non-Regular Market

Top Five Companies according to Foreigners' Buying and Selling Transactions* (January, 2013)



*Excluding Non-Regular Market



*Excluding Non-Regular Market

Foreigners' Buying Transactions* (January, 2013)

Company Name	ISX Code	No. of Trans	No. of Traded Shares	Trading Volume (IQD)	Trading Volume (\$)
Banking Sector					
Babylon Bank	BBAY	3	686,048	512,477	427
Bank of Baghdad	BBOB	129	306,540,748	558,172,107	465,143
Dar Es Salaam Inv. Bank	BDSI	7	2,296,267	7,778,928	6,482
Economy Bank	BEFI	4	1,933,397	2,126,439	1,772
Elaf Islamic Bank	BELF	5	30,716,000	25,509,960	21,258
Gulf Commercial Bank	BGUC	20	58,368,248	65,159,621	54,300
Investment Bank of Iraq	BIBI	8	5,717,302	5,661,282	4,718
Iraqi Islamic Bank	BIIB	4	1,269,840	1,542,123	1,285
Middle East Bank	BIME	25	49,027,295	67,379,323	56,149
Kurdistan Int. Bank	BKUI	49	91,600,000	186,703,000	155,586
Mosul Bank	BMFI	3	652,651	565,280	471
Al-Mansour Bank	BMNS	4	7,454,552	8,915,462	7,430
North Bank	BNOR	18	53,885,555	136,898,999	114,082
Credit Bank of Iraq	BROI	6	17,250,000	40,515,000	33,763
Sumer Commercial Bank	BSUC	6	1,753,056	1,875,770	1,563
United Bank	BUND	2	1,200,000	2,210,000	1,842
Union Bank	BUOI	1	103,186	113,505	95
TOTAL		294	630,454,145	1,111,639,275	926,366
Insurance Sector					
Al-Ameen for Insurance	NAME	1	200,000	200,000	167
TOTAL		1	200,000	200,000	167
Investment Sector					
AL-Wiaam for Financial Inv.	VWIF	1	312,000	499,200	416
TOTAL		1	312,000	499,200	416
Services Sector					
AL-Badia for General Trans	SBAG	1	200,000	1,090,000	908
Iraqi Land Transport	SILT	2	450,000	2,370,000	1,975
Mamoura Real Estate Inv.	SMRI	259	209,289,293	802,605,529	668,838
TOTAL		262	209,939,293	806,065,529	671,721
Industry Sector					
Baghdad for Packing Materials	IBPM	1	200,000	470,000	392
Baghdad Soft Drinks	IBSD	171	321,035,641	476,598,430	397,165
Fallujah for Construction Mat.	IFCM	3	2,400,000	12,476,000	10,397
Nationality Househ. Furniture	IHFI	2	170,000	136,000	113
Iraqi Engineering Works	IIEW	2	152,750	329,940	275
Al -Khazer for Construction M.	IKHC	1	200,000	340,000	283
AI- Kindi of Veterinary Vac.	IKLV	1	750,000	2,062,500	1,719
Al-Mansour Pharma. Ind.	IMAP	3	651,622	779,946	650
National Chemical Industries	INCP	3	1,050,125	974,891	812
North Soft Drinks	INSD	5	1,300,000	630,000	525
TOTAL		192	327,910,138	494,797,708	412,331
Hotels&Tourism Sector					
Baghdad Hotel	HBAG	2	108,250	914,475	762
Babylon Hotel	HBAY	2	200,000	5,350,000	4,458
Karbala Hotels	HKAR	8	1,659,250	4,201,718	3,501
Al- Mansour Hotel	HMAN	1	5,075	170,013	142
National for Tourist Invest.	HNTI	2	100,000	2,050,000	1,708
Al-Sadeer Hotel	HSAD	3	100,000	1,926,000	1,605
TOTAL		18	2,172,575	14,612,205	12,177
GRAND TOTAL		768	1,170,988,151	2,427,813,917	2,023,178

Source: RS, ISX

*Excluding Non-Regular Market

Foreigners' Selling Transactions* (January, 2013)

Company Name	ISX Code	No. of Trans	No. of Traded Shares	Trading Volume (IQD)	Trading Volume (\$)
Banking Sector					
Ashur International Bank	BASH	1	19,000	16,340	14
Babylon Bank	BBAY	32	130,962,000	96,134,140	80,112
Bank of Baghdad	BBOB	67	303,025,744	563,012,194	469,177
Dar Es Salaam Inv. Bank	BDSI	4	4,941,477	16,321,874	13,602
Economy Bank	BEFI	1	122,857	129,000	107
Elaf Islamic Bank	BELF	2	262,000	224,600	187
Gulf Commercial Bank	BGUC	11	111,222,355	128,223,448	106,853
Investment Bank of Iraq	BIBI	157	689,472,840	670,448,180	558,707
Iraqi Islamic Bank	BIIB	5	13,572,237	15,837,465	13,198
Middle East Bank	BIME	17	125,126,302	179,349,441	149,458
Kurdistan Int. Bank	BKUI	49	83,851,135	159,781,157	133,151
Mosul Bank	BMFI	1	828,919	679,714	566
Al-Mansour Bank	BMNS	31	57,768,549	69,389,485	57,825
National Bank of Iraq	BNOI	2	612,000	507,840	423
North Bank	BNOR	30	120,311,136	314,479,399	262,066
Sumer Commercial Bank	BSUC	1	20,000	21,400	18
United Bank	BUND	87	376,050,000	671,665,200	559,721
Union Bank	BUOI	1	20,000	22,000	18
TOTAL		499	2,018,188,551	2,886,242,876	2,405,202
Services Sector					
AL-Badia for General Trans	SBAG	1	40,000	206,000	172
Iraqi Land Transport	SILT	30	11,035,350	59,340,002	49,450
Mamoura Real Estate Inv.	SMRI	22	31,779,211	122,240,539	101,867
AL-Nukhba for Construction	SNUC	2	228,000	372,080	310
TOTAL		55	43,082,561	182,158,621	151,799
Industry Sector					
Baghdad Soft Drinks	IBSD	6	8,260,465	12,246,488	10,205
Fallujah for Construction Mat.	IFCM	6	2,510,761	14,145,600	11,788
Iraqi Engineering Works	IIEW	1	100,000	210,000	175
Al-Mansour Pharma. Ind.	IMAP	1	303,500	364,200	304
Metallic Ind. and Bicycles	IMIB	5	2,000,000	2,045,000	1,704
Modern Sewing	IMOS	3	550,000	1,980,000	1,650
National Chemical Industries	INCP	58	139,135,000	127,884,198	106,570
North Soft Drinks	INSD	2	6,000,000	2,940,000	2,450
Ready Made Clothes	IRMC	5	450,000	3,154,500	2,629
TOTAL		87	159,309,726	164,969,985	137,475
Hotels&Tourism Sector					
Babylon Hotel	HBAY	6	818,850	21,897,280	18,248
Ishtar Hotels	HISH	5	437,000	11,144,500	9,287
Al- Mansour Hotel	HMAN	7	1,263,050	37,608,000	31,340
National for Tourist Invest.	HNTI	13	2,900,000	62,290,000	51,908
Al-Sadeer Hotel	HSAD	1	100,000	1,975,000	1,646
TOTAL		32	5,518,900	134,914,780	112,429
Agriculture Sector					
Iraqi Agricultural Prod. Mark. Meat	AIPM	1	85,822	759,525	633
TOTAL		1	85,822	759,525	633
GRAND TOTAL		674	2,226,185,560	3,369,045,787	2,807,538

Source: RS, ISX

*Excluding Non-Regular Market

Monthly Transactions (January, 2013)

ISX Code	Paid-in Capital		Closing* Price (IQD)	Market Cap*		Monthly Chg(%)	Intra Month Closings		Trading Days	No of trans. (#)	No of traded shares (mn)	Monthly Turnover		Note	
	(IQD mn)	(\$ mn)		(IQD mn)	(\$ mn)		High	Low				(IQD mn)	('000 \$)		
Banking Sector															
Ashur International Bank	BASH	150,000	125	0.87	130,500	108.8	-6%	0.95	0.86	13	44	54	49	40	-
Babylon Bank***	BBAY	150,000	125	0.73	109,500	91.3	-6%	0.78	0.73	16	196	527	391	325	-
Bank of Baghdad***	BBOB	175,000	146	1.84	322,000	268.3	2%	1.89	1.73	18	1,681	4,041	7,332	6,110	-
Commercial Bank of Iraq	BCOI	100,000	83	1.27	127,000	105.8	-	1.27	1.27	-	-	-	-	-	Suspend/GA
Dijlah & Furat Bank	BDFD	50,000	42	0.85	42,500	35.4	-	0.85	0.85	-	-	-	-	-	Suspend/GA
Dar Es Salaam Inv. Bank	BDSI	105,800	88	3.27	345,966	288.3	9%	3.47	2.75	18	506	355	1,167	973	-
Economy Bank***	BEFI	150,000	125	1.06	159,000	132.5	-6%	1.13	1.05	9	30	29	31	26	-
Elaf Islamic Bank***	BELF	152,000	127	0.87	132,240	110.2	-1%	0.88	0.80	7	16	42	35	29	-
Gulf Commercial Bank	BGUC	125,000	104	1.16	145,000	120.8	6%	1.17	1.07	18	1,005	4,512	5,092	4,243	-
Investment Bank of Iraq***	BIBI	155,000	129	0.99	153,450	127.9	-2%	1.02	0.96	17	334	1,168	1,142	952	-
Iraqi Islamic Bank	BIB	152,000	127	1.16	176,320	146.9	-6%	1.25	1.16	16	78	80	95	79	-
Middle East Bank	BIME	150,000	125	1.47	220,500	183.8	1%	1.47	1.31	18	1,401	5,487	7,640	6,366	-
Kurdistan Int. Bank	BKUI	300,000	250	1.99	597,000	497.5	-5%	2.07	1.88	18	462	1,500	2,971	2,476	-
Mosul Bank	BMFI	202,000	168	0.82	165,640	138.0	-4%	0.87	0.82	18	354	1,290	1,089	908	-
Al-Mansour Bank	BMNS	236,000	197	1.19	280,840	234.0	-3%	1.23	1.18	18	248	396	474	395	-
National Bank of Iraq***	BNOI	152,000	127	0.82	124,640	103.9	-2%	0.88	0.82	13	30	55	46	38	-
North Bank	BNOR	210,000	175	2.70	567,000	472.5	6%	2.75	2.52	16	241	847	2,210	1,842	-
Credit Bank of Iraq***	BROI	150,000	125	2.35	352,500	293.8	-	2.54	2.25	10	76	64	155	129	-
Sumer Commercial Bank	BSUC	151,000	126	1.07	161,570	134.6	5%	1.07	0.97	10	134	28,098	30,064	25,053	-
United Bank	BUND	250,000	208	1.82	455,000	379.2	-1%	1.87	1.75	18	432	17,493	32,104	26,753	-
Union Bank	BUOI	100,000	83	1.05	105,000	87.5	2%	1.10	0.95	12	31	108	113	94	-
Total		3,365,800	2,805		4,873,166	4,061.0					7,299	66,144	92,200	76,833	
Insurance Sector															
AHliya For Insurance	NAHF	2,500	2	0.90	2,250	1.9	-1%	0.91	0.90	1	1	0	0	0	-
Al-Ameen for Insurance	NAME	2,000	2	1.00	2,000	1.7	-5%	1.02	0.98	8	25	17	17	14	-
Dar Al-Salam for Insurance	NDSA	2,420	2	2.10	5,082	4.2	-	2.10	2.10	1	2	0	1	0	-
Gulf Ins.&Reins.	NGIR	2,000	2	0.90	1,800	1.5	-2%	0.92	0.81	8	31	54	48	40	-
Al-Hamraa for Insurance (NR)	NHAM	3,000	3	1.14	3,420	2.9	-	1.14	1.14	-	-	-	-	-	-
Total		11,920	9.9		14,552	12.1					59	72	67	55	
Investment Sector															
Al-Ameen Financial Inv. (NR)	VAMF	750	1	0.66	495	0.4	-	0.66	0.66	-	-	-	-	-	-
Al-Ayaam Financial Inv. (NR)	VAYF	400	0	0.62	248	0.2	-	0.62	0.62	-	-	-	-	-	-
AL- Batek Investment(NR)	VBAT	1,000	1	0.90	900	0.8	-	0.90	0.90	-	-	-	-	-	-
Al-Khaima Financial Inv.*** (NR)	VKHA	460	0	0.87	400	0.3	-	0.87	0.87	-	-	-	-	-	-
Al-Khair for Financial Inv. (NR)	VKHF	7,000	6	0.32	2,240	1.9	-	0.32	0.32	-	-	-	-	-	Suspend/ISC
Mesopotamia Investment(NR)	VMES	1,000	1	0.90	900	0.8	-	0.90	0.90	-	-	-	-	-	-
AL-Wiaam for Financial Inv.	VWIF	2,000	2	1.59	3,180	2.7	1%	1.60	1.57	7	13	2	3	3	-
Al-Zawraa for Financial Inv.	VZAF	1,150	1	1.29	1,484	1.2	-	1.29	1.29	-	-	-	-	-	-
Total		13,760	11.5		9,847	8.2					13	2	3	3	

Source: RS, ISX

Monthly Transactions (January, 2013)

ISX Code	Paid-in Capital		Closing*	Market Cap*		Monthly Chg(%)	Intra Month Closings		Trading Days	No of trans. (#)	No of traded shares (mn)	Monthly Turnover		Note
	(IQD mn)	(\$ mn)	Price (IQD)	(IQD mn)	(\$ mn)		High	Low				(IQD mn)	('000 \$)	
Services Sector														
Al-Ameen Estate Inv.(NR)	SAEI	6,960	6	2.91	20,254	16.9	-	2.91	2.91	-	-	-	-	-
AL-Badia for General Trans	SBAG	1,800	2	5.20	9,360	7.8	-5%	5.50	5.15	12	53	6	32	27
Baghdad Motor Cars Servicing	SBMC	1,080	1	1.69	1,825	1.5	-	1.69	1.69	-	-	-	-	Suspend/ISC
Baghdad Al-Iraq for Gen. Transport.***	SBPT	200	0	39.00	7,800	6.5	-7%	42.00	39.00	9	42	1	47	39
Iraqi for General Transp.	SIGT	1,500	1	7.21	10,815	9.0	-	7.21	7.21	-	-	-	-	Suspend/ISC
Iraqi Land Transport	SILT	10,000	8	5.28	52,800	44.0	-4%	4.11	3.77	9	723	270	1,466	1,222
Kharkh Tour Amuzement City	SKTA	230	0	9.50	2,185	1.8	-14%	11.00	9.25	11	47	3	26	22
Al-Mosul for Funfairs	SMOF	400	0	17.75	7,100	5.9	-1%	17.99	17.50	4	11	1	9	7
Mamoura Realestate Inv.***	SMRI	15,010	13	3.90	58,539	48.8	1%	3.90	3.80	18	446	298	1,141	951
AL-Nukhba for Construction	SNUC	2,000	2	1.61	3,220	2.7	-4%	1.68	1.61	6	10	2	4	3
Total		39,180	32.7		173,898	144.9					1,332	580	2,725	2,271
Industry Sector														
Baghdad for Packing Materials***	IBPM	1,080	1	2.22	2,398	2.0	-15%	2.60	2.22	7	20	3	6	5
Baghdad Soft Drinks	IBSD	133,000	111	1.48	196,840	164.0	-1%	1.53	1.47	18	386	594	886	739
Electronic Industries	IELI	18,000	15	1.28	23,040	19.2	-	1.28	1.28	-	-	-	-	Suspend/ISC
Fallujah for Construction Mat.	IFCM	2,268	2	4.89	11,091	9.2	22%	6.00	4.35	18	565	123	667	556
Nationality Househ. Furniture	IHFI	1,260	1	0.80	1,008	0.8	-	0.80	0.80	1	4	0	0	0
Al-Hilal Industries	IHLI	12,375	10	0.60	7,425	6.2	-6%	0.67	0.58	9	186	272	173	144
Iraqi for Carton M.&T	IICM	3,795	3	0.82	3,112	2.6	-10%	0.85	0.80	9	11	10	8	7
Iraqi Date Processing&Mark.***	IIDP	19,500	16	1.15	22,425	18.7	3%	1.19	1.05	8	371	559	713	594
Iraqi Engineering Works***	IIEW	1,500	1	2.10	3,150	2.6	-14%	2.45	2.10	11	52	8	16	14
Iraqi For Tufted Carpets	IITC	500	0	4.51	2,255	1.9	-2%	4.60	4.50	6	9	1	2	2
Kirkuk for Producing (NR)	IKFP	744	1	1.40	1,042	0.9	-	1.40	1.40	2	2	2	2	1
Al -Khazer for Construction M.	IKHC	1,100	1	1.70	1,870	1.6	-11%	1.90	1.70	5	10	1	2	2
AL- Kindi of Veterinary Vac.***	IKLV	4,500	4	2.75	12,375	10.3	-13%	3.19	2.75	3	82	37	124	103
Al-Mansour Pharma. Ind.***	IMAP	6,469	5	1.10	7,116	5.9	-9%	1.22	1.10	7	14	6	8	6
Modern Chemical Industries*** (NR)	IMCI	90	0	60.00	5,400	4.5	-	60.00	60.00	-	-	-	-	-
Modern Construction Mat.	IMCM	5,620	5	0.71	3,990	3.3	-12%	0.81	0.70	4	11	10	7	6
Metallic Ind. and Bicycles***	IMIB	7,500	6	1.00	7,500	6.3	-23%	1.30	1.00	4	29	12	12	10
Modern Sewing	IMOS	900	1	3.70	3,330	2.8	4%	3.70	3.56	11	45	7	27	23
Modern Paint Industries	IMPI	9,214	8	2.29	21,099	17.6	-	2.29	2.29	-	-	-	-	Suspend/ISC
National Chemical Industries	INCP	15,188	13	0.86	13,061	10.9	-11%	0.96	0.85	18	172	286	262	219
North Soft Drinks	INSD	41,438	35	0.45	18,647	15.5	-8%	0.51	0.41	17	192	523	251	209
Ready Made Clothes	IRMC	1,500	1	7.00	10,500	8.8	-	7.10	7.00	8	17	2	12	10
The Light Industries	ITLI	16,800	14	0.58	9,744	8.1	-	0.58	0.58	-	-	-	-	Suspend/ISC
Total		304,340	253.6		388,418	323.7					2,178	2,455	3,180	2,650

Source: RS, ISX

Monthly Transactions (January, 2013)

ISX Code	Paid-in Capital		Closing* Price (IQD)	Market Cap*		Monthly Chg(%)	Intra Month Closings		Trading Days	No of trans. (#)	No of traded shares (mn)	Monthly Turnover		Note
	(IQD mn)	(\$ mn)		(IQD mn)	(\$ mn)		High	Low				(IQD mn)	('000 \$)	
Hotels&Tourism Sector														
Ashour Hotel	HASH	376	0	10.50	3,952	3.3	-	10.50	10.50	-	-	-	-	-
Baghdad Hotel	HBAG	3,844	3	8.40	32,290	26.9	-2%	8.60	8.25	12	51	6	54	45
Babylon Hotel	HBAY	1,350	1	26.51	35,789	29.8	-4%	27.50	26.50	12	86	5	136	113
Ishtar Hotels	HISH	1,500	1	25.50	38,250	31.9	-7%	27.51	24.11	10	46	5	134	112
Karbala Hotels***	HKAR	5,000	4	2.45	12,250	10.2	-2%	2.64	2.45	15	116	35	88	74
Al- Mansour Hotel	HMAN	2,923	2	29.95	87,544	73.0	-14%	35.00	29.25	6	20	3	98	82
National for Tourist Invest.	HNTI	3,554	3	20.50	72,856	60.7	6%	21.70	19.10	10	75	7	155	129
Palestine Hotel	HPAL	4,470	4	17.45	78,002	65.0	-	17.45	17.45	-	-	-	-	Suspend/ISC
Al-Sadeer Hotel	HSAD	1,239	1	18.75	23,231	19.4	7%	19.50	17.50	11	47	3	52	43
Tourist Village of Mosul dam	HTVM	40	0	30.50	1,220	1.0	-	30.50	30.50	1	1	0	0	0
Total		24,296	20.2		385,383	321.2					442	65	718	598
Agriculture Sector														
Al-Ahlyia for Agricultural Prod. (NR)	AAHP	575	0	0.95	546	0.5	-	0.95	0.95	1	1	0	0	0
Iraqi Agricultural Prod. Mark. Meat***	AIPM	4,125	3	9.35	38,569	32.1	2%	9.35	8.85	13	83	31	279	233
Iraqi Agricultural Products	AIRP	360	0	11.90	4,284	3.6	22%	11.90	9.75	7	31	2	24	20
Iraqi for Seed Production	AISP	4,000	3	4.25	17,000	14.2	-	4.25	4.25	-	-	-	-	Suspend/ISC
Modern for Animal Production***	AMAP	3,600	3	0.90	3,240	2.7	-1%	0.95	0.88	6	24	49	44	37
Middle East for Prod.- Fish	AMEF	300	0	15.00	4,500	3.8	-6%	15.80	15.00	7	24	0	7	6
Total		12,960	10.8		68,139	56.8					163	83	355	295
Grand Total		3,772,256	3,143.5		5,913,402	4,928					11,486	69,401	99,247	82,706

Source: RS, ISX

*As of 31/01/2013

**Last Fin.:Recently announced financial statements

***When the original shares resume trading, we start using the number of shares that the company will reach after the capital increase with the assumption that the capital increase was reflected to the price of the shares. We use the new capital in calculating Mcap.

Note: "(NR)": These are the companies which are trading in the Non-Regular market (in compliance with Iraq Securities Commission law numbered 132/9 on 20/12/2012). These companies were moved to the secondary market (non-regular) because of the decrease in their trading volume and the number of days that these companies are being traded for. Please note, according to the Regulations of the Secondary Market, in each trading session, the average share price will be calculated for each share. The maximum increase and decrease of +/- 20% will be based on the average price in the previous session. The price should be valid during three effective trading sessions after the listing, and it will be free in the first trading session after capital increasing.

For any inquiries, contact:

Research

Aysegul Ozge Ozgur

aozgur@rs.iq

Tel: +90 539 456 4566

Trading

traders@rs.iq

Tel: +964 (0) 727 002 0407

Info

info@rs.iq

Tel: +964 (770) 650 7007

RS Bloomberg page: <RSIQ>

RS Website: RS.IQ



Rabee Securities (RS), Winner of EMEA Finance magazine's Middle East Banking Awards 2011, "Best Asset Manager & Broker in Iraq".



RS is a proud sponsor of the Iraq Pavilion of Venice Biennale 2011.

Baghdad, HQ

903/14/19

Karada

Baghdad, Iraq

Tel: +964 (727) 002 0407

Erbil

Italian Village offices

Office No: 32

Erbil, Iraq

Tel: +964 (770) 044 6680

Sulaymaniyah

Rand Gallery

Office No: 9, Floor:3

Sulaymaniyah, Iraq

Tel: +964 (770) 651 9944

Tel: +964 53 330 1808

Istanbul Rep. Office

Halaskargazi cad.

No:103/7A

Osmanbey

Istanbul, Turkey

Tel: +90 (212) 219 2524

DISCLAIMER

This publication may not be reproduced, modified, or re-disseminated in whole or in part without the prior written permission of Rabee Securities. The information provided herein is of a general nature and for informational purposes only and is not intended to serve as an offer or solicitation with respect to the purchase or sale of any security, or as a recommendation to adopt any particular trading strategy. Such information is subject to change without prior notice. Although Rabee Securities obtains information from sources it considers reliable, Rabee Securities makes no representations or warranties, express or implied, as to the information's accuracy or completeness. Furthermore, such information may be incomplete or condensed. Rabee Securities, its affiliates, directors, employees, assigns, agents, and successors bear no liability for any errors or omissions in this publication or for any losses arising from the use of or reliance upon this information. This limitation on liability applies to direct, indirect, consequential, special, punitive, or other damages, as well as damages for loss of profits or business interruption. Investors shall bear all responsibility for investment decisions taken on the basis of the contents of this report. Rabee Securities strongly advises potential investors to seek financial guidance when determining whether an investment is appropriate to their needs. All estimates included in this report constitute Rabee Securities' opinion as of the date published on the report and are subject to change without notice.