

RS - Iraq Stock Exchange (ISX) Monthly Report

Rabee Securities (RS**)**

*Website: **RS.IQ***

*Bloomberg page: <**RS.IQ**>*

ISX - Performance

	End of May'13	Chn (m/m)	Chn (ytd)
CBI Auction Price of Iraqi Dinar (IQD)	1166	-	-
RSISX Closing (IQD)	1744	-2%	8%
Mcap of ISX (IQD bn)	12,218	0%	105%
Mcap of ISX (\$ mn)	9,736	1%	96%

	May'13	Chn (m/m)	Chn (y/y)
Trading Vol (IQD bn)	197	189%	127%
Trading Vol (\$ mn)	156	188%	113%
Traded Shares (bn)	136	209%	126%
Number of Transactions ('000)	13	44%	7%
Foreigners' Share in Trading Vol. (%)	6.0%	-4.5ppt	3.3ppt

	5M13	Chn (y/y)
Trading Vol (IQD bn)	2,300	539%
Trading Vol (\$ mn)	1,840	506%
Traded Shares (bn)	502	138%
Number of Transactions ('000)	64	6%
Foreigners' Share in Trading Vol. (%)	39.0%	30.4ppt

	End of Apr.'13	End of May'13
Number of Listed Companies*	84	84

No. of Companies Suspended from Trading due to		
General Assembly	10	6
ISC	5	9
Total Number of Suspended Comp.	15	15
Number of Tradable Companies	69	69

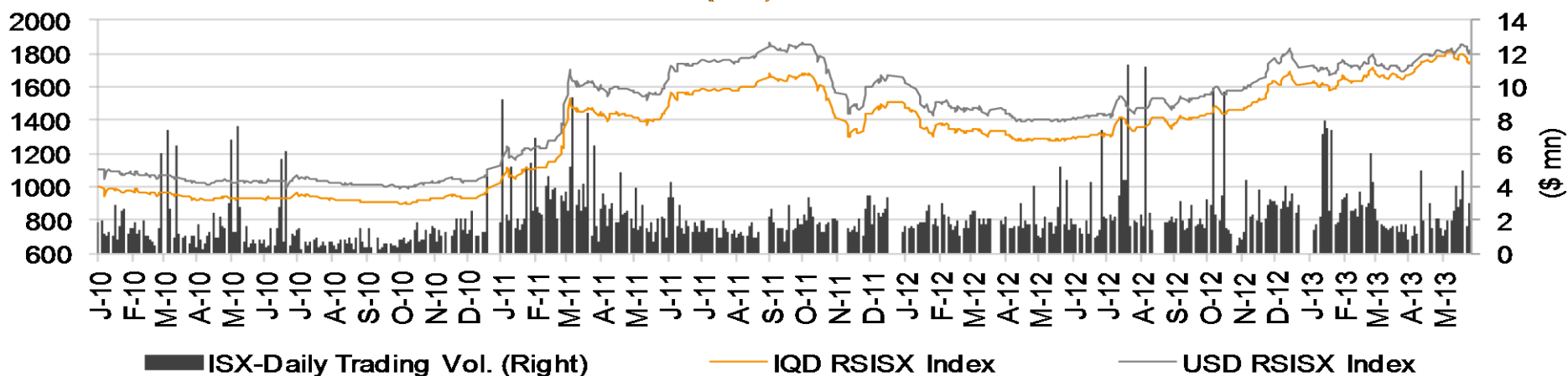
	Apr.'13 (m/m)	May'13 (m/m)
Number of Companies (Price Up)	28	34
Number of Companies (Price Down)	29	26

Source: RS, ISX

*11 of the listed companies are trading in the Non-Regular Market.

RSISX Index

Rabee Securities (RS) Index - RSISX Index

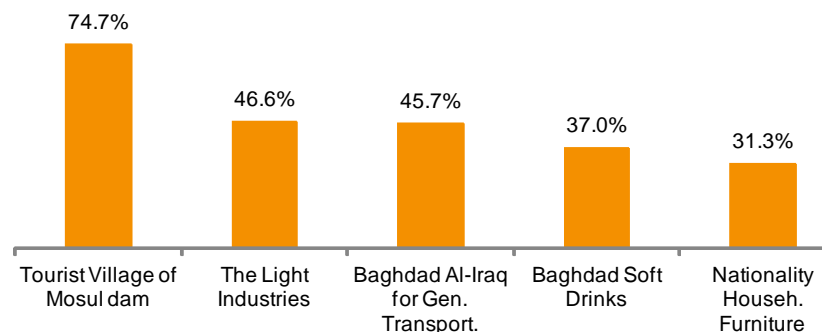


Source: RS, ISX

Top Five (May, 2013)

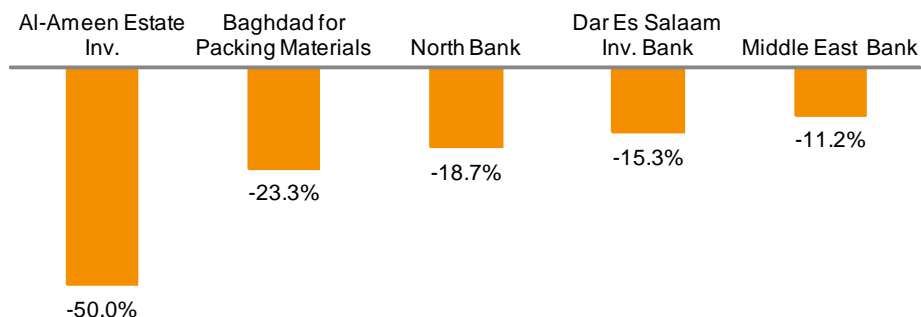
Best Performers

	ISX Code	Closing Price (IQD)*	% Chg. (m/m)
Tourist Village of Mosul dam	HTVM	51.00	74.7%
The Light Industries	ITLI	0.85	46.6%
Baghdad Al-Iraq for Gen. Transport.	SBPT	59.00	45.7%
Baghdad Soft Drinks	IBSD	2.48	37.0%
Nationality Househ. Furniture	IHFI	1.26	31.3%



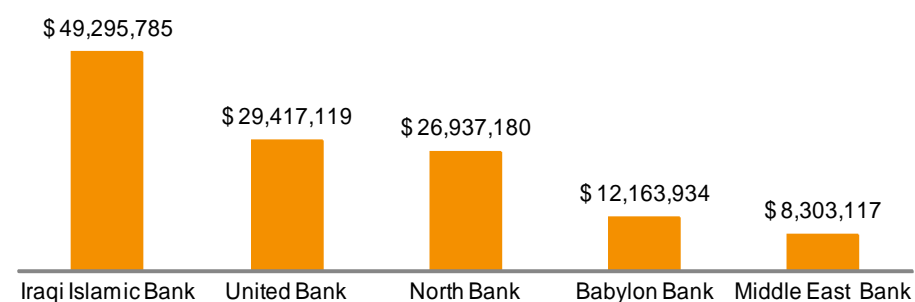
Worst Performers

	ISX Code	Closing Price (IQD)*	% Chg. (m/m)
Al-Ameen Estate Inv.	SAEI	1.25	-50.0%
Baghdad for Packing Materials	IBPM	2.30	-23.3%
North Bank	BNOR	2.05	-18.7%
Dar Es Salaam Inv. Bank	BDSI	2.50	-15.3%
Middle East Bank	BIME	1.43	-11.2%



Top 5 Trading Volume

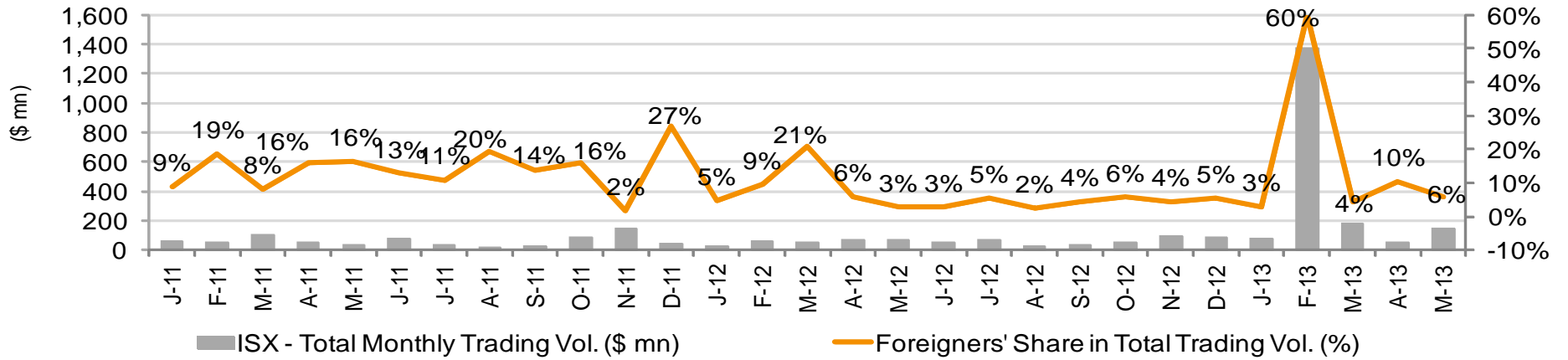
	ISX Code	Trading Vol. (\$)/m	Share in total T. Volume
Iraqi Islamic Bank	BIIB	49,295,785	31.7%
United Bank	BUND	29,417,119	18.9%
North Bank	BNOR	26,937,180	17.3%
Babylon Bank	BBAY	12,163,934	7.8%
Middle East Bank	BIME	8,303,117	5.3%



*As of 30/05/2013

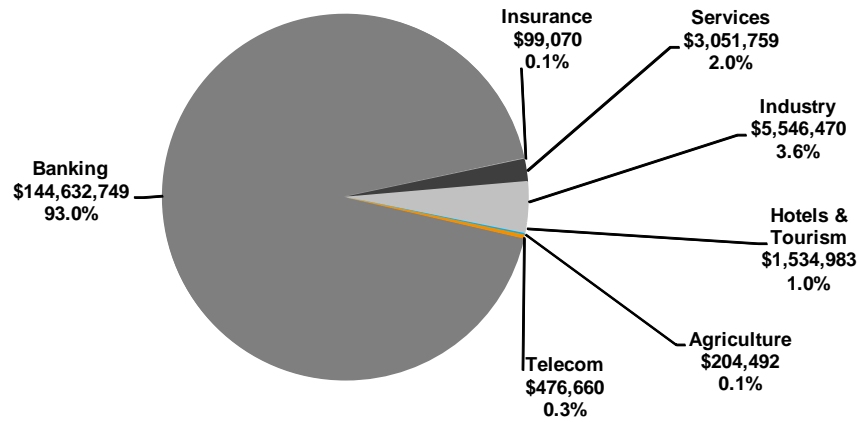
Note: SAEI is trading in the Non-Regular Market.

ISX - Total Monthly Trading Volume (\$ mn) & Foreigners' Share in Total Trading Vol. (%)



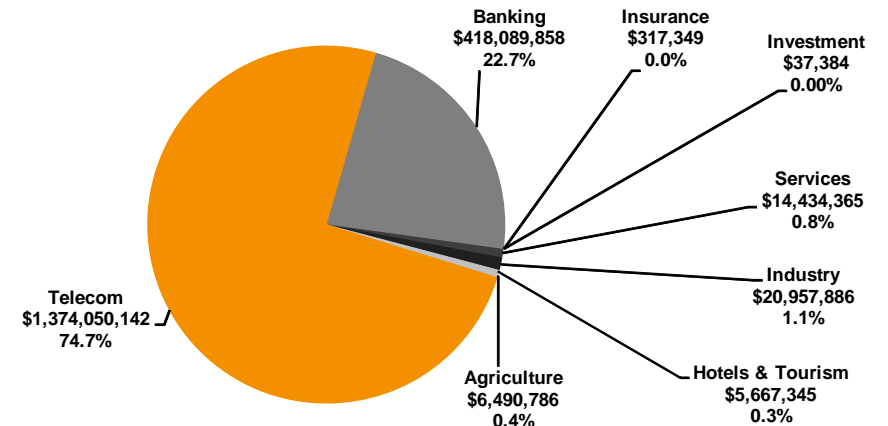
Source: RS, ISX

Breakdown of May 2013 Trading Volume



Source: RS, ISX

Breakdown of Total Trading Volume in the first 5 Months of 2013



Source: RS, ISX

Recent Corporate Actions

Dar Al-Salam for Insurance***	NDSA	13.05.2013	23.05.2013	-	-	19.8%	2.42	2.90	2.90	-
Mosul Dam Tourist Village	HTVM	22.05.2013	-	-	300.0%	200.0%	0.04	0.20	0.04	-
Mamoura Realestate Inv.	SMRI	20.05.2013	-	-	-	-	-	-	15.01	-
Mosul Bank	BMFI	19.05.2013	-	-	17.3%	7.4%	202.00	252.00	202.00	-
Al-Hilal Industries	IHLI	02.05.2013	16.05.2013	-	-	-	-	-	12.38	-
Asiacell Communications PJSC	TASC	15.05.2013	-	-	-	-	-	-	270.01	200.0%
Al-Ameen for Insurance	NAME	28.04.2013	13.05.2013	-	-	-	-	-	2.00	-
Bain Al-Nahrain Financial Inv.(NR)	VMES	22.04.2013	09.05.2013	-	-	-	-	-	1.00	-
Baghdad Soft Drinks	IBSD	25.04.2013	07.05.2013	-	-	-	-	-	133.00	10.0%
Iraqi for Seed Production***	AISP	08.04.2013	06.05.2013	-	-	20.0%	4.00	4.80	4.80	-
Kharkh Tour Amuzement City***	SKTA	22.04.2013	06.05.2013	-	-	60.0%	0.24	0.37	0.37	-
Modern Paint Industries	IMPI	17.04.2013	05.05.2013	-	-	-	-	-	9.21	-
Elaf Islamic Bank***	BELF	10.03.2013	23.04.2013	-	32.1%	19.9%	100.00	152.00	152.00	-
Al-Mansour Pharma. Ind.	IMAP	07.04.2013	23.04.2013	-	-	-	-	-	6.47	-
North Bank***	BNOR	31.03.2013	14.04.2013	-	-	26.2%	210.00	265.00	265.00	-
Al-Ayaam Financial Inv. (NR)	VAYF	14.04.2013	-	-	-	-	-	-	0.40	-
Economy Bank	BEFI	13.09.2012	08.10.2012	07.04.2013	41.0%	9.0%	100.00	150.00	150.00	-
Al-Hamraa for Insurance (NR)	NHAM	12.11.2012	28.11.2012	07.04.2013	-	50.0%	2.00	3.00	3.00	-
Baghdad Passengers Transport	SBPT	06.11.2012	06.12.2012	28.03.2013	-	25.0%	0.16	0.20	0.20	-
AL- Batek Investment (NR)	VBAT	25.02.2013	28.03.2013	-	-	-	-	-	1.00	-
Iraqi Agricultural Prod. Mark. Meat	AIPM	03.10.2012	04.11.2012	19.03.2013	-	10.0%	3.75	4.125	4.13	-
Modern Chemical Industries(NR)	IMCI	26.06.2012	12.07.2012	18.03.2013	-	20.0%	0.08	0.09	0.09	-
AL-Badia for General Trans***	SBAG	27.02.2013	14.03.2013	-	-	11.1%	1.80	2.00	2.00	-
Ishtar Hotels	HISH	26.02.2013	13.03.2013	-	-	-	-	-	1.50	-
Iraqi Engineering Works	IIEW	24.09.2012	08.10.2012	13.03.2013	20.0%	30.0%	1.00	1.50	1.50	-
Al-Mansour Bank***	BMNS	17.02.2013	11.03.2013	-	2.0%	3.9%	236.00	250.00	250.00	-
Al-Khaima Financial Inv.(NR)	VKHA	10.10.2012	20.11.2012	11.03.2013	-	15.0%	0.40	0.46	0.46	-
Commercial Bank of Iraq ***	BCOI	17.10.2012	10.03.2013	-	50.0%	-	100.00	150.00	150.00	7.5%

Source: RS, ISX

*If there is a capital increase, this date shows the date when original shares resumed trading.

**Paid-in Capital AFTER the increase shows the capital the company reached / will reach after the completion of the capital increase processes.

***When the original shares resume trading, we start using the number of shares that the company will reach after the capital increase with the assumption that the capital increase was reflected to the price of the shares.

Capital Increase and Cash Dividend Distribution Processes:

The first step in any capital increase or dividend distribution is announcing a General Assembly meeting. All companies have to announce that it will hold its General Assembly meeting 15 days prior to the meeting date. Shares are normally suspended from trading one week before any General Assembly meeting (Please note that the ex-date for capital increases and dividend distributions is referred to as "Trading-Suspension day"). Once a company's General Assembly meets, they vote on the capital increase percentage and how they will raise this amount (bonus/rights). General Assemblies also vote on the percentage of cash dividend distribution. When a company decides to increase its capital through a rights issue, they invite investors to subscribe for the newly offered shares. Subscription period is normally 30 days (the first 15 days is for the existing shareholders, the second 15 days for everyone else). The Iraqi Company Registrar has to approve the capital increase (in both cases, bonus and rights issue). For cash dividend distribution, most companies decide to distribute cheques with the cash dividend amount and shareholders can go to a specified location to receive these cheques, usually banks. There is not strict timeline for this procedure; therefore, the process could take long time.

ISX Companies which are not trading due to General Assembly Meetings*

Company Name	ISX Code	Suspended from Trading	GA Date	Rights issue (%)	Bonus issue (%)	Paid-in Capital BEFORE the increase (IQD bn)	Paid-in Capital AFTER the increase (IQD bn)
Banking Sector							
Dijlah & Furat Bank	BDFD	19.05.2011	12.04.2012	200.0%	-	100.0	300.0
Mosul Bank	BMFI	19.05.2013	26.05.2013	17.3%	7.4%	202.0	252.0
Sumer Commercial Bank	BSUC	18.02.2013	25.02.2013	-	-	151.0	n.a
Hotels&Tourism Sector							
Tourist Village of Mosul dam	HTVM	22.05.2013	29.05.2013	200.0%	300.0%	0.04	0.20
Services Sector							
Mamoura Realestate Inv.	SMRI	20.05.2013	27.05.2013	-	-	15.0	15.0
Telecom Sector							
Asiacell Communication PJSC	TASC	15.05.2013	22.05.2013	-	-	270.0	270.0

*As of 30/05/2013

Source: RS, ISX

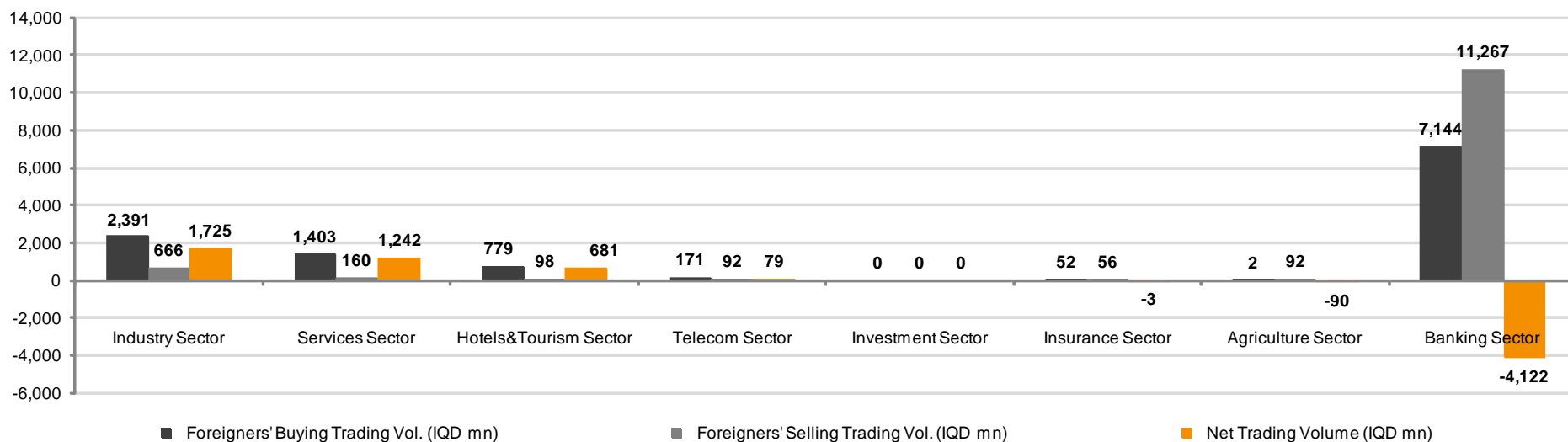
ISX Companies which are not trading due to Iraqi Securities Commission's (ISC) Decision*

Company Name / Sector Name	ISX Code	Suspended from Trading	Company Name / Sector Name	ISX Code	Suspended from Trading
Banking Sector			Services Sector		
Elaf Islamic Bank	BELF	15.05.2013	Baghdad Motor Cars Servicing	SBMC	05.08.2012
Hotels&Tourism Sector			Iraqi for General Transp.	SIGT	05.08.2012
Palestine Hotel	HPAL	09.08.2011	Investment Sector		
Industry Sector			Al-Ayaam Financial Inv.	VAYF	15.05.2013
Iraqi Date Processing & Mark.	IIDP	04.04.2013	Al-KHaima Financial Inv.	VKHA	15.05.2013
Kirkuk for Producing	IKFP	23.04.2013			
Al -Khazer for Construction Mat.	IKHC	09.05.2013			

*As of 30/05/2013

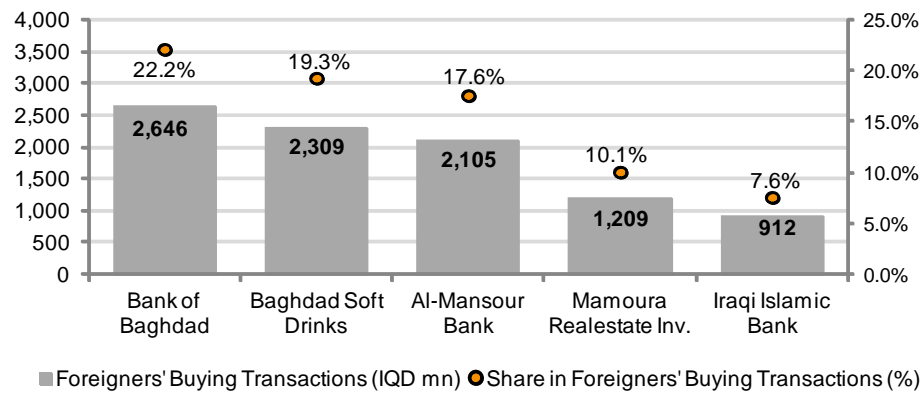
Source: RS, ISX

Foreigners' Transactions* (Ranked According to Net Trading Volumes) - May, 2013

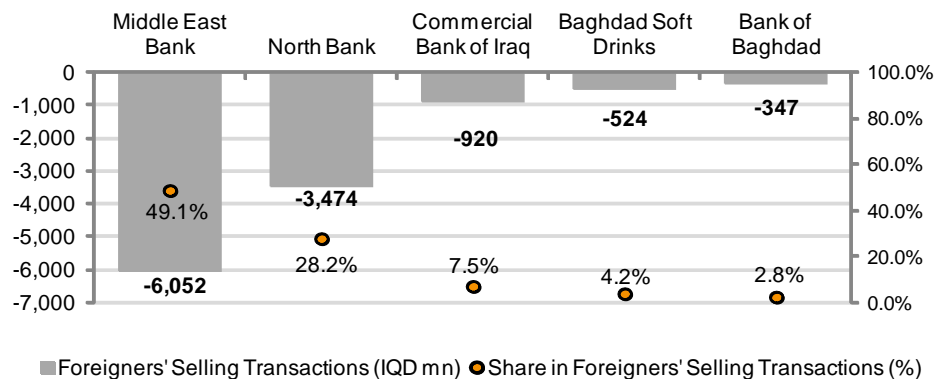


Source: RS, ISX
*Excluding Non-Regular Market

Top Five Companies according to Foreigners' Buying and Selling Transactions* (May, 2013)



*Excluding Non-Regular Market



*Excluding Non-Regular Market

Foreigners' Buying Transactions* (May, 2013)

Company Name	ISX Code	No. of Trans	No. of Traded Shares	Trading Volume (IQD)	Trading Volume (\$)
Banking Sector					
Ashur International Bank	BASH	1	200,000	178,000	140
Babylon Bank	BBAY	3	600,000	470,000	370
Bank of Baghdad	BBOB	294	1,314,379,382	2,646,336,423	2,084,433
Commercial Bank of Iraq	BCOI	33	275,874,556	267,454,690	210,665
Dar Es Salaam Inv. Bank	BDSI	2	358,400	1,044,112	822
Economy Bank	BEFI	2	400,000	394,000	310
Elaf Islamic Bank	BELF	3	1,100,000	946,000	745
Gulf Commercial Bank	BGUC	13	50,605,859	66,037,675	52,016
Investment Bank of Iraq	BIBI	90	371,048,621	446,693,174	351,846
Iraqi Islamic Bank	BIBB	9	701,750,000	912,205,000	718,514
Middle East Bank	BIME	26	118,429,639	178,262,526	140,412
Kurdistan Int. Bank	BKUI	28	84,000,000	198,234,000	156,142
Mosul Bank	BMFI	5	77,347,113	65,847,344	51,866
Al-Mansour Bank	BMNS	290	1,713,600,744	2,104,903,716	1,657,964
National Bank of Iraq	BNOI	5	10,562,101	8,454,681	6,659
North Bank	BNOR	15	14,500,000	36,160,000	28,482
Credit Bank of Iraq	BRIO	83	73,910,498	208,908,384	164,550
United Bank	BUND	3	600,000	1,016,000	800
Union Bank	BUOI	3	600,000	656,000	517
TOTAL		908	4,809,866,913	7,144,201,725	5,627,255
Insurance Sector					
Al-Ameen for Insurance	NAME	1	32,420,016	32,420,016	25,536
Dar Al-Salam for Insurance	NDSA	1	8,404,469	19,750,502	15,557
TOTAL		2	40,824,485	52,170,518	41,093
Services Sector					
AL-Badia for General Trans	SBAG	37	8,772,478	48,712,558	38,369
Iraqi Land Transport	SILT	39	48,118,041	140,237,499	110,461
Mamoura Real Estate Inv.	SMRI	104	321,513,805	1,208,716,081	952,066
AL-Nukhba for Construction	SNUC	5	3,450,000	4,941,000	3,892
TOTAL		185	381,854,324	1,402,607,138	1,104,788
Industry Sector					
Baghdad for Packing Materials	IBPM	1	200,000	600,000	473
Baghdad Soft Drinks	IBSD	343	994,057,303	2,309,229,392	1,818,905
Electronic Industries	IELI	1	200,000	298,000	235
Fallujah for Construction Mat.	IFCM	17	6,093,939	30,179,498	23,771
Nationality Househ. Furniture	IHFI	8	2,000,000	2,313,547	1,822
Al-Hilal Industries	IHLI	2	2,000,000	1,280,000	1,008
Iraqi for Carton M.&T	IICM	3	400,000	332,992	262
AL-Kindi of Veterinary Vac.	IKLV	12	10,200,000	31,620,000	24,906
Al-Mansour Pharma. Ind.	IMAP	2	400,000	416,000	328
Modern Construction Mat.	IMCM	3	500,000	360,000	284
Metallic Ind. and Bicycles	IMIB	1	200,000	192,000	151
Modern Sewing	IMOS	2	200,000	780,000	614
Modern Paint Industries	IMPI	2	7,163,504	9,739,095	7,671
National Chemical Industries	INCP	2	347,668	281,611	222
North Soft Drinks	INSD	4	800,000	334,000	263
The Light Industries	ITLI	9	3,700,000	3,276,000	2,580
TOTAL		412	1,028,462,414	2,391,232,135	1,883,496
Hotels&Tourism Sector					
Babylon Hotel	HBAY	1	1,350,000	37,111,500	29,232
Ishtar Hotels	HISH	108	24,216,533	741,529,273	584,078
TOTAL		109	25,566,533	778,640,773	613,310
Agriculture Sector					
Iraqi Agricultural Products	AIRP	2	100,000	1,242,500	979
Iraqi for Seed Production	AISP	1	100,000	565,000	445
TOTAL		3	200,000	1,807,500	1,424
Telecom Sector					
Asiacell	TASC	30	7,760,105	170,971,705	134,669
TOTAL		30	7,760,105	170,971,705	134,669
GRAND TOTAL		1649	6,294,534,774	11,941,631,493	9,406,034

Source: RS, ISX

*Excluding Non-Regular Market

Foreigners' Selling Transactions* (May, 2013)

Company Name	ISX Code	No. of Trans	No. of Traded Shares	Trading Volume (IQD)	Trading Volume (\$)
Banking Sector					
Ashur International Bank	BASH	1	100,000	89,000	70
Babylon Bank	BBAY	1	100,000	81,000	64
Bank of Baghdad	BBOB	23	178,525,439	346,738,352	273,114
Commercial Bank of Iraq	BCOI	157	932,548,117	920,118,513	724,747
Economy Bank	BEFI	8	7,050,000	6,919,000	5,450
Gulf Commercial Bank	BGUC	24	137,447,219	179,830,329	141,646
Investment Bank of Iraq	BIBI	2	4,980,732	5,927,071	4,669
Middle East Bank	BIME	548	4,011,538,739	6,052,018,425	4,766,977
Kurdistan Int. Bank	BKUI	2	30,200,000	71,272,000	56,139
Al-Mansour Bank	BMNS	2	80,633,334	99,989,334	78,758
North Bank	BNOR	298	1,582,550,589	3,474,273,902	2,736,572
United Bank	BUND	11	20,465,525	34,244,840	26,974
Union Bank	BUOI	11	70,000,000	75,020,000	59,091
TOTAL		1,088	7,056,139,694	11,266,521,766	8,874,272
Insurance Sector					
Al-Ameen for Insurance	NAME	1	32,420,016	32,420,016	25,536
Dar Al-Salam for Insurance	NDSA	1	8,404,469	19,750,502	15,557
Gulf Ins.&Reins.	NGIR	4	4,300,000	3,440,000	2,710
TOTAL		6	45,124,485	55,610,518	43,803
Services Sector					
Mamoura Real Estate Inv.	SMRI	13	43,085,677	160,431,846	126,367
TOTAL		13	43,085,677	160,431,846	126,367
Industry Sector					
Baghdad Soft Drinks	IBSD	19	218,574,100	523,600,265	412,423
Al-Hilal Industries	IHLI	1	100,000	65,000	51
Iraqi for Carton M.&T	IICM	1	100,000	93,000	73
Al-Mansour Pharma. Ind.	IMAP	1	200,000	208,000	164
Modern Sewing	IMOS	1	200,000	760,000	599
Modern Paint Industries	IMPI	82	88,381,707	119,023,991	93,751
National Chemical Industries	INCP	1	100,000	92,000	72
North Soft Drinks	INSD	1	200,000	82,000	65
The Light Industries	ITLI	8	22,193,044	22,254,718	17,529
TOTAL		115	330,048,851	666,178,975	524,727
Hotels&Tourism Sector					
Babylon Hotel	HBAY	1	1,350,000	37,111,500	29,232
Ishtar Hotels	HISH	2	2,012,440	60,572,578	47,711
TOTAL		3	3,362,440	97,684,078	76,943
Telecom Sector					
Asiacell	TASC	7	4,158,000	91,501,500	72,073
TOTAL		7	4,158,000	91,501,500	72,073
GRAND TOTAL		1232	7,481,919,147	12,337,928,682	9,718,184

Source: RS, ISX

*Excluding Non-Regular Market

Monthly Transactions (May, 2013)

ISX Code	Paid-in Capital (IQD mn)	Closing* Price (IQD)	Market Cap* (IQD mn)	Monthly Chg(%)	Intra Month Closings High	Low	Trading Days	No of trans. (#)	No of traded shares (mn)	Monthly Turnover (IQD mn)	Monthly Turnover ('000 \$)	Note			
Telecom Sector															
Asiacell Communications PJSC	TASC	270,012	213	22.10	5,967,265	4,700.2	0%	22.20	22.00	8	107	27	605	477	Suspend/GA
Total		270,012	213		5,967,265	4,700					107	27	605	477	
Banking Sector															
Ashur International Bank	BASH	150,000	118	0.84	126,000	99.2	-6%	0.90	0.81	12	71	465	412	325	-
Babylon Bank***	BBAY	150,000	118	0.73	109,500	86.2	-	0.81	0.72	19	325	19,851	15,443	12,164	-
Bank of Baghdad	BBOB	175,000	138	2.00	350,000	275.7	9%	2.15	1.89	21	977	3,300	6,636	5,227	-
Commercial Bank of Iraq ***	BCOI	150,000	118	0.95	142,500	112.2	-5%	1.03	0.95	21	333	1,378	1,364	1,074	-
Dijlah & Furat Bank	BDFD	50,000	39	0.85	42,500	33.5	-	0.85	0.85	-	-	-	-	-	Suspend/GA
Dar Es Salaam Inv. Bank	BDSI	105,800	83	2.50	264,500	208.3	-15%	2.96	2.48	18	143	98	268	211	-
Economy Bank	BEFI	150,000	118	0.98	147,000	115.8	-3%	1.00	0.94	12	80	115	111	87	-
Elaf Islamic Bank***	BELF	152,000	120	0.86	130,720	103.0	-4%	0.90	0.86	3	12	8	6	5	Suspend/ISC
Gulf Commercial Bank	BGUC	125,000	98	1.26	157,500	124.1	-2%	1.34	1.26	21	357	1,014	1,328	1,046	-
Investment Bank of Iraq	BIBI	155,000	122	1.19	184,450	145.3	5%	1.25	1.16	21	505	7,073	8,344	6,573	-
Iraqi Islamic Bank	BIIB	152,000	120	1.38	209,760	165.2	10%	1.38	1.23	15	102	47,644	62,585	49,296	-
Iraqi Middle East Bank	BIME	150,000	118	1.40	210,000	165.4	-11%	1.60	1.40	21	1,320	6,953	10,541	8,303	-
Kurdistan Int. Bank	BKUI	300,000	236	2.25	675,000	531.7	-10%	2.47	2.21	17	89	128	302	238	-
Mosul Bank	BMFI	202,000	159	0.86	173,720	136.8	-3%	0.94	0.86	11	390	1,115	1,013	798	Suspend/GA
Al-Mansour Bank***	BMNS	250,000	197	1.25	312,500	246.1	16%	1.29	1.08	19	492	2,135	2,616	2,060	-
National Bank of Iraq ***	BNOI	152,000	120	0.78	118,560	93.4	-1%	0.82	0.78	18	65	62	49	39	-
North Bank***	BNOR	265,000	209	2.05	543,250	427.9	-19%	2.53	2.05	21	709	15,255	34,199	26,937	-
Credit Bank of Iraq***	BROI	150,000	118	3.00	450,000	354.5	17%	3.15	2.61	14	122	93	264	208	-
Sumer Commercial Bank	BSUC	151,000	119	1.02	154,020	121.3	-	1.02	1.02	-	-	-	-	-	Suspend/GA
United Bank	BUND	250,000	197	1.59	397,500	313.1	-10%	1.75	1.58	21	402	21,959	37,347	29,417	-
Union Bank	BUOI	152,000	120	1.23	186,960	147.3	18%	1.23	1.05	18	218	703	793	625	-
Total		3,536,800	2,786		5,085,940	4,006.0					6,712	129,348	183,622	144,633	

Source: RS, ISX

Monthly Transactions (May, 2013)

Industry Sector	ISX Code	Paid-in Capital (IQD mn)	Closing* (\$ mn)	Closing* Price (IQD)	Market Cap* (IQD mn)	Market Cap* (\$ mn)	Monthly Chg(%)	Intra Month High	Closings Low	Trading Days	No of trans. (#)	No of traded shares (mn)	Monthly Turnover (IQD mn)	Monthly Turnover ('000 \$)	Note
Baghdad for Packing Materials***	IBPM	1,080	1	2.35	2,538	2.0	-23%	3.06	2.30	13	68	12	34	27	-
Baghdad Soft Drinks	IBSD	133,000	105	2.49	331,170	260.9	37%	2.53	1.81	18	866	1,559	3,564	2,807	-
Electronic Industries	IELI	18,000	14	1.45	26,100	20.6	7%	1.48	1.39	21	279	242	348	274	-
Fallujah for Construction Mat.	IFCM	2,268	2	4.85	11,000	8.7	-2%	5.10	4.70	17	57	16	78	61	-
Nationality Househ. Furniture	IHFI	1,260	1	1.26	1,588	1.3	31%	1.26	0.96	8	21	6	7	5	-
Al-Hilal Industries	IHLI	12,375	10	0.68	8,415	6.6	23%	0.69	0.53	11	279	356	236	186	-
Iraqi for Carton Manufact. and Trading	IICM	3,795	3	0.82	3,112	2.5	11%	0.93	0.72	12	126	71	59	46	-
Iraqi Date Processing&Mark.***	IIDP	17,250	14	1.21	20,873	16.4	-	1.21	1.21	-	-	-	-	-	Suspend/ISC
Iraqi Engineering Works	IIEW	1,500	1	1.65	2,475	1.9	-4%	1.73	1.65	13	71	23	39	30	-
Iraqi For Tufted Carpets	IITC	500	0	4.50	2,250	1.8	-8%	4.91	4.40	10	47	4	18	15	-
Kirkuk for Producing (NR)	IKFP	744	1	1.00	744	0.6	-	1.00	1.00	-	-	-	-	-	Suspend/ISC
Al -Khazer for Construction M.	IKHC	1,100	1	1.61	1,771	1.4	-	1.61	1.61	-	-	-	-	-	Suspend/ISC
AL- Kindi of Veterinary Vac.***	IKLV	4,500	4	2.99	13,455	10.6	-4%	3.16	2.99	18	101	46	141	111	-
Al-Mansour Pharma. Ind.	IMAP	6,469	5	1.02	6,599	5.2	-	1.07	1.02	19	281	384	402	317	-
Modern Chemical Industries(NR)	IMCI	90	0	60.00	5,400	4.3	-	60.00	60.00	1	2	1	32	26	-
Modern Construction Mat.	IMCM	5,620	4	0.78	4,384	3.5	5%	0.78	0.71	5	14	5	3	3	-
Metallic Ind. and Bicycles***	IMIB	7,500	6	0.89	6,675	5.3	5%	0.95	0.85	11	67	39	36	29	-
Modern Sewing	IMOS	900	1	3.90	3,510	2.8	4%	3.90	3.80	10	31	4	17	13	-
Modern Paint Industries	IMPI	9,214	7	1.30	11,978	9.4	-6%	1.36	1.28	13	141	112	150	118	-
National Chemical Industries	INCP	15,188	12	0.82	12,454	9.8	5%	0.93	0.80	18	265	254	222	175	-
North Soft Drinks	INSD	41,438	33	0.41	16,989	13.4	-	0.43	0.40	21	282	890	368	290	-
Ready Made Clothes	IRMC	1,500	1	7.01	10,515	8.3	-	7.03	7.01	4	11	1	9	7	-
The Light Industries	ITLI	16,800	13	0.86	14,448	11.4	47%	1.02	0.60	21	1,035	1,486	1,277	1,006	-
Total		302,090	237.9		518,441	408.4					4,044	5,508	7,042	5,546	
Hotels&Tourism Sector															
Ashour Hotel	HASH	376	0	9.25	3,481	2.7	2%	9.50	9.10	4	8	1	7	5	-
Baghdad Hotel	HBAG	3,844	3	9.25	35,557	28.0	6%	9.60	8.80	20	135	21	189	149	-
Babylon Hotel	HBAY	1,350	1	27.15	36,653	28.9	4%	28.50	27.00	16	154	20	537	423	-
Ishtar Hotels	HISH	1,500	1	30.90	46,350	36.5	20%	31.75	26.50	16	137	28	842	663	-
Karbala Hotels***	HKAR	5,000	4	1.79	8,950	7.0	9%	1.80	1.67	13	69	27	48	38	-
Al- Mansour Hotel	HMAN	2,923	2	28.00	81,844	64.5	4%	28.25	27.05	9	22	2	53	42	-
National for Tourist Invest.	HNTI	3,554	3	18.70	66,459	52.3	1%	19.65	18.70	12	62	5	97	77	-
Palestine Hotel	HPAL	4,470	4	17.45	78,002	61.4	-	17.45	17.45	-	-	-	-	-	Suspend/ISC
Al-Sadeer Hotel	HSAD	1,239	1	18.25	22,612	17.8	-	18.30	18.25	4	11	1	25	20	-
Mosul Dam Tourist Village	HTVM	40	0	51.00	2,040	1.6	75%	51.00	28.50	10	64	3	150	118	Suspend/GA
Total		24,296	19.1		381,947	300.8					662	107	1,949	1,535	

Source: RS, ISX

Monthly Transactions (May, 2013)

ISX Code	Paid-in Capital (IQD mn)	Closing* (\$ mn)	Price (IQD)	Market Cap* (IQD mn)	(\$ mn)	Monthly Chg(%)	Intra Month Closings High	Low	Trading Days	No of trans. (#)	No of traded shares (mn)	Monthly Turnover (IQD mn)	('000 \$)	Note	
Services Sector															
Al-Ameen Estate Inv.(NR)	SAEI	6,960	5	1.25	8,700	6.9	-50%	2.50	1.25	5	7	6	8	6	-
AL-Badia for General Trans***	SBAG	2,000	2	5.50	11,000	8.7	6%	5.95	5.00	17	100	15	81	64	-
Baghdad Motor Cars Servicing	SBMC	1,080	1	1.69	1,825	1.4	-	1.69	1.69	-	-	-	-	-	Suspend/ISC
Baghdad Passengers Transport	SBPT	200	0	58.00	11,600	9.1	46%	59.00	40.50	14	98	1	38	30	-
Iraqi for General Transp.	SIGT	1,500	1	7.21	10,815	8.5	-	7.21	7.21	-	-	-	-	-	Suspend/ISC
Iraqi Land Transport ***	SILT	14,000	11	2.82	39,480	31.1	-3%	2.97	2.81	21	301	269	786	619	-
Kharkh Tour Amuzement City***	SKTA	368	0	7.80	2,870	2.3	10%	8.95	7.19	15	132	12	95	75	-
Al-Mosul for Funfairs	SMOF	400	0	19.00	7,600	6.0	9%	19.50	17.40	15	72	4	76	60	-
Mamoura Realestate Inv.	SMRI	15,010	12	3.75	56,288	44.3	-4%	3.85	3.75	12	325	733	2,733	2,153	Suspend/GA
AL-Nukhba for Construction	SNUC	2,000	2	1.28	2,560	2.0	-11%	1.50	1.25	12	85	42	58	46	-
Total		43,518	34.3		152,738	120.3					1,120	1,082	3,874	3,052	
Agriculture Sector															
Al-Ahlyia for Agricultural Prod. (NR)	AAHP	575	0	0.94	541	0.4	-	0.94	0.94	-	-	-	-	-	-
Iraqi Agricultural Prod. Mark. Meat	AIPM	4,125	3	11.80	48,675	38.3	-4%	12.25	11.80	15	79	11	133	105	-
Iraqi Agricultural Products	AIRP	360	0	12.65	4,554	3.6	4%	12.65	12.15	4	8	1	6	5	-
Iraqi for Seed Production***	AISP	4,800	4	5.25	25,200	19.8	4%	5.70	4.50	18	200	22	112	88	-
Modern for Animal Production***	AMAP	3,600	3	0.85	3,060	2.4	2%	0.85	0.83	4	13	6	5	4	-
Middle East for Prod.- Fish	AMEF	300	0	12.00	3,600	2.8	-4%	13.20	11.50	10	15	0	2	2	-
Total		13,760	10.8		85,630	67.4					315	40	260	204	
Insurance Sector															
AHliya For Insurance	NAHF	2,500	2	0.81	2,025	1.6	-10%	0.90	0.80	3	11	43	35	28	-
Al-Ameen for Insurance	NAME	2,000	2	1.40	2,800	2.2	26%	1.45	1.00	8	31	55	60	47	-
Dar Al-Salam for Insurance***	NDSA	2,900	2	2.01	5,832	4.6	3%	2.01	1.96	4	4	9	21	16	-
Gulf Insurance&Reinsurance	NGIR	2,000	2	0.83	1,660	1.3	-6%	0.85	0.80	4	8	12	10	8	-
Al-Hamraa for Insurance (NR)	NHAM	3,000	2	1.14	3,420	2.7	-	1.14	1.14	-	-	-	-	-	-
Total		12,400	9.8		15,737	12.4					54	120	126	99	

Source: RS, ISX

Monthly Transactions (May, 2013)

	ISX Code	Paid-in Capital (IQD mn)	(\$ mn)	Closing* Price (IQD)	Market Cap* (IQD mn)	(\$ mn)	Monthly Chg(%)	Intra Month Closings High	Low	Trading Days	No of trans. (#)	No of traded shares (mn)	Monthly Turnover (IQD mn)	('000 \$)	Note
Investment Sector															
Al-Ameen Financial Inv. (NR)	VAMF	750	1	0.66	495	0.4	-	0.66	0.66	-	-	-	-	-	-
Al-Ayaam Financial Inv. (NR)	VAYF	400	0	0.62	248	0.2	-	0.62	0.62	-	-	-	-	-	Suspend/ISC
AL- Batek Investment (NR)	VBAT	1,000	1	0.90	900	0.7	-	0.90	0.90	-	-	-	-	-	-
Al-Khaima Financial Inv.(NR)	VKHA	460	0	0.87	400	0.3	-	0.87	0.87	-	-	-	-	-	Suspend/ISC
Al-Khair for Financial Inv. (NR)	VKHF	7,000	6	0.42	2,940	2.3	-	0.42	0.42	-	-	-	-	-	-
Bain Al-Nahrain Financial Inv.(NR)	VMES	1,000	1	0.90	900	0.7	-	0.90	0.90	-	-	-	-	-	-
AL-Wiaam for Financial Inv.	VWIF	2,000	2	1.60	3,200	2.5	-	1.60	1.60	1	1	0	-	-	-
Al-Zawraa for Financial Inv.	VZAF	1,150	1	1.11	1,277	1.0	-	1.11	1.11	-	-	-	-	-	-
Total		13,760	10.8		10,360	8.2					1	0	0	0	
Grand Total		4,216,636	3,321		12,218,057	9,624					13,015	136,233	197,477	155,546	

Source: RS, ISX

*As of 30/05/2013

**Last Fin.: Recently announced financial statements

***When the original shares resume trading, we start using the number of shares that the company will reach after the capital increase with the assumption that the capital increase was reflected to the price of the shares. We use the new capital in calculating Mcap.

Note: "(NR)": These are the companies which are trading in the Non-Regular market (in compliance with Iraq Securities Commission law numbered 132/9 on 20/12/2012). These companies were moved to the secondary market (non-regular) because of the decrease in their trading volume and the number of days that these companies are being traded for. Please note, according to the Regulations of the Secondary Market, in each trading session, the average share price will be calculated for each share. The maximum increase and decrease of +/- 20% will be based on the average price in the previous session. The price should be valid during three effective trading sessions after the listing, and it will be free in the first trading session after capital increasing.

For any inquiries, contact:

Research

research@rs.iq

Aysegul Ozge Ozgur

aozgur@rs.iq

Tel: +90 539 456 4566

Trading

traders@rs.iq

Tel: +964 (0) 727 002 0407

Info

info@rs.iq

Tel: +964 (790) 133 1492

RS Bloomberg page: <RSIQ>

RS Website: RS.IQ

**TMT FINANCE MIDDLE EAST & NORTH AFRICA
2013 CONFERENCE & AWARDS WINNERS**

**EQUITY CAPITAL MARKETS DEAL OF THE YEAR -
ASIACELL IPO ADVISED BY RABEE SECURITIES**

**WELCOME TO
IRAQ**

RS is a proud sponsor of the Iraq Pavilion of Venice Biennale 2013.



Rabee Securities (RS), Winner of EMEA Finance magazine's Middle East Banking Awards 2011, "Best Asset Manager & Broker in Iraq".

Baghdad, HQ

903/14/19

Karada

Baghdad, Iraq

Tel: +964 (727) 002 0407

Erbil

Italian Village offices

Office No: 32

Erbil, Iraq

Tel: +964 (770) 473 9999

Sulaymaniyah

Rand Gallery

Office No: 9, Floor:3

Sulaymaniyah, Iraq

Tel: +964 (770) 651 9944

Istanbul Rep. Office

Halaskargazi cad. No:103/7A

Osmanbey, Istanbul, Turkey

Tel: +90 (212) 219 2524

Mob: +90 539 456 4566

DISCLAIMER

This publication may not be reproduced, modified, or re-disseminated in whole or in part without the prior written permission of Rabee Securities. The information provided herein is of a general nature and for informational purposes only and is not intended to serve as an offer or solicitation with respect to the purchase or sale of any security, or as a recommendation to adopt any particular trading strategy. Such information is subject to change without prior notice. Although Rabee Securities obtains information from sources it considers reliable, Rabee Securities makes no representations or warranties, express or implied, as to the information's accuracy or completeness. Furthermore, such information may be incomplete or condensed. Rabee Securities, its affiliates, directors, employees, assigns, agents, and successors bear no liability for any errors or omissions in this publication or for any losses arising from the use of or reliance upon this information. This limitation on liability applies to direct, indirect, consequential, special, punitive, or other damages, as well as damages for loss of profits or business interruption. Investors shall bear all responsibility for investment decisions taken on the basis of the contents of this report. Rabee Securities strongly advises potential investors to seek financial guidance when determining whether an investment is appropriate to their needs. All estimates included in this report constitute Rabee Securities' opinion as of the date published on the report and are subject to change without notice.