

For any inquiries, contact:

Research

Aysegul Ozge Ozgur - SVP, Head of Research (aozgur@rs.iq)
Tugba Tan, Analyst (ttan@rs.iq)
research@rs.iq

Trading

traders@rs.iq
Address: 903/14/19
Karada
Baghdad-Iraq
Tel: +964 (0) 727 002 0407
info@rs.iq

RS Website: RS.IQ

RS Bloomberg page: <RSIQ>

Closing prices for the shares traded on the ISX are now available on Bloomberg.

DISCLAIMER

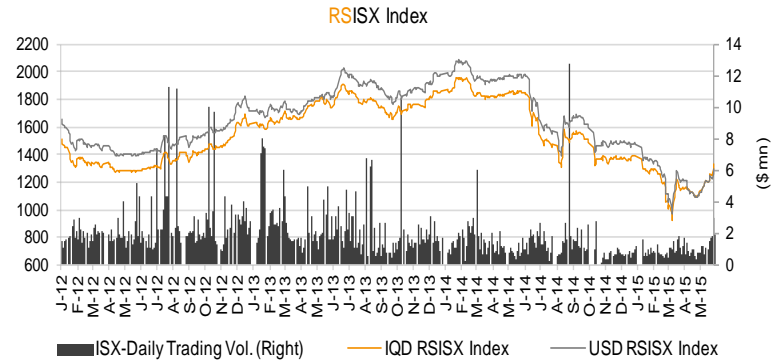
This publication may not be reproduced, modified, or re-disseminated in whole or in part without the prior written permission of Rabee Securities. The information provided herein is of a general nature and for informational purposes only and is not intended to serve as an offer or solicitation with respect to the purchase or sale of any security, or as a recommendation to adopt any particular trading strategy. Such information is subject to change without prior notice. Although Rabee Securities obtains information from sources it considers reliable, Rabee Securities makes no representations or warranties, express or implied, as to the information's accuracy or completeness. Furthermore, such information may be incomplete or condensed. Rabee Securities, its affiliates, directors, employees, assigns, agents, and successors bear no liability for any errors or omissions in this publication or for any losses arising from the use of or reliance upon this information. This limitation on liability applies to direct, indirect, consequential, special, punitive, or other damages, as well as damages for loss of profits or business interruption. Investors shall bear all responsibility for investment decisions taken on the basis of the contents of this report. Rabee Securities strongly advises potential investors to seek financial guidance when determining whether an investment is appropriate to their needs. All estimates included in this report constitute Rabee Securities' opinion as of the date published on the report and are subject to change without notice.

Iraqi Dinar Value

(CBI Auction Price: 1166 / Market Exchange Rate: 1330)

Daily Value Traded

IQD2,534,488,000



The RSISX Performance

	Close	Change	YTD Change
IQD RSISX	1327	2.3%	-4.7%
USD RSISX	1295	2.3%	-12.6%

News from Iraq

Politics

- Spain, which is part of the US-led coalition arrayed against the IS, has given the green light for arms deliveries valued at nearly €100mn (\$109.3mn) to the Iraqi military. The El Pais daily on Thursday reported that the consignments approved by the government comprise munitions and armored vehicles. (Rudaw)
- The Iraqi Defense Ministry has issued a statement claiming Iraqi joint forces have besieged IS militants in Ramadi, cutting off supplies and reinforcements from other extremist-held areas in Anbar province. "Our intelligence information shows that IS can no longer receive military assistance in Ramadi and Iraqi forces have surrounded the city in all directions," Qais Al-Robai, media officer of the ministry, told reporters in Baghdad on Wednesday. (Rudaw)

Economics

- Iraq is planning to boost crude exports by about 26%, according to a report from Bloomberg. Shipping schedules suggest exports of a record 3.75mn bpd in June. Deputy Oil Minister Fayyad al-Nimaa said recently that export capacity is currently capped at 3.1mn bpd. (Iraq Business News)

ISX - Company Announcements

- Asiacell's (TASC) 1Q15 (unaudited) financial results**
P&L (Quarterly) – 1Q15: Sales: IQD429bn, -16% y/y, EBITDA**: IQD173bn, -25% y/y (EBITDA Margin**: 40.2% in 1Q15, decreased from 44.9% in 1Q14), Net Profit: IQD18bn, -82% y/y (Net Profit Margin: 4.3% in 1Q15, decreased from 19.9% in 1Q14).
B/S – 1Q15: Assets: IQD3,667bn, +2% q/q (+15% y/y), BV: IQD1,894bn, +1% q/q (-7% y/y).
- Al-Ameen Financial Investment (VAMF) will hold its AGM* on Jun. 11, 2015 to discuss and approve 2014 annual financial results and accumulated deficit of 2014. ISX will suspend trading of VAMF starting Jun. 4, 2014. Please note, VAMF is trading in non-regular market.
- New shares of Kharkh Tour Amusement City (SKTA) from the capital increase to IQD1.0bn through 100% rights issue resumed trading today (May 28, 2015).

**(Please note that the ex-date for capital increases and dividend distributions is referred to as "Trading Suspension day" which is normally one week before the General Assembly Meetings.)*

***RCS estimate*

Best and Worst Performers

Best Performers	Code	Closing Price(IQD)	% Chg.	Trading Vol. (\$'000)/d
Al-Ameen Estate Investment	SAEI	1.000	11.1%	0.0
Baghdad for Packing Materials	IBPM	1.850	8.8%	2.4
Mosul Bank	BMFI	0.500	8.7%	35.8
United Bank	BUND	0.710	7.6%	124.9
North Bank	BNOR	0.600	7.1%	224.7

Worst Performers	Code	Closing Price(IQD)	% Chg.	Trading Vol. (\$'000)/d
Modern Chemical Industries	IMCI	85.000	-10.5%	0.3
Al-Mansour Pharmaceuticals Ind.	IMAP	0.730	-6.4%	36.5
Al-Ameen Insurance	NAME	1.480	-6.3%	36.8
AL-Nukhba Construction	SNUC	0.970	-3.0%	3.6
National Met. Ind. and Bicycles	IMIB	0.650	-3.0%	0.3

Top 5 Traded Volume	Code	Trading Vol. (IQDmn)/d	Trading Vol. (\$'000)/d	Share in total T. Volume
Gulf Commercial Bank	BGUC	504.8	379.5	19.9%
Bank of Baghdad	BBOB	384.6	289.2	15.2%
North Bank	BNOR	298.8	224.7	11.8%
Baghdad Soft Drinks	IBSD	170.6	128.3	6.7%
United Bank	BUND	166.2	124.9	6.6%

Distribution of Trading Volumes by Sectors

Sector	Trading Vol. (IQD mn)/d	Trading Vol. ('000 \$)/d	Share in Total Trading Volume (%)
Telecom Sector	22.1	16.7	0.9%
Banking Sector	1,871.1	1,406.8	73.8%
Industry Sector	317.6	238.8	12.5%
Hotels & Tourism Sec.	47.5	35.7	1.9%
Services Sector	214.1	161.0	8.4%
Agriculture Sector	8.9	6.7	0.4%
Insurance Sector	53.1	40.0	2.1%
Investment Sector	0.0	0.0	0.0%
Money Transfer Sector	-	-	-
Total	2,534.5	1,905.6	100.0%

Daily Transactions in Brief

The RSISX index ended the day at IQD1,327 / \$1,295 (+2.3%), (-4.7% YTD and -12.6% YTD, respectively).

The number of traded shares was 2.6bn and the trading volume was IQD2.5bn (\$1.9mn).

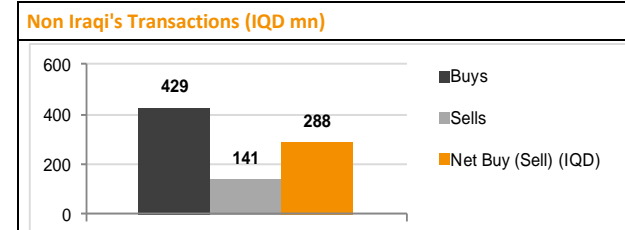
26 out of 48 traded listed stocks' price increased while the prices of 12 stocks decreased, and the price of remaining 10 stocks haven't changed.

Non Iraqis executed 154 transactions in this session:

Buy: 101 transactions in 17 companies operating in banking, industry, services and insurance sectors.

Sells: 53 transactions in 10 companies operating in telecom, banking, industry, hotel&tourism, services and insurance sectors.

Net purchases: IQD288mn (\$217K). Share in total trading volume: 11.2%



Note: Follow Rabee Securities (RS) on Twitter, join Facebook and LinkedIn groups.



Performance of Traded Shares

Company Names	ISX Code	Opening Price (IQD/share)	Price at Session Close (IQD/share)	Previous Closing Price (IQD/share)	Change in Closing Price	Highest Price (IQD/share)	Lowest Price (IQD/share)	No. of Trades (#/d)	No. of Traded Shares (mn)/d	Trading Vol. (IQDmn) /d	Avg. daily trading vol. ('000 \$)*	Mcap (\$mn)	Last Fin.**	P/E (Last)	P/BV (Last)
Telecom Sector															
Asiacell Communications PJSC	TASC	9.95	10.00	10.00	0.0%	10.00	9.95	7	2	22	11.7	2,030.2	3M15	36.7	1.4
Telecom Sector Total								7	2	22		2,030.2			
Banking Sector															
Ashur International Bank	BASH	0.67	0.69	0.65	6.2%	0.70	0.67	16	14	9	3.6	129.7	3M15	8.7	0.6
Babylon Bank***	BBAY	0.41	0.41	0.40	2.5%	0.41	0.41	24	71	29	3.1	77.1	3M15	45.4	0.6
Bank of Baghdad	BBOB	1.45	1.44	1.43	0.7%	1.45	1.40	57	270	385	79.9	270.7	3M15	13.2	1.2
Commercial Bank of Iraq	BCOI	0.73	0.76	0.73	4.1%	0.76	0.73	29	54	40	10.9	142.9	FY14	20.6	0.7
Dijlah & Furat Bank***	BDFD	-	no trade	0.41	-	-	-	-	-	-	1.6	77.1	3M15	-	0.8
Dar Es Salaam Inv. Bank	BDSI	-	Suspend/GA	0.91	-	-	-	-	-	-	6.3	102.6	3M15	9.2	0.7
Economy Bank	BEFI	-	Suspend/ISC	0.72	-	-	-	-	-	-	-	135.3	3M14	-	0.8
Elaf Islamic Bank	BELF	0.61	0.61	0.59	3.4%	0.61	0.61	1	0	0	0.6	91.7	3M15	53.2	0.7
Gulf Commercial Bank	BGUC	0.97	0.98	0.97	1.0%	0.98	0.97	62	515	505	157.7	221.1	3M15	10.1	0.8
Investment Bank of Iraq	BIBI	0.92	0.95	0.92	3.3%	0.96	0.92	24	77	72	28.7	178.6	3M15	9.3	0.8
Iraqi Islamic Bank	BIIB	-	no trade	0.70	-	-	-	-	-	-	73.6	131.6	3M15	41.6	0.7
Iraqi Middle East Bank	BIME	0.71	0.73	0.71	2.8%	0.74	0.71	52	221	160	26.6	137.2	3M15	30.0	0.6
Kurdistan Int. Bank	BKUI	1.90	1.85	1.81	2.2%	1.90	1.85	3	1	2	11.9	556.4	3M15	20.0	1.5
Mosul Bank	BMFI	0.47	0.50	0.46	8.7%	0.50	0.47	23	99	48	23.7	94.9	3M15	-	0.5
Al-Mansour Bank	BMNS	0.99	0.99	0.99	0.0%	0.99	0.97	30	103	101	22.1	186.1	3M15	12.9	0.9
National Islamic Bank	BNAI	-	no trade	1.22	-	-	-	-	-	-	1.8	230.2	FY14	10.2	1.1
National Bank of Iraq	BNOI	0.81	0.81	0.81	0.0%	0.81	0.81	1	0	0	1.6	152.3	3M15	25.2	0.8
North Bank	BNOR	0.56	0.60	0.56	7.1%	0.60	0.56	134	505	299	30.4	135.3	3M15	12.8	0.5
Credit Bank of Iraq	BROI	0.94	0.98	0.94	4.3%	1.00	0.94	24	38	37	15.3	184.2	3M15	20.8	0.8
Sumer Commercial Bank	BSUC	-	no trade	0.90	-	-	-	-	-	-	9.8	169.2	3M15	-	0.9
Trans Iraq Bank For Investment (NR)	BTRI	-	no trade	1.00	-	-	-	-	-	-	-	198.5	3M15	27.5	1.0
United Bank	BUND	0.68	0.71	0.66	7.6%	0.72	0.68	82	235	166	13.9	160.2	3M15	8.8	0.7
Union Bank	BUOI	0.90	0.90	0.90	0.0%	0.90	0.90	2	20	18	3.5	170.5	FY14	14.9	0.8
Banking Sector Total								564	2,223	1,871		3,933.3			

Source: Iraq Stock Exchange

Performance of Traded Shares

Company Names	ISX Code	Opening Price (IQD/share)	Price at Session Close (IQD/share)	Previous Closing Price (IQD/share)	Change in Closing Price	Highest Price (IQD/share)	Lowest Price (IQD/share)	No. of Trades (#/d)	No. of Traded Shares (mn)/d	Trading Vol. (IQDmn) /d	Avg. daily trading vol. ('000 \$)*	Mcap (\$mn)	Last Fin.**	P/E (Last)	P/BV (Last)
Industry Sector															
Baghdad for Packing Materials	IBPM	1.85	1.85	1.70	8.8%	1.85	1.85	2	2	3	0.2	1.5	3M15	-	1.9
Baghdad Soft Drinks	IBSD	1.88	1.97	1.88	4.8%	1.97	1.88	76	88	171	50.4	197.0	3M15	13.8	1.3
Electronic Industries	IELI	1.20	1.23	1.21	1.7%	1.23	1.20	3	3	4	1.1	16.6	9M14	-	0.9
Fallujah for Construction Mat.	IFCM	-	no trade	1.65	-	-	-	-	-	-	1.9	3.9	9M13	95.4	1.8
Nationality Househ. Furniture	IHFI	-	no trade	0.90	-	-	-	-	-	-	-	0.9	3M14	-	0.6
Al-Hilal Industries	IHLI	0.71	0.70	0.69	1.4%	0.71	0.70	13	21	15	2.4	6.5	3M15	-	-
Iraqi for Carton Manufact. & Trading	IICM	-	no trade	0.51	-	-	-	-	-	-	0.1	2.9	3M15	-	-
Iraqi Date Processing&Mark.	IIDP	1.52	1.53	1.51	1.3%	1.53	1.52	5	2	4	7.4	19.8	3M15	42.1	1.3
Iraqi Engineering Works	IIEW	-	no trade	1.19	-	-	-	-	-	-	1.6	1.3	3M15	-	1.1
Iraqi For Tufted Carpets	IITC	-	no trade	4.00	-	-	-	-	-	-	0.2	1.5	3M15	10.8	1.0
Al-Khazer for Construction M.	IKHC	-	no trade	1.80	-	-	-	-	-	-	0.0	1.5	9M13	48.4	1.5
AL- Kindi of Veterinary Vac.	IKLV	-	no trade	0.91	-	-	-	-	-	-	3.4	4.1	3M15	-	0.9
Al-Mansour Pharma. Ind.	IMAP	0.78	0.73	0.78	-6.4%	0.78	0.73	51	65	49	1.9	3.6	3M15	5.2	0.6
Modern Chemical Industries(NR)	IMCI	85.00	85.00	95.00	-10.5%	85.00	85.00	1	0	0	0.0	11.5	3M15	-	3.0
Modern Construction Mat.	IMCM	-	no trade	0.47	-	-	-	-	-	-	0.0	1.9	9M13	-	0.5
Metallic Ind. and Bicycles	IMIB	0.65	0.65	0.67	-3.0%	0.65	0.65	1	1	0	0.1	3.7	3M15	-	3.2
Modern Sewing	IMOS	-	no trade	3.10	-	-	-	-	-	-	0.6	2.1	3M15	-	2.7
Modern Paint Industries	IMPI	1.32	1.32	1.35	-2.2%	1.32	1.32	2	50	66	2.8	9.1	3M14	-	1.6
National Chemical Industries	INCP	0.82	0.78	0.78	0.0%	0.82	0.78	8	6	5	5.4	8.9	3M14	-	1.5
North Soft Drinks	INSD	-	Suspend/ISC	0.35	-	-	-	-	-	-	-	10.9	3M13	-	0.4
Ready Made Clothes	IRMC	-	no trade	7.35	-	-	-	-	-	-	0.8	8.8	3M15	-	7.0
The Light Industries	ITLI	0.73	0.74	0.72	2.8%	0.74	0.72	4	3	2	2.8	9.3	9M14	-	-
Industry Sector Total								166	241	318		327.4			
Hotels & Tourism Sector															
Ashour Hotel	HASH	-	no trade	6.35	-	-	-	-	-	-	0.2	1.8	3M14	5.4	10.7
Baghdad Hotel	HBAG	9.40	9.10	9.01	1.0%	9.40	9.10	2	0	3	0.9	26.3	9M14	36.6	9.0
Babylon Hotel	HBAY	-	no trade	76.00	-	-	-	-	-	-	9.0	77.1	3M15	104.4	-
Ishtar Hotels	HISH	20.00	20.25	19.85	2.0%	20.25	20.00	21	1	26	21.3	34.3	3M15	-	7.6
Karbala Hotels	HKAR	-	no trade	1.70	-	-	-	-	-	-	2.3	6.4	FY14	61.2	1.5
Mansour Hotel	HMAN	23.00	23.00	23.00	0.0%	23.00	23.00	4	1	14	2.0	50.5	9M14	-	53.8
National for Tourist Invest.	HNTI	14.50	14.45	14.50	-0.3%	14.75	14.45	5	0	5	1.5	59.1	3M15	84.9	10.3
Palestine Hotel	HPAL	-	Suspend/GA	13.49	-	-	-	-	-	-	9.3	45.3	3M15	20.1	7.0
Al-Sadeer Hotel	HSAD	25.00	25.00	25.50	-2.0%	25.00	25.00	1	0	0	2.3	23.3	3M15	-	30.3
Mosul Dam Tourist Village	HTVM	-	no trade	5.53	-	-	-	-	-	-	0.7	1.0	FY13	-	-
Hotel&Tourism Sector Total								33	3	47		325.1			

Source: Iraq Stock Exchange

Performance of Traded Shares

Company Names	ISX Code	Opening Price (IQD/share)	Price at Session Close (IQD/share)	Previous Closing Price (IQD/share)	Change in Closing Price	Highest Price (IQD/share)	Lowest Price (IQD/share)	No. of Trades (#/d)	No. of Traded Shares (mn)/d	Trading Vol. (IQDmn) /d	Avg. daily trading vol. ('000 \$)*	Mcap (\$mn)	Last Fin.**	P/E (Last)	P/BV (Last)
Services Sector															
Al-Ameen Estate Inv.(NR)	SAEI	1.00	1.00	0.90	11.1%	1.00	1.00	1	0	0	0.0	5.2	3M15	-	1.0
AL-Badia for General Trans	SBAG	1.25	1.27	1.25	1.6%	1.27	1.25	8	15	19	2.5	2.1	3M15	50.0	0.7
Baghdad Motor Cars Servicing	SBMC	-	Suspend/ISC	1.69	-	-	-	-	-	-	-	1.4	9M12	4.9	1.0
Baghdad Passengers Transport	SBPT	23.80	23.80	23.80	0.0%	23.80	23.80	3	0	1	4.3	17.9	3M15	19.6	14.9
Iraqi for General Transp.***	SIGT	2.08	2.05	2.07	-1.0%	2.08	2.05	9	2	4	16.2	6.0	9M14	-	-
Iraqi Land Transport	SILT	1.72	1.75	1.72	1.7%	1.75	1.72	32	28	49	11.4	18.4	3M15	5.2	1.3
Kharkh Tour Amuzement City	SKTA	8.30	8.30	8.34	-0.5%	8.55	8.10	73	8	67	19.4	6.2	3M15	-	11.1
Al-Mosul for Funfairs	SMOF	-	Suspend/ISC	14.52	-	-	-	-	-	-	0.0	4.4	9M13	6.0	2.3
Mamoura Realestate Inv.	SMRI	4.29	4.29	4.29	0.0%	4.30	4.25	34	16	69	20.8	53.3	3M15	-	3.8
AL-Nukhba for Construction***	SNUC	1.00	0.97	1.00	-3.0%	1.00	0.97	6	5	5	0.9	3.6	3M15	-	1.9
Services Sector Total								166	74	214		118.5			
Agriculture Sector															
Al-Ahlyia for Agricultural Prod.	AAHP	-	no trade	1.18	-	-	-	-	-	-	0.1	0.5	9M14	-	3.5
Iraqi Agr. Prod. Mark. Meat	AIPM	-	no trade	4.55	-	-	-	-	-	-	1.6	15.4	3M15	-	3.1
Iraqi Agricultural Products	AIRP	-	no trade	9.40	-	-	-	-	-	-	0.7	2.5	3M15	-	1.3
Iraqi for Seed Production***	AISP	5.36	5.36	5.35	0.2%	5.36	5.35	7	1	6	7.1	30.2	FY13	4.3	2.6
Modern Animal & Agr. Production	AMAP	0.61	0.61	0.62	-1.6%	0.61	0.61	5	5	3	0.3	1.8	3M15	-	0.5
Middle East for Prod.- Fish	AMEF	-	no trade	7.10	-	-	-	-	-	-	0.0	1.6	9M14	17.5	1.4
Agriculture Sector Total								12	6	9		52.1			
Insurance Sector															
AHliya For Insurance	NAHF	0.66	0.66	0.67	-1.5%	0.66	0.66	1	1	0	0.0	1.2	9M14	17.0	0.5
Al-Ameen for Insurance	NAME	1.65	1.48	1.58	-6.3%	1.65	1.47	34	32	49	1.4	3.3	3M15	6.0	1.1
Dar Al-Salam for Insurance	NDSA	1.60	1.55	1.55	0.0%	1.60	1.55	7	1	1	0.1	3.7	3M15	4.8	1.0
Gulf Insurance&Reinsurance***	NGIR	0.44	0.44	0.43	2.3%	0.45	0.42	7	5	2	0.4	1.7	FY14	29.2	1.0
Al-Hamraa for Insurance (NR)	NHAM	-	no trade	1.00	-	-	-	-	-	-	-	3.8	3M15	4.1	0.8
Insurance Sector Total								49	39	53		13.7			
Investment Sector															
Al-Ameen Financial Inv. (NR)	VAMF	-	no trade	2.00	-	-	-	-	-	-	0.1	1.5	3M15	-	2.5
AL- Batek Investment(NR)	VBAT	-	no trade	0.80	-	-	-	-	-	-	-	0.6	3M15	-	0.6
Al-Khair for Financial Inv. (NR)	VKHF	-	no trade	0.38	-	-	-	-	-	-	-	2.0	9M14	-	0.4
Bain Al-Nahrain Financial Inv.(NR)	VMES	-	no trade	1.00	-	-	-	-	-	-	-	0.8	3M15	-	1.0
AL-Wiaam for Financial Inv.	VWIF	0.90	0.90	0.90	0.0%	0.90	0.90	4	0	0	0.0	1.4	3M15	-	1.0
Al-Zawraa for Financial Inv.	VZAF	-	no trade	0.63	-	-	-	-	-	-	0.0	0.5	3M15	-	0.6
Investment Sector Total								4	0	0		6.8			

Source: Iraq Stock Exchange

Performance of Traded Shares

Company Names	ISX Code	Opening Price (IQD/share)	Price at Session Close (IQD/share)	Previous Closing Price (IQD/share)	Change in Closing Price	Highest Price (IQD/share)	Lowest Price (IQD/share)	No. of Trades (#/d)	No. of Traded Shares (mn)/d	Trading Vol. (IQDmn) /d	Avg. daily trading vol. ('000 \$)*	Mcap (\$mn)	Last Fin.**	P/E (Last)	P/BV (Last)
Money Transfer Sector															
Al-Harir for Money Transfer(NR)	MTAH	-	no trade		-	-	-	-	-	-	-	-	FY14	-	-
Al-Taif Money Transfer(NR)	MTAI	-	no trade		-	-	-	-	-	-	-	-	FY14	-	-
Al Muhej Money Transfer(NR)	MTAM	-	no trade		-	-	-	-	-	-	-	-	6M14	-	-
Al-Iraqia For Money Transfer(NR)	MTIR	-	no trade		-	-	-	-	-	-	-	-	9M14	-	-
Al-Manafaa Co. for Money Transfer(NR)	MTMA	-	no trade		-	-	-	-	-	-	-	-	FY14	-	-
Mouta for Remittance(NR)	MTMO	-	no trade		-	-	-	-	-	-	-	-	FY14	-	-
Alnoor for Money Transfer(NR)	MTNN	-	no trade		-	-	-	-	-	-	-	-	3M15	-	-
Nobles for Money Transfer(NR)	MTNO	-	no trade		-	-	-	-	-	-	-	-	9M14	-	-
Al-Rabita Al-Maliya Co.(NR)	MTRA	-	no trade		-	-	-	-	-	-	-	-	3M15	-	-
Sama Baghdad Finance Transfer(NR)	MTSB	-	no trade		-	-	-	-	-	-	-	-	6M14	-	-
United Arab Money Transfer(NR)	MTUA	-	no trade		-	-	-	-	-	-	-	-	FY14	-	-
Al-Waeel for Money Transfer(NR)	MTWA	-	no trade		-	-	-	-	-	-	-	-	9M14	-	-
Money Transfer Sector Total															
Grand Total								1,001	2,587	2,534		6,807.0			

Source: Iraq Stock Exchange

*Average data was calculated according to recent six months, by dividing the total daily trading volume (excluding two highest trading vol.) to total number of trading days (excluding the No. of days share were suspended due to GA or by ISC).

** Last Financials: The date of the most recent financial statements.

P/E (Last): For banking sector, we divided "Current Mcap" to "trailing net profit" while calculating P/E (Last), when the recently announced financial statements are for the interim period. For other listed companies, we divided "Current Mcap" to "annualized YTD profit" while calculating P/E (Last), when the recently announced financial statements are for the interim period. While calculating annualized YTD profit, we adjusted unaudited profit before tax values by deducting 15% income tax.

P/BV (Last): Calculated by dividing "Current Mcap" to "BV in its Last Financials".

***When the original shares resume trading, we start using the number of shares that the company will reach after the capital increase with the assumption that the capital increase was reflected to the price of the shares. We use the new capital in calculating Mcap.

Note: "Suspend/ISC" companies are not trading due to ISC Instructions.

"Suspend/GA" companies are not trading due to General Assembly Meetings.

"(NR)": These are the companies which are trading in the Non-Regular market (in compliance with Iraq Securities Commission law numbered 132/9 on 20/12/2012). These companies were moved to the secondary market (non-regular) because of the decrease in their trading volume and the number of days that these companies are being traded for. Please note, according to the Regulations of the Secondary Market, in each trading session, the average share price will be calculated for each share. The maximum increase and decrease of +/- 20% will be based on the average price in the previous session. The price should be valid during three effective trading sessions after the listing, and it will be free in the first trading session after capital increasing.

For any inquiries, contact:

Research

Aysegul Ozge Ozgur - SVP, Head of Research (aozgur@rs.iq)

Tugba Tan, Analyst (ttan@rs.iq)

research@rs.iq

Tel: +90 212 219 2524

Mob: +90 539 456 4566

Trading

traders@rs.iq

Tel: +964 727 002 0407

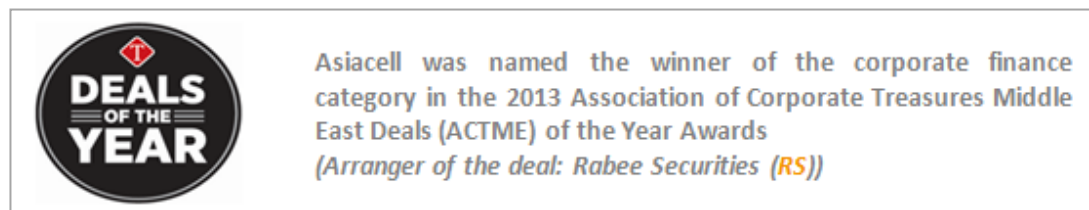
Info

info@rs.iq

Tel: +964 (790) 133 1492

RS Bloomberg page: <RSIQ>

RS Website: RS.IQ



Baghdad HQ

903/14/19
Karada, Baghdad, Iraq
Tel: +964 727 002 0407

Erbil

Italian Village offices
Office No: 32, Erbil, Iraq
Mob: +964 770 493 9999

Suleymani

Rand Gallery
Office No: 9, Floor:3 , Suleymani, Iraq
Mob: +964 770 651 9944

Istanbul Rep. Office

Halaskargazi cad. No: 103/7A
Osmanbey, Istanbul, Turkey
Tel: +90 212 219 2524
Mob: +90 539 456 4566

DISCLAIMER

This publication may not be reproduced, modified, or re-disseminated in whole or in part without the prior written permission of Rabee Securities. The information provided herein is of a general nature and for informational purposes only and is not intended to serve as an offer or solicitation with respect to the purchase or sale of any security, or as a recommendation to adopt any particular trading strategy. Such information is subject to change without prior notice. Although Rabee Securities obtains information from sources it considers reliable, Rabee Securities makes no representations or warranties, express or implied, as to the information's accuracy or completeness. Furthermore, such information may be incomplete or condensed. Rabee Securities, its affiliates, directors, employees, assigns, agents, and successors bear no liability for any errors or omissions in this publication or for any losses arising from the use of or reliance upon this information. This limitation on liability applies to direct, indirect, consequential, special, punitive, or other damages, as well as damages for loss of profits or business interruption. Investors shall bear all responsibility for investment decisions taken on the basis of the contents of this report. Rabee Securities strongly advises potential investors to seek financial guidance when determining whether an investment is appropriate to their needs. All estimates included in this report constitute Rabee Securities' opinion as of the date published on the report and are subject to change without notice.