

For any inquiries, contact:

Research

Aysegul Ozge Ozgur

SVP, Head of Research (aozgur@rs.iq)

Tugba Tan

Analyst (ttan@rs.iq)

Ahmed Abdul - Ameer

Associate (aameer@rs.iq)

research@rs.iq

Trading

traders@rs.iq

Address: 903/14/19

Karada, Baghdad-Iraq

Tel: +964 (0) 727 002 0407

info@rs.iq

RS Website: RS.IQ

RS Bloomberg page: <RSIQ>

Closing prices for the shares traded on the ISX are now available on Bloomberg.

DISCLAIMER

This publication may not be reproduced, modified, or re-disseminated in whole or in part without the prior written permission of Rabee Securities. The information provided herein is of a general nature and for informational purposes only and is not intended to serve as an offer or solicitation with respect to the purchase or sale of any security, or as a recommendation to adopt any particular trading strategy. Such information is subject to change without prior notice. Although Rabee Securities obtains information from sources it considers reliable, Rabee Securities makes no representations or warranties, express or implied, as to the information's accuracy or completeness. Furthermore, such information may be incomplete or condensed. Rabee Securities, its affiliates, directors, employees, assigns, agents, and successors bear no liability for any errors or omissions in this publication or for any losses arising from the use of or reliance upon this information. This limitation on liability applies to direct, indirect, consequential, special, punitive, or other damages, as well as damages for loss of profits or business interruption. Investors shall bear all responsibility for investment decisions taken on the basis of the contents of this report. Rabee Securities strongly advises potential investors to seek financial guidance when determining whether an investment is appropriate to their needs. All estimates included in this report constitute Rabee Securities' opinion as of the date published on the report and are subject to change without notice.

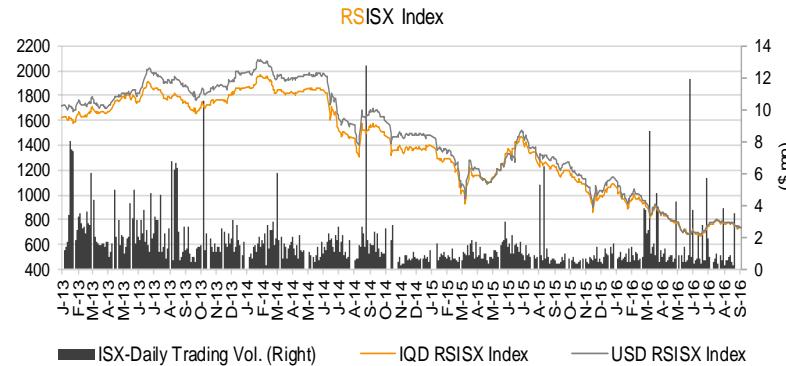
Daily Bulletin / Tuesday

Iraqi Dinar Value

(CBI Auction Price: 1182 / Market Exchange Rate: 1295)

Daily Value Traded

IQD163,471,000



The RSISX Performance

	Close	Change (d/d)	Change (YTD)
IQD RSISX	733	0.0%	-32.7%
USD RSISX	735	0.0%	-35.8%

News from Iraq

Politics

• Mr. Dominique Mas, the new Consul General of the Republic of France to the Kurdistan Region, was received today by the Head of the Department of Foreign Relations, Minister Falah Mustafa. Minister Mustafa said that France is an important ally and a friend of the people of Kurdistan. He commended the support and solidarity of the French government with the Kurdistan Region. Both sides reviewed the existing cooperation and shared views on further strengthening ties in order to build a long-term partnership. (Iraq Business News)

Economics

• The Kurdistan Regional Government (KRG) received about \$350mn on account for oil exports through the KRG-Ceyhan crude oil pipeline in August, the Ministry of Natural Resources (MNR) said on Monday. The Kurdistan Regional Government (KRG) produced over 311mn standard cubic feet per day (mmscf/d) of gas in August, the Ministry of Natural Resources (MNR) said on Monday. The production of net gas has increased in compare to July. The MNR produced more than 306 mmscf/d in July. (NRT tv)

ISX – Company Announcements

- Modern Chemical Industries (IMCI) will resume trading tomorrow (Sep. 7, 2016) after discussing and approving 2015 annual financial results and distributing 60% cash dividends (IQD0.6 dividend per share). The opening price will be IQD69.4 with +/-20% change for the first session.
- National Chemical & Plastic Industries (INCP) resumed trading today (Sep. 6, 2016) after discussing and approving 2015 annual financial results.
- Al-Arabiya Islamic Bank (BAAI) will hold a general meeting on Sept. 9, 2016. ISX suspended trading of BAAI starting today (Sept. 6, 2016).
- ISX sent the required procedures and requirements to the following banks and companies that must be completed to be listed in the market: Al-Aswar for Money Transfer, Al-Taib for Money Transfer, Al-Lulu for Money Transfer, Al-Ameen Al-Arabia for Money Transfer, Al-Rawahil Islamic Bank, Al-Bilad Islamic Bank, Cihan Islamic Bank, International Development Bank, Region Trade Bank, Al-Huda Bank.

Best and Worst Performers

Best Performers	Code	Closing Price(IQD)	% Chg.	Trading Vol. (\$'000)/d
Iraqi for Seed Production	AISP	6.090	1.0%	9.2
-	-	-	-	-
-	-	-	-	-
-	-	-	-	-
-	-	-	-	-

Worst Performers	Code	Closing Price(IQD)	% Chg.	Trading Vol. (\$'000)/d
Elaf Islamic Bank	BELF	0.270	-3.6%	1.6
Modern Animal & Agr. Production	AMAP	0.500	-2.0%	0.6
Baghdad Hotel	HBAG	9.100	-1.6%	0.7
Baghdad Passengers Transport	SBPT	13.150	-1.1%	1.7
Iraqi Agr. Prod. Mark. Meat	AIPM	2.650	-1.1%	0.3

Top 5 Trading Volume	Code	Trading Vol. (IQDmn)/d	Trading Vol. (\$'000)/d	Share in total T. Volume
Bank of Baghdad	BBOB	55.8	43.1	34.1%
Sumer Commercial Bank	BSUC	24.3	18.8	14.9%
Mosul Bank	BMFI	18.6	14.4	11.4%
Credit Bank of Iraq	BROI	15.6	12.1	9.6%
Iraqi for Seed Production	AISP	11.9	9.2	7.3%

Distribution of Trading Volumes by Sectors

Sector	Trading Vol. (IQD mn)/d	Trading Vol. ('000 \$)/d	Share in Total Trading Volume (%)
Telecom Sector	-	-	-
Banking Sector	133.8	103.3	81.8%
Industry Sector	10.4	8.1	6.4%
Hotels & Tourism Sec.	2.2	1.7	1.4%
Services Sector	4.0	3.1	2.4%
Agriculture Sector	13.0	10.1	8.0%
Insurance Sector	-	-	-
Investment Sector	-	-	-
Money Transfer sector	-	-	-
Total	163.5	126.2	100.0%

Daily Transactions in Brief

The RSISX index ended the day at **IQD733 / \$735 (0.0%) (-32.7% YTD and -35.8% YTD, respectively)**.

The number of traded shares was **289mn** and the trading volume was **IQ163mn (\$126K)**.

1 out of **24** traded listed stocks' price increased while the prices of **13** stocks decreased and the price of remaining **10** stocks haven't changed.

Note: ISX will be closed starting from Sep. 11, 2016 to Sep. 15, 2016 due to the national holiday of Eid Al-Adha. The next session will be held on Sunday, Sep. 18, 2016.

Non Iraqis did not execute any transaction in this session.

Note: Follow Rabee Securities (RS) on Twitter, join Facebook and LinkedIn groups.



Performance of Traded Shares

Company Names	ISX Code	Opening Price (IQD/share)	Price at Session Close (IQD/share)	Previous Closing Price (IQD/share)	Change in Closing Price	Highest Price (IQD/share)	Lowest Price (IQD/share)	No. of Trades (#/d)	No. of Traded Shares (mn)/d	Trading Vol. (IQDmn) /d	Avg. daily trading vol. ('000 \$)*	Mcap (\$mn)	Last Fin.**	P/E (Last)	P/BV (Last)
Telecom Sector															
Asiacell Communications PJSC	TASC	-	Suspend/ISC	4.36	-	-	-	-	-	-	8.8	1,043.7	9M15	12.5	0.7
Al Khatem Telecom Company	TZNI	-	no trade	2.95	-	-	-	-	-	-	0.0	4,168.2	6M16	51.2	2.6
Telecom Sector Total												5,211.9			
Banking Sector															
Al-Arabiya Islamic Bank (NR)	BAAI	-	Suspend/GA	1.00	-	-	-	-	-	-	-	77.2	6M16	-	1.0
Ashur International Bank	BASH	0.29	0.29	0.29	0.0%	0.29	0.29	1	1	0	0.7	56.0	6M16	11.7	0.3
Babylon Bank	BBAY	-	no trade	0.20	-	-	-	-	-	-	3.0	38.6	6M16	8.2	0.2
Bank of Baghdad	BBOB	0.76	0.76	0.76	0.0%	0.77	0.76	18	73	56	112.2	146.7	6M16	-	0.7
Commercial Bank of Iraq	BCOI	0.43	0.43	0.43	0.0%	0.43	0.43	2	7	3	27.6	83.0	6M16	17.5	0.4
Dijlah & Furat Bank	BDFD	-	no trade	0.17	-	-	-	-	-	-	0.0	14.7	6M16	0.4	0.1
Dar Es Salaam Inv. Bank***	BDSI	-	Suspend/ISC	0.13	-	-	-	-	-	-	26.2	25.1	6M16	-	0.2
Economy Bank	BEFI	-	Suspend/ISC	0.72	-	-	-	-	-	-	-	139.0	3M14	23.3	0.9
Elaf Islamic Bank	BELF	0.28	0.27	0.28	-3.6%	0.28	0.27	8	7	2	0.1	52.1	6M16	-	0.3
Gulf Commercial Bank	BGUC	-	Suspend/GA	0.39	-	-	-	-	-	-	39.2	90.3	6M16	14.2	0.4
Investment Bank of Iraq	BIBI	0.52	0.52	0.52	0.0%	0.52	0.52	6	6	3	12.5	100.4	6M16	9.5	0.5
Iraqi Islamic Bank	BIIB	-	no trade	0.45	-	-	-	-	-	-	0.3	86.9	6M16	12.7	0.4
Iraqi Middle East Bank	BIME	0.32	0.33	0.33	0.0%	0.33	0.32	17	31	10	16.6	63.7	6M16	13.0	0.3
Kurdistan Int. Bank	BKUI	-	no trade	1.15	-	-	-	-	-	-	7.7	355.2	6M16	9.6	0.9
Mosul Bank	BMFI	0.20	0.20	0.20	0.0%	0.20	0.20	12	93	19	19.2	39.0	6M16	-	0.2
Al-Mansour Bank	BMNS	-	no trade	0.96	-	-	-	-	-	-	24.6	185.3	6M16	11.6	0.8
National Islamic Bank	BNAI	-	no trade	1.05	-	-	-	-	-	-	0.0	203.5	6M16	10.4	0.9
National Bank of Iraq	BNOI	-	no trade	0.33	-	-	-	-	-	-	0.1	63.7	6M16	16.3	0.3
North Bank	BNOR	-	Suspend/ISC	0.12	-	-	-	-	-	-	4.6	27.8	6M16	-	0.1
Credit Bank of Iraq	BROI	0.70	0.70	0.70	0.0%	0.70	0.69	16	22	16	12.5	135.1	6M16	20.9	0.6
Sumer Commercial Bank	BSUC	0.90	0.90	0.90	0.0%	0.90	0.90	3	27	24	53.8	173.7	6M16	57.8	0.9
Trans Iraq Bank for Investment (NR)	BTRI	-	no trade	0.70	-	-	-	-	-	-	23.2	142.7	6M16	28.6	0.7
United Bank	BUND	0.21	0.22	0.22	0.0%	0.22	0.21	4	3	1	114.4	51.0	6M16	16.2	0.2
Union Bank	BUOI	-	no trade	0.38	-	-	-	-	-	-	0.0	73.9	6M16	-	0.4
Banking Sector Total								87	271	134		2,347.6			

Source: Iraq Stock Exchange

Performance of Traded Shares

Company Names	ISX Code	Opening Price (IQD/share)	Price at Session Close (IQD/share)	Previous Closing Price (IQD/share)	Change in Closing Price	Highest Price (IQD/share)	Lowest Price (IQD/share)	No. of Trades (#/d)	No. of Traded Shares (mn)/d	Trading Vol. (IQDmn) /d	Avg. daily trading vol. ('000 \$)*	Mcap (\$mn)	Last Fin.**	P/E (Last)	P/BV (Last)
Industry Sector															
Baghdad for Packing Materials	IBPM	1.40	1.40	1.40	0.0%	1.40	1.40	3	2	3	0.3	1.2	6M16	-	1.5
Baghdad Soft Drinks	IBSD	-	Suspend/GA	1.97	-	-	-	-	-	-	120.8	202.3	6M16	8.6	1.1
Electronic Industries	IELI	-	Suspend/ISC	1.01	-	-	-	-	-	-	-	14.0	6M16	-	1.0
Fallujah for Construction Mat.	IFCM	-	Suspend/ISC	1.51	-	-	-	-	-	-	-	3.6	9M13	87.4	1.6
Nationality Househ. Furniture(NR)	IHFI	-	Suspend/ISC	0.90	-	-	-	-	-	-	-	0.9	3M14	-	0.6
Al-Hilal Industries	IHLI	-	no trade	0.28	-	-	-	-	-	-	3.6	2.7	6M16	-	-
Iraqi for Carton Manufact. & Trading	IICM	-	Suspend/ISC	0.27	-	-	-	-	-	-	0.1	1.6	6M16	-	-
Iraqi Date Processing&Mark.***	IIDP	1.65	1.65	1.65	0.0%	1.65	1.65	3	1	1	5.7	35.2	9M16	-	2.4
Iraqi Engineering Works	IIEW	-	no trade	0.60	-	-	-	-	-	-	-	0.7	6M16	-	0.6
Iraqi For Tufted Carpets	IITC	4.50	4.50	4.50	0.0%	4.50	4.50	1	0	0	0.1	1.7	6M16	7.0	1.1
Al -Khazer for Construction M.	IKHC	-	no trade	1.30	-	-	-	-	-	-	-	1.1	9M13	35.0	1.1
AL- Kindi of Veterinary Vac.	IKLV	-	Suspend/ISC	0.54	-	-	-	-	-	-	5.3	2.5	6M16	15.6	0.5
Al-Mansour Pharma. Ind.	IMAP	0.62	0.62	0.62	0.0%	0.62	0.62	3	10	6	5.7	3.1	6M16	-	0.5
Modern Chemical Industries(NR)	IMCI	-	Suspend/GA	70.00	-	-	-	-	-	-	-	9.7	6M16	139.0	2.5
Modern Construction Mat.(NR)	IMCM	-	Suspend/ISC	0.47	-	-	-	-	-	-	-	1.9	9M13	-	0.5
Metallic Ind. and Bicycles	IMIB	-	Suspend/ISC	0.50	-	-	-	-	-	-	0.0	2.9	3M16	-	86.0
Modern Sewing	IMOS	-	no trade	2.71	-	-	-	-	-	-	0.7	2.1	6M16	16.5	2.1
Modern Paint Industries	IMPI	-	Suspend/ISC	1.25	-	-	-	-	-	-	-	8.9	9M15	-	2.3
National Chemical Industries	INCP	-	no trade	0.40	-	-	-	-	-	-	1.1	4.7	6M16	-	1.8
Ready Made Clothes	IRMC	-	Suspend/ISC	6.80	-	-	-	-	-	-	0.1	8.4	6M16	-	6.5
The Light Industries	ITLI	-	Suspend/ISC	0.31	-	-	-	-	-	-	2.5	4.0	9M15	-	-
Industry Sector Total								10	13	10		313.2			
Hotels & Tourism Sector															
Ashour Hotel(NR)	HASH	-	no trade	5.15	-	-	-	-	-	-	1.3	1.5	3M14	4.4	8.7
Baghdad Hotel	HBAG	9.10	9.10	9.25	-1.6%	9.10	9.10	2	0	1	2.7	27.0	6M16	24.7	5.8
Babylon Hotel	HBAY	-	Suspend/ISC	24.60	-	-	-	-	-	-	6.2	38.0	6M16	119.5	33.7
Ishtar Hotels	HISH	-	Suspend/ISC	11.10	-	-	-	-	-	-	8.5	30.0	6M16	-	3.9
Karbala Hotels	HKAR	-	no trade	1.45	-	-	-	-	-	-	0.5	5.6	6M16	-	1.3
Mansour Hotel	HMAN	-	Suspend/ISC	14.40	-	-	-	-	-	-	5.2	32.5	3M16	122.0	25.9
National for Tourist Invest.	HNTI	8.50	8.50	8.50	0.0%	8.50	8.50	2	0	1	1.4	41.0	6M16	72.1	4.8
Palestine Hotel	HPAL	-	Suspend/ISC	12.49	-	-	-	-	-	-	9.6	43.1	6M16	-	8.1
Al-Sadeer Hotel	HSAD	-	no trade	19.00	-	-	-	-	-	-	0.6	18.2	6M16	-	23.8
Mosul Dam Tourist Village(NR)	HTVM	-	no trade	6.04	-	-	-	-	-	-	0.8	1.1	9M15	-	-
Hotel&Tourism Sector Total								4	0	2		238.1			

Source: Iraq Stock Exchange

Performance of Traded Shares

Company Names	ISX Code	Opening Price (IQD/share)	Price at Session Close (IQD/share)	Previous Closing Price (IQD/share)	Change in Closing Price	Highest Price (IQD/share)	Lowest Price (IQD/share)	No. of Trades (#/d)	No. of Traded Shares (mn)/d	Trading Vol. (IQDmn) /d	Avg. daily trading vol. ('000 \$)*	Mcap (\$mn)	Last Fin.**	P/E (Last)	P/BV (Last)
Services Sector															
Al-Ameen Estate Inv.(NR)	SAEI	-	no trade	0.45	-	-	-	-	-	-	-	2.4	6M16	-	0.5
AL-Badia for General Trans	SBAG	-	Suspend/ISC	0.60	-	-	-	-	-	-	0.1	1.0	6M16	-	0.4
Baghdad Passengers Transport	SBPT	13.15	13.15	13.30	-1.1%	13.15	13.15	3	0	2	1.6	10.2	6M16	10.9	4.3
Iraqi for General Transp.***	SIGT	-	Suspend/ISC	1.64	-	-	-	-	-	-	-	4.9	6M15	-	-
Iraqi Land Transport	SILT	-	Suspend/ISC	0.68	-	-	-	-	-	-	9.0	7.4	6M16	-	0.6
Kharkh Tour Amuzement City	SKTA	-	no trade	5.08	-	-	-	-	-	-	22.1	3.9	6M16	-	4.6
Al-Mosul for Funfairs	SMOF	-	Suspend/ISC	14.52	-	-	-	-	-	-	-	4.5	3M14	5.0	2.5
Mamoura Real-estate Inv.	SMRI	2.06	2.06	2.06	0.0%	2.06	2.06	3	1	2	22.8	30.5	6M16	99.6	2.0
AL-Nukhba for Construction	SNUC	-	no trade	0.31	-	-	-	-	-	-	0.0	0.5	6M16	-	0.2
Services Sector Total								6	1	4		65.3			
Agriculture Sector															
Al-Ahlyia for Agricultural Prod.	AAHP	-	no trade	1.35	-	-	-	-	-	-	0.1	0.6	3M16	-	3.1
Iraqi Agr. Prod. Mark. Meat	AIPM	2.70	2.65	2.68	-1.1%	2.70	2.65	3	0	0	2.1	10.2	6M16	99.3	1.9
Iraqi Agricultural Products	AIRP	-	no trade	7.35	-	-	-	-	-	-	0.0	2.0	6M16	6.3	1.0
Iraqi for Seed Production	AISP	6.04	6.09	6.03	1.0%	6.15	6.04	32	2	12	18.4	35.3	3M16	4.3	1.8
Modern Animal & Agr. Production	AMAP	0.50	0.50	0.51	-2.0%	0.50	0.50	3	2	1	0.1	1.6	6M16	-	0.5
Middle East for Prod.- Fish	AMEF	-	Suspend/GA	7.10	-	-	-	-	-	-	0.0	1.6	FY15	16.0	1.2
Agriculture Sector Total								38	4	13		51.4			
Insurance Sector															
AHliya For Insurance	NAHF	-	no trade	0.33	-	-	-	-	-	-	-	0.6	6M16	-	0.3
Al-Ameen for Insurance	NAME	-	no trade	0.51	-	-	-	-	-	-	0.2	2.0	6M16	14.0	0.6
Dar Al-Salam for Insurance	NDSA	-	no trade	0.89	-	-	-	-	-	-	0.0	2.4	6M16	-	0.6
Gulf Insurance&Reinsurance***	NGIR	-	no trade	0.40	-	-	-	-	-	-	0.7	1.5	6M16	19.9	1.0
Al-Hamraa for Insurance (NR)	NHAM	-	no trade	0.64	-	-	-	-	-	-	0.0	2.5	6M16	6.6	0.5
Insurance Sector Total								-	-	-		9.0			
Investment Sector															
Al-Ameen Financial Inv. (NR)	VAMF	-	no trade	1.40	-	-	-	-	-	-	0.0	1.1	6M16	-	2.1
AL- Batek Investment(NR)	VBAT	-	no trade	0.72	-	-	-	-	-	-	0.0	0.6	6M16	-	0.5
Al-Khair for Financial Inv. (NR)	VKHF	-	Suspend/ISC	0.20	-	-	-	-	-	-	0.6	1.1	FY15	-	0.2
Bain Al-Nahrain Financial Inv.(NR)	VMES	-	no trade	1.00	-	-	-	-	-	-	-	0.8	6M16	20.6	1.0
AL-Wiaam for Financial Inv.	VWIF	-	no trade	0.89	-	-	-	-	-	-	-	1.4	6M16	-	1.1
Al-Zawraa for Financial Inv.	VZAF	-	no trade	0.42	-	-	-	-	-	-	0.0	0.4	6M16	-	0.4
Investment Sector Total								-	-	-		5.2			

Source: Iraq Stock Exchange

Performance of Traded Shares

Company Names	ISX Code	Opening Price (IQD/share)	Price at Session Close (IQD/share)	Previous Closing Price (IQD/share)	Change in Closing Price	Highest Price (IQD/share)	Lowest Price (IQD/share)	No. of Trades (#/d)	No. of Traded Shares (mn)/d	Trading Vol. (IQDmn) /d	Avg. daily trading vol. ('000 \$)*	Mcap (\$mn)	Last Fin.**	P/E (Last)	P/BV (Last)
Money Transfer Sector															
Al-Harir for Money Transfer(NR)	MTAH	-	no trade		-	-	-	-	-	-	-	-	6M16	-	-
Al-Taif Money Transfer(NR)	MTAI	-	no trade	2.55	-	-	-	-	-	-	-	74.8	6M16	143.8	2.1
Al Muhej Money Transfer(NR)	MTAM	-	Suspend/ISC		-	-	-	-	-	-	-	-	FY15	-	-
Al-Iraqia for Money Transfer(NR)	MTIR	-	Suspend/ISC	1.00	-	-	-	-	-	-	0.0	77.2	6M16	161.6	2.2
Al-Manafaa Co. for Money Trans.(NR)	MTMA	-	no trade		-	-	-	-	-	-	-	-	6M16	-	-
Mouta for Remittance(NR)	MTMO	-	no trade		-	-	-	-	-	-	-	-	6M16	-	-
Al-Motaman for Money Transfer(NR)	MTMT	-	Suspend/ISC	1.00	-	-	-	-	-	-	-	77.2	6M16	-	1.0
Al Nibal Al Arabya for Money Transfer (NR)	MTNI	-	no trade	1.00	-	-	-	-	-	-	-	34.7	6M16	-	1.0
Alnoor for Money Transfer (NR)	MTNN	-	Suspend/GA		-	-	-	-	-	-	-	-	6M16	-	-
Nobles for Money Transfer(NR)	MTNO	-	Suspend/GA		-	-	-	-	-	-	-	-	6M16	-	-
Al-Rabita Al-Maliya Co.(NR)	MTRA	-	no trade		-	-	-	-	-	-	-	-	6M16	-	-
Sama Baghdad Finance Transfer(NR)	MTSB	-	Suspend/ISC		-	-	-	-	-	-	-	-	3M16	-	-
Al-Waeel for Money Transfer(NR)	MTWA	-	Suspend/ISC		-	-	-	-	-	-	-	-	FY15	-	-
Money Transfer Sector Total												264.0			
Grand Total								145	289	163		8,505.8			

Source: Iraq Stock Exchange

*Average data was calculated according to recent six months, by dividing the total daily trading volume (excluding two highest trading vol.) to total number of trading days (excluding the No. of days share were suspended due to GA or by ISC).

** Last Financials: The date of the most recent financial statements.

P/E (Last): While calculating P/E (Last), we divided "Current Mcap" to "trailing net profit" when the recently announced financial statements are for the interim period. For the companies which trailing profit cannot be calculated due to lack of information, we divided "Current MCap" to "annualized YTD profit," while calculating P/E (Last). We adjusted unaudited profit before tax values by deducting 15% income tax, while calculating annualized YTD profit.

P/BV (Last): Calculated by dividing "Current Mcap" to "BV in its Last Financials".

***When the original shares resume trading, we start using the number of shares that the company will reach after the capital increase with the assumption that the capital increase was reflected to the price of the shares. We use the new capital in calculating Mcap.

Note: "Suspend/ISC" companies are not trading due to ISC Instructions.

"Suspend/GA" companies are not trading due to General Assembly Meetings.

"(NR)": These are the companies which are trading in the Non-Regular market (in compliance with Iraq Securities Commission law numbered 132/9 on 20/12/2012). These companies were moved to the secondary market (non-regular) because of the decrease in their trading volume and the number of days that these companies are being traded for. Please note, according to the Regulations of the Secondary Market, in each trading session, the average share price will be calculated for each share. The maximum increase and decrease of +/- 20% will be based on the average price in the previous session. The price should be valid during three effective trading sessions after the listing, and it will be free in the first trading session after capital increasing.

"We use the FX rate given by the bank that Rabee Securities makes its banking transactions while calculating the dollar values in our research reports instead of CBI market FX rate to be more conservative."

For any inquiries, contact:

Research

Aysegul Ozge Ozgur (SVP, Head of Research)

aozgur@rs.iq

Tugba Tan (Analyst)

ttan@rs.iq

Ahmed Abdul - Ameer (Associate)

aameer@rs.iq

research@rs.iq

Tel: +90 212 219 2524

Trading

traders@rs.iq

Tel: +964 727 002 0407

Info

info@rs.iq

Tel: +964 (790) 133 1492

RS Bloomberg page: <RSIQ>

RS Website: RS.IQ



Asiacell has won "EMEAFINANCE's Best IPO in EMEA award" in EMEA Finance's Achievement Awards 2013.
(Arranger of the deal: Rabee Securities (RS))



Asiacell was named the winner of the corporate finance category in the 2013 Association of Corporate Treasures Middle East Deals (ACTME) of the Year Awards.
(Arranger of the deal: Rabee Securities (RS))



RS is a proud supporter of the Iraq Pavilion in the Venice Biennale 2015.

Baghdad HQ

903/14/19
Karada, Baghdad, Iraq
Tel: +964 727 002 0407

Erbil

Italian Village offices
Office No: 32, Erbil, Iraq
Mob: +964 770 493 9999

Suleymani

Rand Gallery
Office No: 9, Floor:3 , Suleymani, Iraq
Mob: +964 770 651 9944

Istanbul Rep. Office

Halaskargazi cad. No: 103/7A
Osmanbey, Istanbul, Turkey
Tel: +90 212 219 2524
Mob: +90 539 456 4566

DISCLAIMER

This publication may not be reproduced, modified, or re-disseminated in whole or in part without the prior written permission of Rabee Securities. The information provided herein is of a general nature and for informational purposes only and is not intended to serve as an offer or solicitation with respect to the purchase or sale of any security, or as a recommendation to adopt any particular trading strategy. Such information is subject to change without prior notice. Although Rabee Securities obtains information from sources it considers reliable, Rabee Securities makes no representations or warranties, express or implied, as to the information's accuracy or completeness. Furthermore, such information may be incomplete or condensed. Rabee Securities, its affiliates, directors, employees, assigns, agents, and successors bear no liability for any errors or omissions in this publication or for any losses arising from the use of or reliance upon this information. This limitation on liability applies to direct, indirect, consequential, special, punitive, or other damages, as well as damages for loss of profits or business interruption. Investors shall bear all responsibility for investment decisions taken on the basis of the contents of this report. Rabee Securities strongly advises potential investors to seek financial guidance when determining whether an investment is appropriate to their needs. All estimates included in this report constitute Rabee Securities' opinion as of the date published on the report and are subject to change without notice.