

**For any inquiries, contact:**

**Research**

**Aysegul Ozge Ozgur**  
SVP, Head of Research ([aozgur@rs.iq](mailto:aozgur@rs.iq))

**Tugba Tan**

Analyst ([ttan@rs.iq](mailto:ttan@rs.iq))

**Ahmed Abdul - Ameer**

Associate ([aameer@rs.iq](mailto:aameer@rs.iq))

[research@rs.iq](mailto:research@rs.iq)

**Trading**

[traders@rs.iq](mailto:traders@rs.iq)  
Address: 903/14/19  
Karada, Baghdad-Iraq  
Tel: +964 (0) 727 002 0407  
[info@rs.iq](mailto:info@rs.iq)

**RS Website: RS.IQ**

**RS Bloomberg page: <RSIQ>**

**Closing prices for the shares traded on the ISX are now available on Bloomberg.**

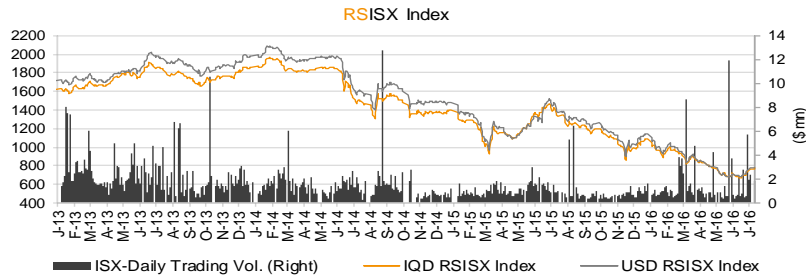
**DISCLAIMER**

This publication may not be reproduced, modified, or re-disseminated in whole or in part without the prior written permission of Rabee Securities. The information provided herein is of a general nature and for informational purposes only and is not intended to serve as an offer or solicitation with respect to the purchase or sale of any security, or as a recommendation to adopt any particular trading strategy. Such information is subject to change without prior notice. Although Rabee Securities obtains information from sources it considers reliable, Rabee Securities makes no representations or warranties, express or implied, as to the information's accuracy or completeness. Furthermore, such information may be incomplete or condensed. Rabee Securities, its affiliates, directors, employees, agents, and successors bear no liability for any errors or omissions in this publication or for any losses arising from the use of or reliance upon this information. This limitation on liability applies to direct, indirect, consequential, special, punitive, or other damages, as well as damages for loss of profits or business interruption. Investors shall bear all responsibility for investment decisions taken on the basis of the contents of this report. Rabee Securities strongly advises potential investors to seek financial guidance when determining whether an investment is appropriate to their needs. All estimates included in this report constitute Rabee Securities' opinion as of the date published on the report and are subject to change without notice.

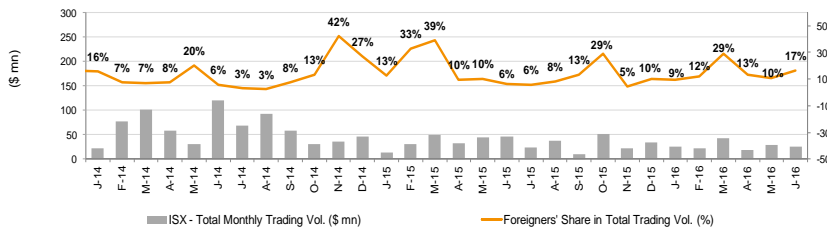
# Weekly Bulletin

**Table (1.0): Weekly Value Traded**

**IQD4,207,018,000**



**Table (1.1): ISX - Total Monthly Trading Vol. (\$ mn) & Foreigners' Share in Total T. Vol. (%)**



**Table (1.2): Best Performers - Weekly**

Code	Price (IQD)	Price Chg/w
HTVM	4.650	16.3%
BIME	0.430	10.3%
SMRI	2.400	8.6%
BBOB	0.900	7.1%
BROI	0.520	6.1%

**Table (1.3): Worst Performers - Weekly**

Code	Price (IQD)	Price Chg/w
BBAY	0.200	-9.1%
BKUI	1.000	-8.3%
BIBI	0.460	-8.0%
SNUC	0.340	-5.6%
BMFI	0.190	-5.0%

**Table (1.4): RSISX Index Vs. Neighbour Market S.E.**

Index	Index Close	Chg. /w	Chg. /YTD
RSISX IND-IQD	774	2.0%	-29.0%
EGYPT	7,586	5.6%	8.3%
KUWAIT	5,391	0.0%	-4.0%
SAUDI	6,662	2.5%	-3.6%
MUSCAT	5,860	0.8%	8.4%
QATAR	10,429	4.5%	0.0%
DUBAI	3,472	3.0%	10.2%
ABUDHABI	4,577	0.0%	6.3%
BAHRAIN	1,173	2.6%	-3.5%
TURKEY	82,825	5.7%	15.5%
IRAN	73,763	-0.2%	19.6%

**Table (1.5): Top 5 Traded Vol. - w**

Code	Price IQD	Trad.Vol./w IQD	Trad.Vol./w \$mn
BUND	0.230	2.3	1.8
BSUC	0.900	0.4	0.3
BBOB	0.900	0.4	0.3
BIME	0.430	0.2	0.2
BGUC	0.390	0.2	0.1

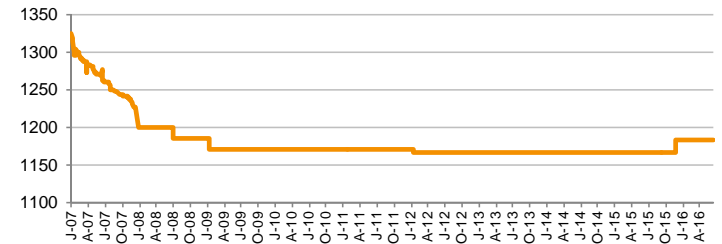
In the last session of the week (Monday), 32 companies were able to trade and 25 companies were unable to do so mainly due to their General Assembly Meeting or ISX / ISC Instructions.

CBI auction price of Iraqi Dinar remained stable at 1182 to the dollar, while exchange rate of Iraqi Dinar realized at 1275 as end of the week. Volumes for the week reached IQD4.2bn (\$3.3mn), and the numbers of shares traded reached 13.8bn.

Foreigners executed total 273 transactions this week. They executed 229 buying transactions amounted at IQD437mn (\$341K) and 44 selling transactions amounted at IQD67mn (\$52K). Thus, net purchases of foreigners reached IQD370.3mn (\$289.1K), while their share in total trading volume was 6.0%.

**Table (1.6): Iraqi Dinar Value (CBI Auction Price)**

**1USD= (1182)**



**News from Iraq**

**Politics**

- U.S. and coalition forces will use the newly retaken air base in Qayara as a staging hub, as Iraqi security forces move forward in the long-awaited battle to recapture Mosul from ISIS militants, Defense Secretary Ash Carter said Monday as he arrived in Iraq. (Bloomberg)
- Iraqi government forces advancing on the ISIS-held city of Mosul retook a village from ISIS on Tuesday and linked up along the Tigris River with army units pushing from a separate direction, Defense Minister Khalid al-Obeidi said. (Reuters)

**Economics**

- The Executive Board of the International Monetary Fund (IMF) approved a three-year Stand-By Arrangement (SBA) for Iraq for SDR 3.831bn (about \$5.34bn, or 230% of quota) to support the government's economic reform program. The Board's approval enables the disbursement of SDR 455mn (about \$634mn). In July 2015, Iraq received disbursement under the Rapid Financing Instrument equivalent to SDR 891.3mn (about \$1.24bn at the time of approval). (IMF)
- The Kurdistan Regional Government (KRG) received more than \$479mn for oil exports through the KRG-Ceyhan crude oil pipeline in June, the Ministry of Natural Resources (MNR) said. (NRT TV)

**ISX – Company Announcements**

- Al-Harir for Money Transfer (MTAH) will hold its AGM\* on Aug. 6, 2016 to discuss and approve 2015 annual financial results. ISX will suspend the trading of MTAH starting on Aug. 2, 2016.
- Iraqi Islamic Bank (BIIB) will hold its AGM\* on Jul. 28, 2016 to discuss and approve 2015 annual financial results, distributing dividends and electing the remaining members of the shariah board. ISX will suspend the trading of BIIB starting on Jul. 25, 2016.
- Ashur International Bank (BASH) will hold its AGM\* on Jul. 18, 2016 to discuss and approve 2015 annual financial results and distributing IQD14.4bn cash dividend (IQD0.058 dividend per share) from 2015 profit. ISX suspended the trading of BASH starting on Jul. 13, 2016.
- Investment Bank of Iraq (BIBI) resumed trading on Jul. 13, 2016 after discussing and approving 2015 annual financial results.
- Two cross transactions occurred on 10.1bn shares of United Bank (BUND) on Jul. 11 and 13, 2016 which represent 3.3% of BUND capital.
- The following companies were suspended from trading starting on Jul. 13, 2016 for not fulfilling ISC requirement to disclose 3M16 financial results: 1) The following companies/banks have already been suspended from trading: Economy Bank for Investment (BEFI), Iraqia for General Transportation (SIGT), Modern Paint Industries (IMPI), Al-Muhej Money Transfer (MTAM), 2) The following companies/banks are operating in danger zones: Ashour Hotel (HASH), Tourist Village of Mosul Dam (HTVM), Al-Mosul for Funfair (SMOF), Fallujah for Construction Materials (IFCM), National Household Furniture Industry (IHFI), Al-Khazer for Construction Materials (IKHC), Modern Construction Materials Industry (IMCM), 3) Modern Chemical Industries (IMCI), The Light Industries (ITLI), Motmn Money Transfer (MTMT), Al-Noor for Money Transfer (MTNN), Al-Wael for Money Transfer (MTWA), Iraqi Land Transport (SILT), Asia Cell (TASC), Al-Khatem Telecoms (TZNI), Al-Khair Financial Investment (VKHF).
- Iraqi Agricultural Products (AIRP) will hold its AGM\* on Jul. 17, 2016 to discuss and approve 2015 annual financial results, distributing IQD180mn dividends (IQD0.5 dividend per share) and estimating the book value of the damages and theft from 2003. ISX suspended the trading of AIRP starting on Jul. 12, 2016.
- National for Tourist Investment (HNTI) held its AGM\* on Jul. 13, 2016 to discuss and approve 2015 annual financial results, distributing cash dividend, adding real estate investments to company functions, selling the Babylon Land, the feasibility study of company HQ and liquidating capital investments in unproductive joint stock companies. ISX suspended the trading of HNTI starting on Jul. 11, 2016.

**Table (2.0): Dividend Distributions by ISX Listed Companies (2014-2015)**

Company Name	ISX Code	Ex-dividend date	Ex-dividend date closing share price (IQD per share)	Dividend (IQD per share)	Dividend Yield (%)
Iraqi Agricultural Products	AIRP	11-Jun-15	9.72	0.500	5.1%
		7-Aug-14	13.60	0.500	3.7%
Iraqi for Seed Production	AISP	29-Mar-15	8.30	0.600	7.2%
		6-Mar-14	8.25	0.500	6.1%
Middle East for Prod.- Fish	AMEF	8-Jul-15	7.36	0.250	3.4%
		16-Oct-14	8.58	0.200	2.3%
Ashur Bank	BASH	5-Jul-15	0.60	0.039	6.5%
		24-Jun-14	0.86	0.050	5.9%
Bank of Baghdad	BBOB	21-Jun-15	1.58	0.080	5.1%
		15-Jul-14	1.45	0.110	7.6%
Commercial Bank	BCOI	2-Dec-15	0.45	0.033	7.3%
		29-Dec-14	0.66	0.037	5.6%
Gulf Commercial Bank	BGUC	25-Jun-15	0.95	0.110	11.6%
Investment Bank	BIBI	27-Aug-15	0.81	0.080	9.9%
		27-Aug-14	1.00	0.102	10.2%
Islamic Bank	BIIB	3-Jul-14	1.07	0.090	8.4%
Iraqi Middle East Bank	BIME	10-Jul-14	0.98	0.100	10.2%
Al-Mansour Bank	BMNS	3-Mar-16	0.87	0.060	6.9%
		15-Mar-15	0.86	0.050	5.8%
		17-Feb-14	1.85	0.060	3.2%
National Islami Bank	BNAI	22-Jun-15	1.20	0.100	8.3%
National Bank	BNOI	5-Jul-15	0.81	0.020	2.5%
		16-Jun-14	0.77	0.040	5.2%
Trans Iraq Bank for Investment	BTRI	14-Mar-16	0.70	0.030	4.3%
United Bank	BUND	29-Nov-15	0.42	0.020	4.8%
		10-Dec-14	0.77	0.090	11.7%
Baghdad Hotel	HBAG	10-Sep-15	7.65	0.100	1.3%
National for Tourist Invest.	HNTI	4-Sep-14	21.00	0.166	0.8%
Palastine Hotel	HPAL	13-Dec-15	9.45	0.400	4.2%
Baghdad Soft Drinks	IBSD	11-Jun-14	2.97	0.050	1.7%
Iraqi For Tufted Carpets	IITC	2-Jun-15	4.05	0.250	6.2%
		5-Jun-14	4.25	0.250	5.9%
Al-Mansour Pharma. Ind.	IMAP	28-May-15	0.73	0.040	5.5%
		8-May-14	0.83	0.070	8.4%
Modern Chemical Industries(NR)	IMCI	23-Apr-15	95.00	0.500	0.5%
		12-Jun-14	39.80	0.500	1.3%
Baghdad Passengers Transport	SBPT	2-Nov-15	16.80	0.400	2.4%
Iraqi Land Transport	SILT	27-Jan-14	2.27	0.100	4.4%
Asiacell Communications PJSC	TASC	15-May-14	19.00	1.500	7.9%
Al-Khatem Telecom	TZNI	15-May-16	3.05	0.118	3.9%

Note: According to Iraqi securities rules, the ex-date is the last trading session before the Annual General Assembly Meeting (AGM). Shareholders who own the shares before or at the market close on the ex-date have the right to receive dividend and/or bonus shares and participate in the rights issue at the book value. We calculate dividend yields by dividing dividend per share to the closing price before the AGM.

**Table (2.1): Iraq Stock Exchange (ISX) Dividend Yields**

Iraq Stock Exchange (ISX) - Dividend Yields	2013	2014	12 month trailing
Average Dividend Yield (%) of All ISX Stocks	0.7%	1.2%	0.8%
Average Dividend Yield (%) of Non-Zero Dividend Yields of ISX Stocks	5.8%	6.4%	5.5%
Average Dividend Yield (%) of All Top-20 ISX Stocks (by Mcap)	1.0%	3.8%	2.6%
Average Dividend Yield (%) of Non-Zero Dividend Yields of Top-20 ISX stocks	6.7%	7.6%	6.5%

Note: While calculating the dividend yields for the ISX for different periods, we grouped the ISX listed companies based on the date when the shares resumed trading following the dividend distribution decision taken in the AGM.

**Table (2.2): Financial Statement Announcements (this week)**

Sector / Company Name	ISX Code	Profit (Loss) Before Tax (IQD '000)			Profit (Loss) Before Tax (\$)		
		6M15	6M16	Y/Y Change (%)	6M15	6M16	Y/Y Change (%)
<b>Banking Sector</b>							
Commercial Bank of Iraq	BCOI	4,957,257	3,555,866	-28%	3,906,262	2,787,395	-29%
<b>Industry Sector</b>							
Baghdad Soft Drinks	IBSD	12,060,042	15,700,034	30%	9,503,175	12,307,044	30%
Average IQD/US\$**					1,269	1,276	1%
Sector / Company Name	ISX Code	Profit (Loss) Before Tax (IQD '000)			Profit (Loss) Before Tax (\$)		
		3M15	3M16	Y/Y Change (%)	3M15	3M16	Y/Y Change (%)
<b>Industry Sector</b>							
Al -Hilal Industries	IHLI	-830,065	-486,339	-	-673,612	-385,985	-
Average IQD/US\$**					1,232	1,260	2%
Sector / Company Name	ISX Code	Profit (Loss) Before Tax (IQD '000)			Profit (Loss) Before Tax (\$)		
		FY14	FY15	Y/Y Change (%)	FY14	FY15	Y/Y Change (%)
<b>Banking Sector</b>							
Mosul Bank	BMFI*	2,170,701	-332,105	-	1,788,057	-264,650	-
Union Bank of Iraq	BUOI*	18,635,553	273,610	-99%	15,350,538	218,037	-99%
<b>Hotel&amp;Tourism Sector</b>							
Baghdad Hotel	HBAG*	1,211,603	1,825,275	51%	998,026	1,454,540	46%
<b>Services Sector</b>							
Baghdad Passengers Transport	SBPT*	237,616	863,338	263%	195,730	687,984	251%
<b>Agriculture Sector</b>							
Iraqi Agr. Products Mark. Meat	AIPM*	174,160	286,066	64%	143,460	227,962	59%
<b>Money Transfer Sector</b>							
Average IQD/US\$**					1,214	1,255	3%

Source: Iraq Stock Exchange (ISX), Iraqi Securities Commission (ISC), Rabee Securities (RS)

\* According to audited financial results. (Other financial results are based on unaudited year-end results).

\*\* We calculate average IQD/US\$ by calculating the average market price of IQD.

Note: Follow Rabee Securities (RS) on Twitter, join Facebook and LinkedIn groups.



Table (1.7): Performance of Traded Shares

Code	Paid-in Capital (IQD mn)		Closing Price (IQD)	Market Cap (IQD mn)		Weekly Chg (%)	YTD Chg (%)	Wk. Turnover (IQD'000)	Last Fin.*	P/E				P/BV				Profit Before Tax (IQD mn)				BV (IQD mn)				Note	
	(\$ mn)			(\$ mn)	(\$ mn)					FY12	FY13	FY14	Last*	FY12	FY13	FY14	Last*	FY12	FY13	FY14	Last*	FY12	FY13	FY14	Last*		
<b>Telecom Sector</b>																											
Asiacell Communications PJSC	TASC	310,000	241.2	4.36	1,351,600	1,051.8	-	-39.1%	0	9M15	-	8.6	10.2	12.5	-	2.6	1.9	0.7	662,170	580,505	344,709	51,066	1,896,231	1,936,712	1,876,403	1,927,469	Suspend/ISC
Al Khatem Telecom	TZNI	1,829,783	1,424.0	2.93	5,366,753	4,176.5	-	-9.8%	0	9M15	-	-	-	35.5	-	-	-	2.4	-	-	299,659	142,003	-	2,102,044	2,401,703	2,271,919	Suspend/ISC
<b>Total</b>		<b>2,139,783</b>	<b>1,665</b>		<b>6,718,353</b>	<b>5,228.3</b>			<b>0</b>													<b>1,896,231</b>	<b>4,038,756</b>	<b>4,278,106</b>	<b>4,199,388</b>		
<b>Banking Sector</b>																											
Ashur International Bank	BASH	250,000	194.6	0.30	75,000	58.4	-	-30.2%	750	3M16	8.4	9.9	24.1	10.5	0.8	0.7	0.9	0.3	19,796	19,186	13,367	2,435	170,524	230,926	269,274	279,099	-
Babylon Bank	BBAY	250,000	194.6	0.20	50,000	38.9	-9.1%	-31.0%	23,356	3M16	23.3	29.5	14.4	8.5	1.0	0.7	0.4	0.2	5,877	4,901	5,744	1,419	111,969	160,932	190,145	237,711	-
Bank of Baghdad	BBOB	250,000	194.6	0.90	225,000	175.1	7.1%	-23.1%	357,925	3M16	12.6	16.1	13.9	-	1.5	1.8	1.3	0.8	29,638	38,797	32,847	6,200	207,253	291,262	292,419	274,389	-
Commercial Bank of Iraq	BCOI	250,000	194.6	0.42	105,000	81.7	-	2.4%	73,569	6M16	9.6	15.5	17.9	17.1	0.9	0.7	0.6	0.4	14,310	10,689	10,462	3,556	143,200	196,579	284,385	277,566	-
Dijlah & Furat Bank	BDFD	112,000	87.2	0.25	28,000	21.8	-	-2.2%	0	3M16	6.0	16.8	167.6	0.6	0.4	0.8	1.4	0.2	8,390	6,440	1,138	685	115,418	120,638	118,239	144,527	-
Dar Es Salaam Inv. Bank***	BDSI	250,000	194.6	0.15	37,500	29.2	-	-44.4%	1,203	3M16	19.6	10.2	11.8	19.8	2.5	1.0	0.8	0.2	19,158	19,543	13,655	-164	127,088	168,881	180,480	188,855	-
Economy Bank	BEFI	250,000	194.6	0.72	180,000	140.1	-	-	0	3M14	6.4	33.0	-	23.3	1.2	0.9	-	0.8	32,188	7,385	-	5,143	138,692	216,051	-	230,938	Suspend/ISC
Elaf Islamic Bank	BELF	250,000	194.6	0.27	67,500	52.5	-	-32.5%	543	3M16	12.4	15.1	25.6	-	1.0	0.7	0.8	0.3	12,663	9,317	6,739	319	133,382	173,248	178,974	255,032	-
Gulf Commercial Bank	BGLUC	300,000	233.5	0.39	117,000	91.1	-	-23.5%	167,084	3M16	4.4	6.1	7.5	62.8	0.9	0.9	0.8	0.4	36,343	56,027	42,753	-1,041	149,088	303,984	345,974	324,333	-
Investment Bank of Iraq	BIBI	250,000	194.6	0.46	115,000	89.5	-8.0%	-32.4%	9,450	3M16	113.2	9.0	8.7	7.5	1.3	1.3	0.9	0.4	3,417	31,540	34,842	3,794	118,558	186,357	283,749	264,799	Suspend/GA
Iraqi Islamic Bank	BIIB	250,000	194.6	0.40	100,000	77.8	-	-21.6%	0	3M16	8.3	9.4	35.8	11.2	1.1	1.1	0.9	0.4	26,720	33,385	8,547	2,274	175,494	231,727	263,857	275,708	-
Iraqi Middle East Bank	BIME	250,000	194.6	0.43	107,500	83.7	10.3%	-15.7%	199,829	3M16	9.0	11.5	41.6	31.6	1.2	1.2	0.5	0.4	28,588	24,468	4,291	3,678	187,746	202,780	307,074	281,834	-
Kurdistan Int. Bank	BKUI	400,000	311.3	1.00	400,000	311.3	-8.3%	-31.0%	410	3M16	18.5	18.4	20.1	10.0	1.6	1.6	1.6	0.8	40,056	42,783	44,388	13,859	390,065	426,431	464,161	520,395	-
Mosul Bank	BMFI	252,500	196.5	0.19	47,975	37.3	-5.0%	-24.0%	162,338	3M16	10.6	5.7	101.2	-	0.8	0.8	0.7	0.2	19,130	45,517	2,171	769	222,430	261,119	262,940	264,175	-
Al-Mansour Bank	BMNS	250,000	194.6	0.92	230,000	179.0	-	13.6%	89,961	3M16	24.9	17.2	12.4	11.2	1.2	1.6	0.7	0.8	13,892	30,001	20,596	6,743	250,420	280,106	281,792	280,288	-
National Islamic Bank	BNAI	251,000	195.3	1.00	251,000	195.3	-	1.0%	50	3M16	-	-	-	8.6	-	-	-	0.8	32,116	39,635	37,172	5,203	177,201	285,821	285,461	306,358	-
National Bank of Iraq	BNOI	250,000	194.6	0.31	77,500	60.3	-	-43.6%	0	3M16	8.3	14.8	32.4	86.7	0.8	1.2	0.9	0.3	18,196	16,610	8,956	1,539	154,664	168,480	263,429	261,280	-
North Bank	BNOR	300,000	233.5	0.14	42,000	32.7	-	-46.2%	22,967	3M16	9.4	13.8	16.9	-	1.9	1.7	0.9	0.1	68,813	49,118	23,747	1,490	275,375	315,484	334,504	330,606	-
Credit Bank of Iraq	BROI	250,000	194.6	0.52	130,000	101.2	6.1%	-11.9%	102,667	3M16	15.4	52.2	19.5	13.9	2.0	3.1	0.9	0.4	25,280	13,746	16,016	2,156	175,547	197,079	290,171	308,855	-
Sumer Commercial Bank	BSUC	250,000	194.6	0.90	225,000	175.1	-	-5.3%	423,591	3M16	131.7	147.3	108.4	-	1.0	1.3	1.0	0.9	1,380	1,989	2,714	-825	158,735	196,801	260,508	263,162	-
Trans Iraq Bank for Investment (NR)	BTRI	264,000	205.4	0.67	176,801	137.6	-	-	0	3M16	-	-	-	25.9	-	-	-	0.6	452	2,050	-	4,711	66,261	68,380	216,510	278,136	-
United Bank	BUND	300,000	233.5	0.23	69,000	53.7	4.5%	-37.8%	2,343,334	3M16	8.7	11.7	9.8	7.5	1.5	1.0	0.7	0.2	55,818	37,059	26,334	1,349	310,265	338,833	316,915	323,066	-
Union Bank	BUOI	252,000	196.1	0.36	90,720	70.6	-	-47.8%	0	FY15	5.7	7.9	16.4	-	0.9	1.6	0.9	0.3	22,008	52,943	18,636	274	120,405	215,426	271,691	260,875	-
<b>Total</b>		<b>5,931,500</b>	<b>4,616.0</b>		<b>2,947,496</b>	<b>2,293.8</b>			<b>3,979,026</b>													<b>4,079,780</b>	<b>5,237,324</b>	<b>5,962,652</b>	<b>6,431,988</b>		
<b>Industry Sector</b>																											
Baghdad for Packing Materials	IBPM	1,080	0.8	1.35	1,458	1.1	-	-30.1%	0	3M16	-	73.1	-	-	4.1	2.6	1.7	1.5	6	40	-	-32	550	1,130	1,087	971	-
Baghdad Soft Drinks	IBSD	133,000	103.5	1.97	262,010	203.9	-	-33.0%	0	3M16	11.6	18.5	15.2	8.6	1.2	2.3	1.6	1.1	19,518	24,043	22,011	15,700	167,198	175,717	189,327	235,919	Suspend/GA
Electronic Industries	IELI	18,000	14.0	1.01	18,180	14.1	-	-	0	3M16	-	-	-	-	0.7	1.0	1.3	1.0	-1,209	-6,497	-	-202	31,692	25,249	22,706	18,725	Suspend/ISC
Fallujah for Construction Mat.	IFCM	3,120	2.4	1.51	4,711	3.7	-	-	0	9M13	49.3	-	-	87.4	3.1	-	-	1.6	209	-	-	40	2,898	-	-	2,896	Suspend/ISC
Nationality Househ. Furniture(NR)	IHFI	1,260	1.0	0.90	1,134	0.9	-	-	0	3M14	20.4	-	-	-	0.5	-	-	0.6	49	-	-	-27	1,891	-	-	1,952	Suspend/ISC
Al-Hilal Industries	IHLI	12,375	9.6	0.29	3,589	2.8	-	-27.5%	10,100	9M15	-	-	-	-	-	-	-	-	-3,634	-4,385	-4,851	-486	-3,206	-7,591	-4,441	-8,570	-
Iraqi for Carton Manufact. & Trading	IICM	7,590	5.9	0.31	2,353	1.8	-	-16.2%	0	3M16	-	-	-	-	6.4	-	-	-	-1,341	-1,693	-1,311	-95	1,074	-608	-1,910	-2,445	-
Iraqi Date Processing&Mark.***	IIDP	27,600	21.5	1.75	48,300	37.6	-	48.1%	0	3M16	21.8	-	-	-	-	1.0	1.1	2.5	1,036	-364	81	-708	-	18,709	19,347	19,539	-
Iraqi Engineering Works	IIEW	1,500	1.2	0.60	900	0.7	-	-4.8%	0	3M16	-	-	-	-	2.3	1.3	0.8	0.6	6	3	-168	-49	1,577	1,857	1,699	1,436	-
Iraqi For Tufted Carpets	IITC	500	0.4	4.50	2,250	1.8	2.3%	5.1%	225	3M16	12.6	11.2	12.7	11.4	1.2	1.0	1.0	1.1	195	199	191	82	1,934	2,006	2,060	1,991	-
Al -Khazer for Construction M.	IKHC	1,100	0.9	1.30	1,430	1.1	-	-7.8%	0	9M13	-	-	-	35.0	1.6	-	-	-	-104	-	-	88	1,298	-	-	1,298	-
AL- Kindi of Veterinary Vac.	IKLV	5,940	4.6	0.53	3,148	2.4	-3.6%	-52.3%	9,598	3M16	13.9	21.6	-	40.0	2.5	2.1	1.1	0.5	1,112	704	-257	-31	5,758	6,386	6,110	6,149	-

Source: Iraq Stock Exchange



**Table (1.9): Performance of Traded Shares**

Code	Paid-in Capital			Market Cap (IQD mn)	(\$ mn)	Weekly Chg (%)	YTD Chg (%)	Wk. Turnover (IQD/000)	Last Fin.*	P/E				P/BV				Net Profit (IQD mn)				BV (IQD mn)			Note		
	(IQD mn)	(\$ mn)	Closing Price (IQD)							FY12	FY13	FY14	Last*	FY12	FY13	FY14	Last*	FY12	FY13	FY14	Last*	FY12	FY13	FY14		Last*	
<b>Agriculture Sector</b>																											
Al-Ahliya for Agricultural Prod.	AAHP	575	0.4	1.40	805	0.6	-	23.9%	3,204	9M15	59.4	-	28.8	15.2	2.6	3.2	2.9	3.0	9	-10	22	53	206	196	218	271	-
Iraqi Agr. Prod. Mark. Meat	AIPM	5,000	3.9	2.53	12,650	9.8	5.4%	-45.6%	16,719	3M16	100.5	89.7	-	44.3	5.8	4.9	5.3	1.8	434	454	174	-22	6,518	7,124	6,729	7,184	-
Iraqi Agricultural Products	AIRP	360	0.3	7.70	2,772	2.2	-	-2.5%	0	3M16	20.8	25.6	15.8	9.3	3.1	3.9	1.6	1.0	198	220	305	-82	1,145	1,239	2,608	2,738	Suspend/GA
Iraqi for Seed Production	AISP	7,500	5.8	5.72	42,900	33.4	-	-	0	FY13	7.4	3.7	-	4.6	1.9	2.3	-	2.8	2,305	9,318	-	9,318	8,862	15,209	-	15,209	Suspend/ISC
Modern Animal & Agr. Production	AMAP	4,101	3.2	0.52	2,133	1.7	-1.9%	-3.7%	1,973	3M16	11.2	21.1	31.9	-	1.4	0.7	0.6	0.5	292	145	81	-157	2,409	4,372	4,455	4,419	-
Middle East for Prod.- Fish	AMEF	300	0.2	7.30	2,190	1.7	-	4.3%	41	9M15	31.3	35.7	15.1	17.9	3.3	2.5	1.5	1.3	182	126	182	59	1,452	1,487	1,576	1,632	-
<b>Total</b>		<b>17,836</b>	<b>13.9</b>		<b>63,450</b>	<b>49.4</b>			<b>21,937</b>														<b>20,592</b>	<b>29,628</b>	<b>15,585</b>	<b>31,453</b>	
<b>Insurance Sector</b>																											
AHliya For Insurance	NAHF	2,500	1.9	0.33	825	0.6	-	-34.0%	0	3M16	10.0	7.0	-	-	0.8	0.7	0.8	0.3	227	357	-207	-15	2,815	3,144	2,933	2,774	-
Al-Ameen for Insurance	NAME	5,000	3.9	0.50	2,500	1.9	-	-35.1%	0	3M16	7.8	6.1	10.0	12.3	0.8	1.1	1.1	0.6	268	776	501	62	2,677	3,541	3,902	4,015	-
Dar Al-Salam for Insurance	NSDA	3,509	2.7	0.94	3,298	2.6	-	-6.9%	0	3M16	20.1	20.5	16.7	-	1.3	1.5	1.2	0.7	280	363	391	10	3,838	4,199	4,499	4,967	-
Gulf Insurance&Reinsurance***	NGIR	5,000	3.9	0.34	1,700	1.3	-2.9%	-5.6%	301	3M16	26.1	41.1	58.1	-	0.9	0.6	2.0	0.9	71	31	88	-3	2,161	2,194	2,242	1,915	-
Al-Hamraa for Insurance (NR)	NHAM	5,000	3.9	0.64	3,200	2.5	-	-	0	FY15	3.3	3.3	15.1	3.4	0.8	0.6	0.9	0.5	1,202	1,228	409	498	4,311	5,425	5,748	6,974	-
<b>Total</b>		<b>21,009</b>	<b>16.3</b>		<b>11,523</b>	<b>9.0</b>			<b>301</b>														<b>15,802</b>	<b>18,504</b>	<b>19,324</b>	<b>20,645</b>	
<b>Investment Sector</b>																											
Al-Ameen Financial Inv. (NR)	VAMF	1,000	0.8	1.40	1,400	1.1	-	-12.5%	0	3M16	-	-	-	-	0.7	2.3	2.5	2.1	-71	-10	-135	-37	669	662	800	665	-
AL- Batek Investment(NR)	VBAT	1,000	0.8	0.72	720	0.6	-	-10.0%	40	3M16	26.3	51.9	-	-	0.6	0.6	0.6	0.5	41	20	-31	-10	1,505	1,430	1,417	1,371	-
Al-Khair for Financial Inv. (NR)	VKHF	7,000	5.4	0.20	1,400	1.1	-	-47.4%	0	FY15	-	-	-	-	0.3	0.4	0.4	0.2	-348	-341	-128	-96	7,077	6,736	6,608	6,512	Suspend/ISC
Bain Al-Nahrain Financial Inv.(NR)	VMES	1,000	0.8	1.00	1,000	0.8	-	-	0	3M16	2.7	189.6	-	20.6	0.7	0.9	1.0	1.0	367	6	-55	-14	1,236	1,125	1,033	1,041	-
AL-Wiaam for Financial Inv.	WWIF	2,000	1.6	0.89	1,780	1.4	-	-	0	3M16	88.0	31.1	-	-	1.4	1.4	1.3	1.0	42	113	-355	-71	2,268	2,184	1,829	1,714	-
Al-Zawraa for Financial Inv.	VZAF	1,150	0.9	0.42	483	0.4	-	-19.2%	0	3M16	-	40.7	49.6	-	-	0.9	0.6	0.4	8	33	19	-22	-	1,303	1,313	1,214	-
<b>Total</b>		<b>13,150</b>	<b>10.2</b>		<b>6,783</b>	<b>5.3</b>			<b>40</b>														<b>12,755</b>	<b>13,441</b>	<b>13,000</b>	<b>12,517</b>	
<b>Money Transfer Sector</b>																											
Al-Harir for Money Transfer(NR)	MTAH	45,000	35.0	-	-	-	-	-	0	3M16	-	-	-	-	-	-	-	-	-	49	114	242	-	15,228	15,374	45,764	-
Al-Taif Money Transfer(NR)	MTAI	38,000	29.6	2.55	96,900	75.4	-	-19.8%	0	3M16	-	-	-	139.1	-	-	-	2.1	-	186	533	359	-	25,500	38,930	46,306	-
Al Muhej Money Transfer(NR)	MTAM	15,000	11.7	-	-	-	-	-	0	9M15	-	-	-	-	-	-	-	-	-	189	46	195	-	15,230	15,272	45,425	Suspend/ISC
Al-Iraqia For Money Transfer(NR)	MTIR	100,000	77.8	1.00	100,000	77.8	-	-	0	3M16	-	-	-	-	-	-	-	2.2	-	78	275	240	-	15,133	15,367	45,922	-
Al-Manafaa Company for Money Transfer(NR)	MTMA	45,000	35.0	-	-	-	-	-	0	3M16	-	-	-	-	-	-	-	-	-	3	-35	50	-	15,018	14,983	44,986	-
Mouta for Remittance(NR)	MTMO	45,000	35.0	-	-	-	-	-	0	3M16	-	-	-	-	-	-	-	-	-	45	-58	68	-	15,207	15,149	45,237	-
Al-Motaman For Money Transfer(NR)	MTMT	100,000	77.8	1.00	100,000	77.8	-	-	0	3M16	-	-	-	-	-	-	-	1.0	-	27	-14	103	-	10,109	15,099	100,224	Suspend/ISC
Al-Nibal Al Arabia for Money Transfer (NR)	MTNI	25,000	19.5	1.00	-	-	-	-	0	3M16	-	-	-	-	-	-	-	-	-	86	69	-114	-	15,311	25,379	45,306	-
Al-Noor For Money Transfer (NR)	MTNN	45,000	35.0	-	-	-	-	-	0	FY15	-	-	-	-	-	-	-	-	-	-7	62	-104	-	10,212	20,287	45,571	Suspend/ISC
Nobles for Money Transfer(NR)	MTNO	30,000	23.3	-	-	-	-	-	0	3M16	-	-	-	-	-	-	-	-	-	343	148	65	-	10,477	20,602	45,873	-
Al-Rabita Almalia for Money Tr. (NR)	MTRA	45,000	35.0	-	-	-	-	-	0	3M16	-	-	-	-	-	-	-	-	-	19	8	110	-	15,111	15,117	45,240	-
Sama Baghdad Finance Transfer(NR)	MTSB	45,000	35.0	-	-	-	-	-	0	3M16	-	-	-	-	-	-	-	-	-	197	90	44	-	15,247	15,327	45,774	Suspend/ISC
United Arab Money Transfer(NR)	MTUA	45,000	35.0	1.00	45,000	35.0	-	-	0	3M16	-	-	-	-	-	-	-	-	-	68	140	51	-	46,050	46,169	46,108	Suspend/ISC
Al-Waeel for Money Transfer(NR)	MTWA	45,000	35.0	-	-	-	-	-	0	FY15	-	-	-	-	-	-	-	-	-	96	80	517	-	10,119	15,199	-	Suspend/ISC
<b>Total</b>		<b>668,000</b>	<b>485</b>		<b>341,900</b>	<b>266</b>			<b>0</b>														<b>0</b>	<b>233,951</b>	<b>288,254</b>	<b>647,737</b>	
<b>Grand Total</b>		<b>9,148,229</b>	<b>7,084</b>		<b>10,892,259</b>	<b>8,476</b>			<b>4,207,018</b>														<b>6,343,462</b>	<b>9,904,224</b>	<b>10,906,060</b>	<b>11,748,514</b>	

Source: Iraq Stock Exchange

\*Last Financials: The date of the most recent financial statements.

P/E (Last): While calculating P/E (Last), we divided "Current Mcap" to "trailing net profit" when the recently announced financial statements are for the interim period. For the companies which trailing profit cannot be calculated due to lack of information, we divided "Current Mcap" to "annualized YTD profit," while calculating P/E (Last). We adjusted unaudited profit before tax values by deducting 15% income tax, while calculating annualized YTD profit.

P/BV (Last): Calculated by dividing "Current Mcap" to "BV in its Last Financials".

\*\*When the original shares resume trading, we start using the number of shares that the company will reach after the capital increase with the assumption that the capital increase was reflected to the price of the shares. We use the new capital in calculating Mcap, too.

Note: "Suspend/ISC" companies are not trading due to ISC Instructions.

"Suspend/GA" companies are not trading due to General Assembly Meetings

"(NR)": These are the companies which are trading in the Non-Regular market (in compliance with Iraq Securities Commission law numbered 132/9 on 20/12/2012). These companies were moved to the secondary market (non-regular) because of the decrease in their trading volume and the number of days that these companies are being traded for. Please note, according to the Regulations of the Secondary Market, in each trading session, the average share price will be calculated for each share. The maximum increase and decrease of +/- 20% will be based on the average price in the previous session. The price should be valid during three effective trading sessions after the listing, and it will be free in the first trading session after capital increasing.

**For any inquiries, contact:**

**Research**

Aysegul Ozge Ozgur (SVP, Head of Research)

[aozgur@rs.iq](mailto:aozgur@rs.iq)

Tugba Tan (Analyst)

[ttan@rs.iq](mailto:ttan@rs.iq)

Ahmed Abdul - Ameer (Associate)

[aameer@rs.iq](mailto:aameer@rs.iq)

[research@rs.iq](mailto:research@rs.iq)

Tel: +90 212 219 2524

**Trading**

[traders@rs.iq](mailto:traders@rs.iq)

Tel: +964 727 002 0407

**Info**

[info@rs.iq](mailto:info@rs.iq)

Tel: +964 (790) 133 1492

**RS Bloomberg page: <RSIQ>**

**RS Website: RS.IQ**



Asiacell has won "EMEA Finance's Best IPO in EMEA award" in EMEA Finance's Achievement Awards 2013.

*(Arranger of the deal: Rabee Securities (RS))*



Asiacell was named the winner of the corporate finance category in the 2013 Association of Corporate Treasures Middle East Deals (ACTME) of the Year Awards.

*(Arranger of the deal: Rabee Securities (RS))*



**TMT FINANCE MIDDLE EAST & NORTH AFRICA  
2013 CONFERENCE & AWARDS WINNERS**

**EQUITY CAPITAL MARKETS DEAL OF THE YEAR -  
ASIACELL IPO ADVISED BY RABEE SECURITIES**



**RS is a proud supporter of the Iraq Pavilion  
in the Venice Biennale 2015.**

**Baghdad HQ**

903/14/19  
Karada, Baghdad, Iraq  
Tel: +964 727 002 0407

**Erbil**

Italian Village offices  
Office Number: 32, Erbil, Iraq  
Tel: +964 770 493 9999

**Suleymani**

Rand Gallery  
Office No: 9, Floor:3 , Suleymani, Iraq  
Tel: +964 770 651 9944

**Istanbul Rep. Office**

Halaskargazi cad. 103  
No: 7A Osmanbey, Istanbul, Turkey  
Tel: +90 212 219 2524  
Mob: +90 539 456 4566

**DISCLAIMER**

This publication may not be reproduced, modified, or re-disseminated in whole or in part without the prior written permission of Rabee Securities. The information provided herein is of a general nature and for informational purposes only and is not intended to serve as an offer or solicitation with respect to the purchase or sale of any security, or as a recommendation to adopt any particular trading strategy. Such information is subject to change without prior notice. Although Rabee Securities obtains information from sources it considers reliable, Rabee Securities makes no representations or warranties, express or implied, as to the information's accuracy or completeness. Furthermore, such information may be incomplete or condensed. Rabee Securities, its affiliates, directors, employees, assigns, agents, and successors bear no liability for any errors or omissions in this publication or for any losses arising from the use of or reliance upon this information. This limitation on liability applies to direct, indirect, consequential, special, punitive, or other damages, as well as damages for loss of profits or business interruption. Investors shall bear all responsibility for investment decisions taken on the basis of the contents of this report. Rabee Securities strongly advises potential investors to seek financial guidance when determining whether an investment is appropriate to their needs. All estimates included in this report constitute Rabee Securities' opinion as of the date published on the report and are subject to change without notice.